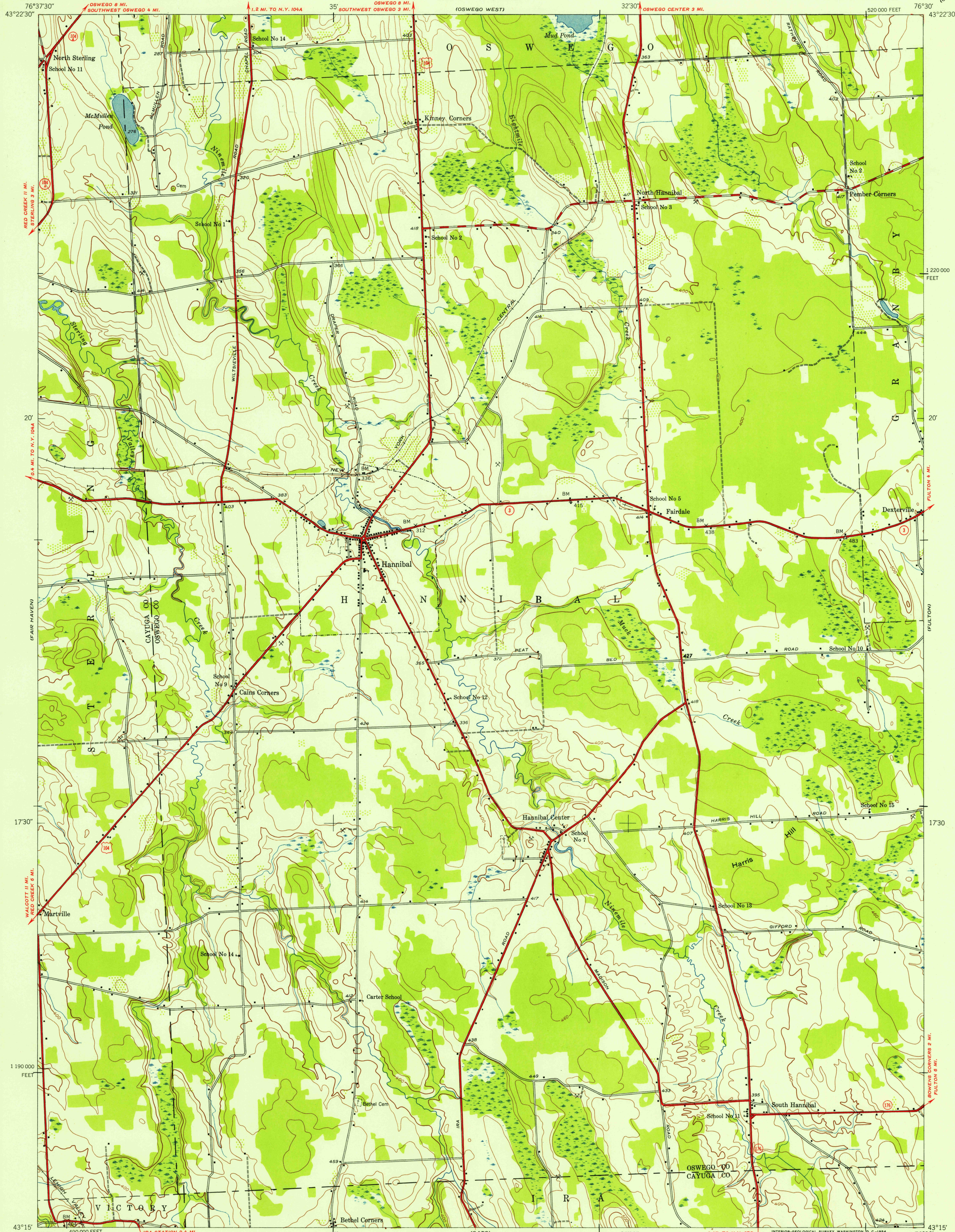


UNITED STATES
DEPARTMENT OF THE INTERIOR
GEOLOGICAL SURVEY

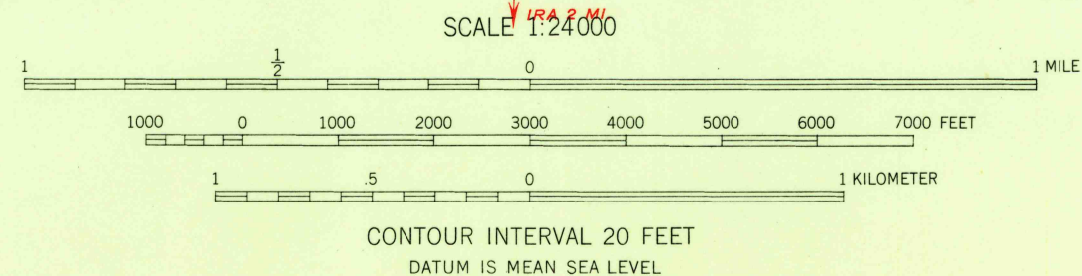
UNITED STATES
DEPARTMENT OF THE ARMY
CORPS OF ENGINEERS

HANNIBAL QUADRANGLE
NEW YORK
7.5 MINUTE SERIES (TOPOGRAPHIC)
SE/4 OSWEGO 15' QUADRANGLE



Mapped by the Army Map Service
Published for civil use by the Geological Survey
Control by USC&GS and TVA
Topography from aerial photographs by multiplex methods
Aerial photographs taken 1942
Polyconic projection. 1927 North American datum
10,000-foot grid based on New York coordinate system,
central zone

11°
TRUE NORTH
MAGNETIC NORTH
APPROXIMATE MEAN
DECLINATION, 1943



ROAD CLASSIFICATION
Heavy-duty 4 LANE 16 LANE Light-duty
Medium-duty 4 LANE 16 LANE Unimproved dirt
U. S. Route State Route

USCS
Historical File
Topographic Division

HANNIBAL, N. Y.
SE/4 OSWEGO 15' QUADRANGLE
N4315-W7630/7.5

1943

MAR 8 1954

3210