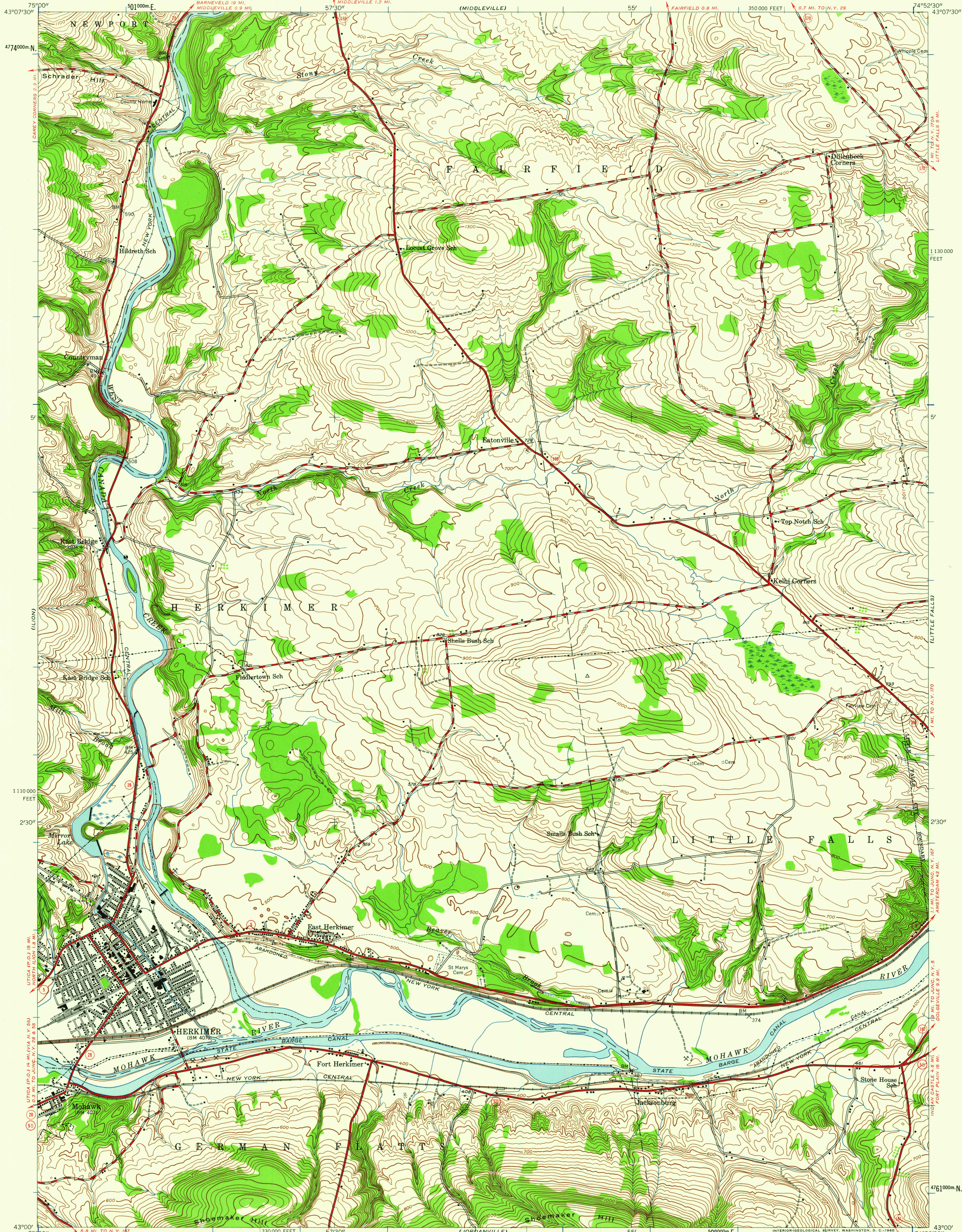


UNITED STATES  
DEPARTMENT OF THE INTERIOR  
GEOLOGICAL SURVEY

UNITED STATES  
DEPARTMENT OF THE ARMY  
CORPS OF ENGINEERS

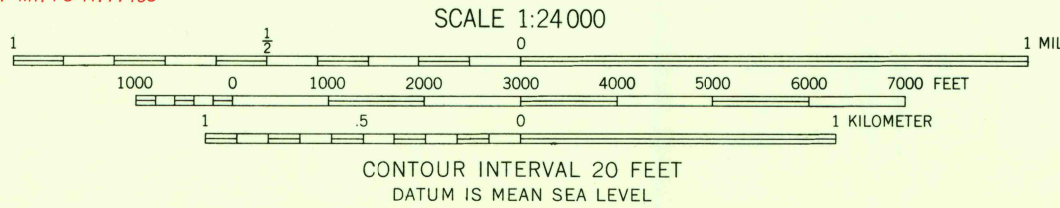
HERKIMER QUADRANGLE  
NEW YORK—HERKIMER CO.  
7.5 MINUTE SERIES (TOPOGRAPHIC)  
SW 1/4 LITTLE FALLS 15' QUADRANGLE



Mapped by the Army Map Service  
Published for civil use by the Geological Survey  
Control by USGS, USC&GS, and TVA

Topography from aerial photographs by photogrammetric methods  
Aerial photographs taken 1942. Field check 1943  
Polyconic projection. 1927 North American datum  
10,000-foot grid based on New York coordinate system, east zone  
1000-meter Transverse Mercator grid ticks,  
zone 18, shown in blue

12°  
TRUE NORTH  
MAGNETIC NORTH  
APPROXIMATE MEAN  
DECLINATION, 1943



USGS  
Historical File  
Topographic Division

ROAD CLASSIFICATION  
Heavy-duty ——— Light-duty ———  
Medium-duty ——— Unimproved dirt ———  
State Route



HERKIMER, N. Y.  
SW 1/4 LITTLE FALLS 15' QUADRANGLE  
N 4300—W 7452.5/7.5

1943

THIS MAP COMPLIES WITH NATIONAL MAP ACCURACY STANDARDS  
FOR SALE BY U. S. GEOLOGICAL SURVEY, WASHINGTON 25, D. C.  
A FOLDER DESCRIBING TOPOGRAPHIC MAPS AND SYMBOLS IS AVAILABLE ON REQUEST

AUG 29 1960

3055