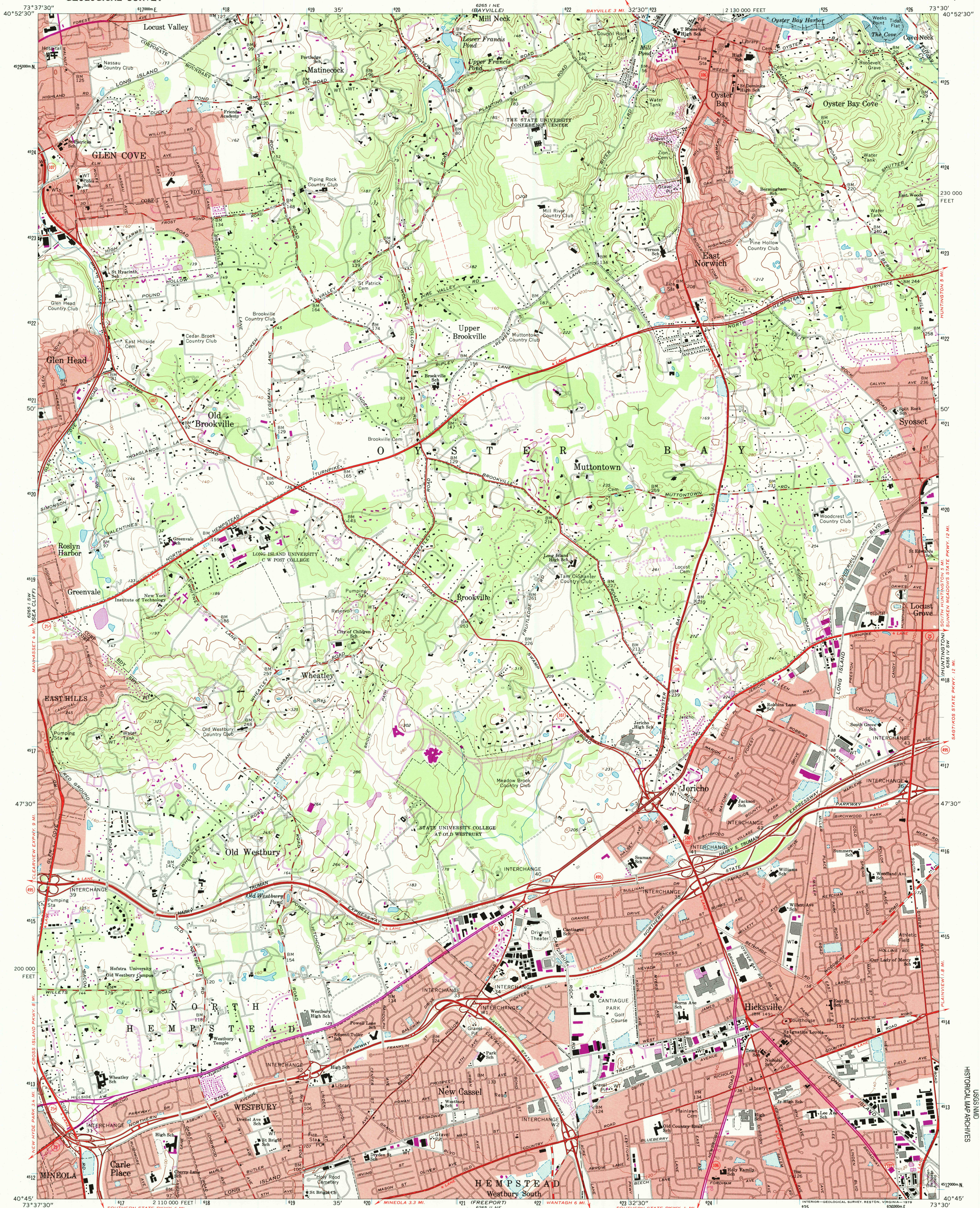


UNITED STATES  
DEPARTMENT OF THE INTERIOR  
GEOLOGICAL SURVEY

HICKSVILLE QUADRANGLE  
NEW YORK—NASSAU CO.  
7.5 MINUTE SERIES (TOPOGRAPHIC)



Map by the Army Map Service  
Edited and published by the Geological Survey  
Revised by the Geological Survey in cooperation  
with New York Department of Transportation  
Control by USGS, USCGS, and Nassau County  
Planimetry by photogrammetric methods from aerial  
photographs taken 1940. Topography by plane table surveys 1943  
Revised from aerial photographs taken 1966. Field checked 1967  
Selected hydrographic data compiled from USCGS Chart 224 (1966)  
This information is not intended for navigational purposes  
Polyconic projection. 1927 North American datum  
10,000-foot grid based on New York coordinate system,  
Long Island zone  
1000-meter Universal Transverse Mercator grid ticks,  
zone 18, shown in blue  
Fine red dashed lines indicate selected fence and field lines where  
generally visible on aerial photographs. This information is unchecked  
Red tint indicates areas in which only landmark buildings are shown

SCALE 1:24,000  
CONTOUR INTERVAL 20 FEET  
NATIONAL GEODETIC VERTICAL DATUM OF 1929  
DEPTH CURVES AND SOUNDINGS IN FEET—DATUM IS MEAN LOW WATER  
THE RELATIONSHIP BETWEEN THE TWO DATUMS IS VARIABLE  
SHORELINE SHOWN REPRESENTS THE APPROXIMATE LINE OF MEAN HIGH WATER  
THE MEAN RANGE OF TIDE IS APPROXIMATELY 7.3 FEET  
THIS MAP COMPLIES WITH NATIONAL MAP ACCURACY STANDARDS  
FOR SALE BY U.S. GEOLOGICAL SURVEY  
DENVER, COLORADO 80225, OR RESTON, VIRGINIA 22092  
A FOLDER DESCRIBING TOPOGRAPHIC MAPS AND SYMBOLS IS AVAILABLE ON REQUEST

Revisions shown in purple compiled by the Geological Survey from aerial  
photographs taken 1977 and other source data. This information  
not field checked. Map edited 1979

ROAD CLASSIFICATION  
Heavy-duty ——— Light-duty ———  
Medium-duty ——— Unimproved dirt ———  
State Route ———

HICKSVILLE, N.Y.

N4045—W7330/7.5

1967  
PHOTOREVISED 1979  
AMS 6265 1 SE—SERIES V821

RECEIVED  
DEC 3 1 1998

USGS NAD  
HISTORICAL MAP ARCHIVES

5-59411-109-0-NB31