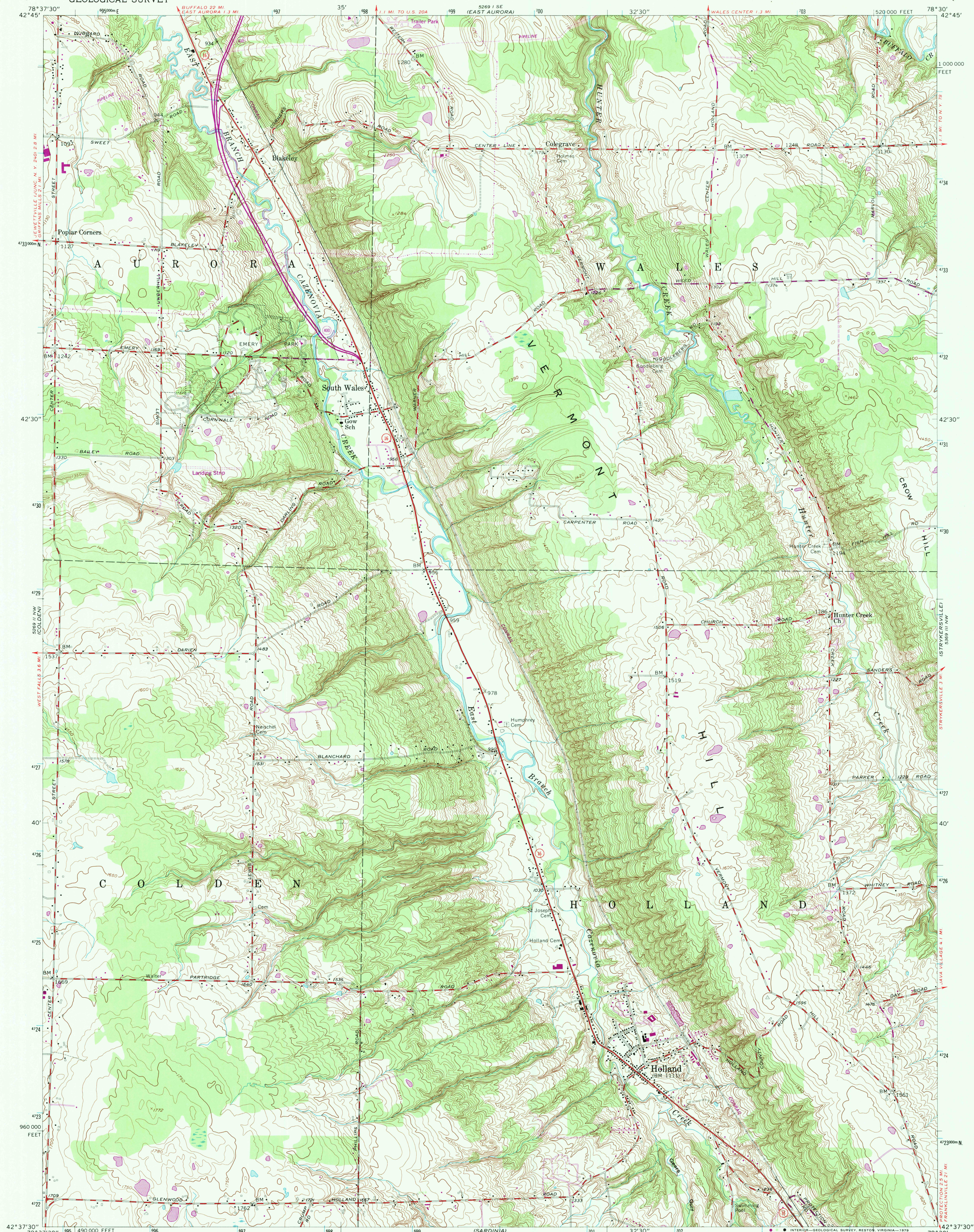


UNITED STATES
DEPARTMENT OF THE INTERIOR
GEOLOGICAL SURVEY

HOLLAND QUADRANGLE
NEW YORK-ERIE CO.
7.5 MINUTE SERIES (TOPOGRAPHIC)



Maped, edited, and published by the Geological Survey

Control by USGS and USC&GS

Topography from aerial photographs by stereoplotograph

Aerial photographs taken 1952. Field check 1955

Polyconic projection. 1927 North American datum

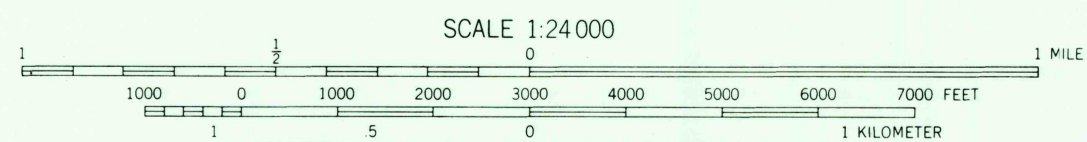
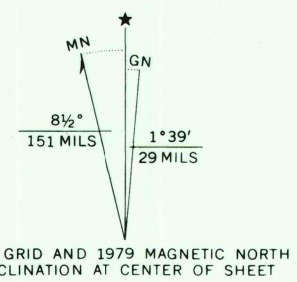
10,000-foot grid based on New York coordinate system, west zone

Unchecked elevations are shown in brown

1000-meter Universal Transverse Mercator grid ticks, zone 17, shown in blue

Revisions shown in purple and woodland compiled from aerial photographs taken 1976 and other source data

This information not field checked. Map edited 1979



CONTOUR INTERVAL 10 FEET
NATIONAL GEODETIC VERTICAL DATUM OF 1929

THIS MAP COMPLIES WITH NATIONAL MAP ACCURACY STANDARDS
FOR SALE BY U.S. GEOLOGICAL SURVEY, RESTON VIRGINIA 22092
A FOLDER DESCRIBING TOPOGRAPHIC MAPS AND SYMBOLS IS AVAILABLE ON REQUEST



ROAD CLASSIFICATION	
Heavy-duty	Light-duty
Medium-duty	Unimproved dirt
U. S. Route	State Route

HOLLAND, N. Y.

N4237.5—W7830/7.5

1955

PHOTOREVISED 1979

AMS 5269 II NE—SERIES W821

AUG 21 1980

ENTER TO 1
USGS AND HISTORICAL MAP ARCHIVES