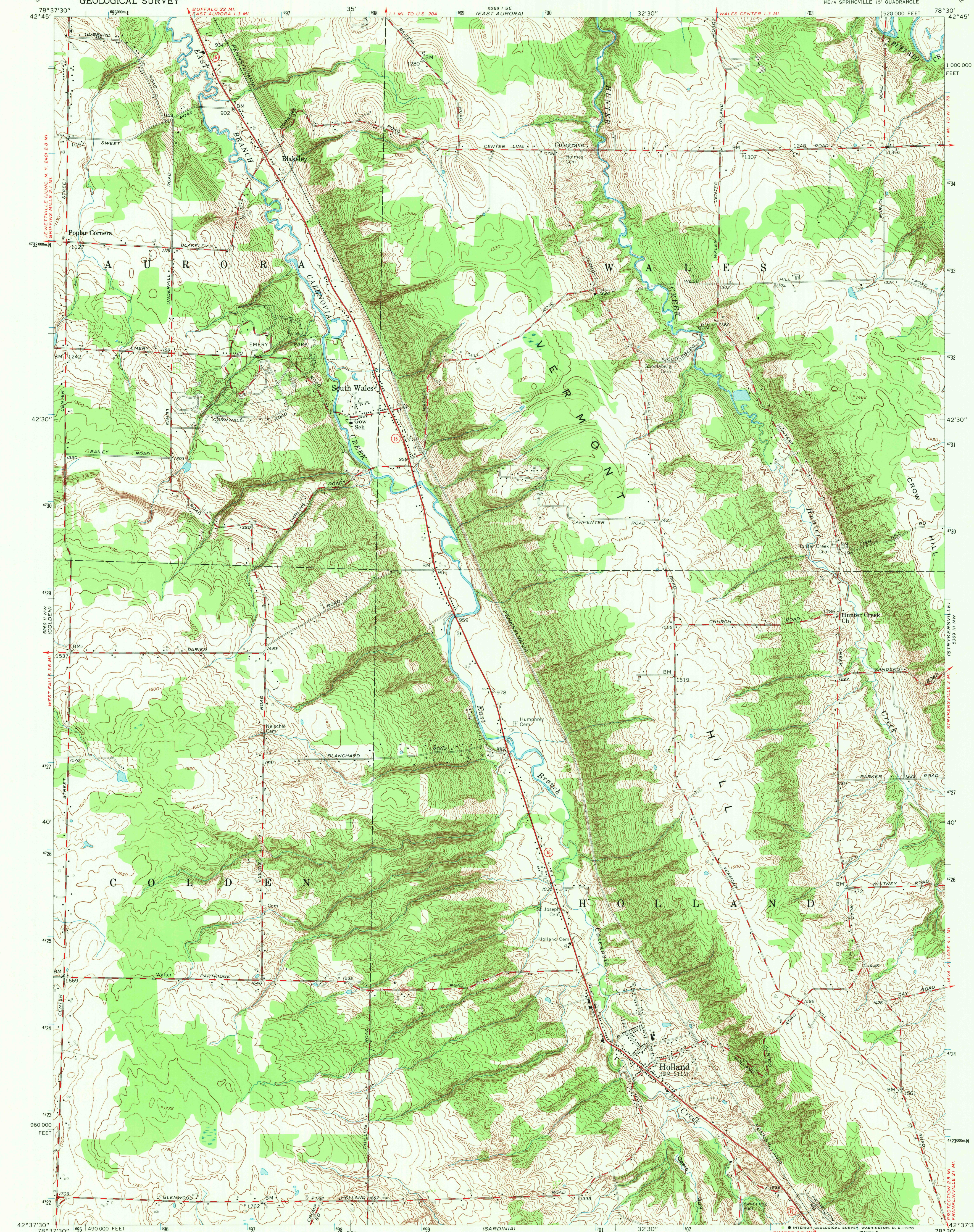
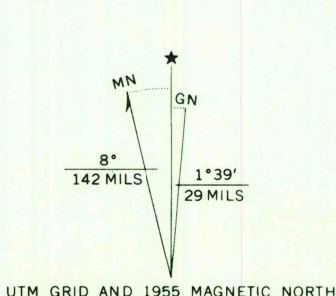


UNITED STATES
DEPARTMENT OF THE INTERIOR
GEOLOGICAL SURVEY

HOLLAND QUADRANGLE
NEW YORK-ERIE CO.
7.5 MINUTE SERIES (TOPOGRAPHIC)
NE 4 SPRINGVILLE 15' QUADRANGLE



Mapped, edited, and published by the Geological Survey
Control by USGS and USC&GS
Topography from aerial photographs by stereoplanigraph
Aerial photographs taken 1952. Field check 1955
Polyconic projection. 1927 North American datum
10,000-foot grid based on New York coordinate system,
west zone
Unchecked elevations are shown in brown
1000-meter Universal Transverse Mercator grid ticks,
zone 17, shown in blue



CONTOUR INTERVAL 10 FEET
DATUM IS MEAN SEA LEVEL

USGS
Historical File
Topographic Division



ROAD CLASSIFICATION
Heavy-duty ——— Light-duty ———
Medium-duty ——— Unimproved dirt ———
U. S. Route ——— State Route ———

U.S.G.S.
FILE COPY
TOPOGRAPHIC DIVISION

HOLLAND, N. Y.
NE 4 SPRINGVILLE 15' QUADRANGLE
N4237.5-W7830/7.5
1955
AMS 5269 II NE-SERIES V821

THIS MAP COMPLIES WITH NATIONAL MAP ACCURACY STANDARDS
FOR SALE BY U. S. GEOLOGICAL SURVEY, WASHINGTON, D. C. 20242
A FOLDER DESCRIBING TOPOGRAPHIC MAPS AND SYMBOLS IS AVAILABLE ON REQUEST

2815
067 2 4 1969