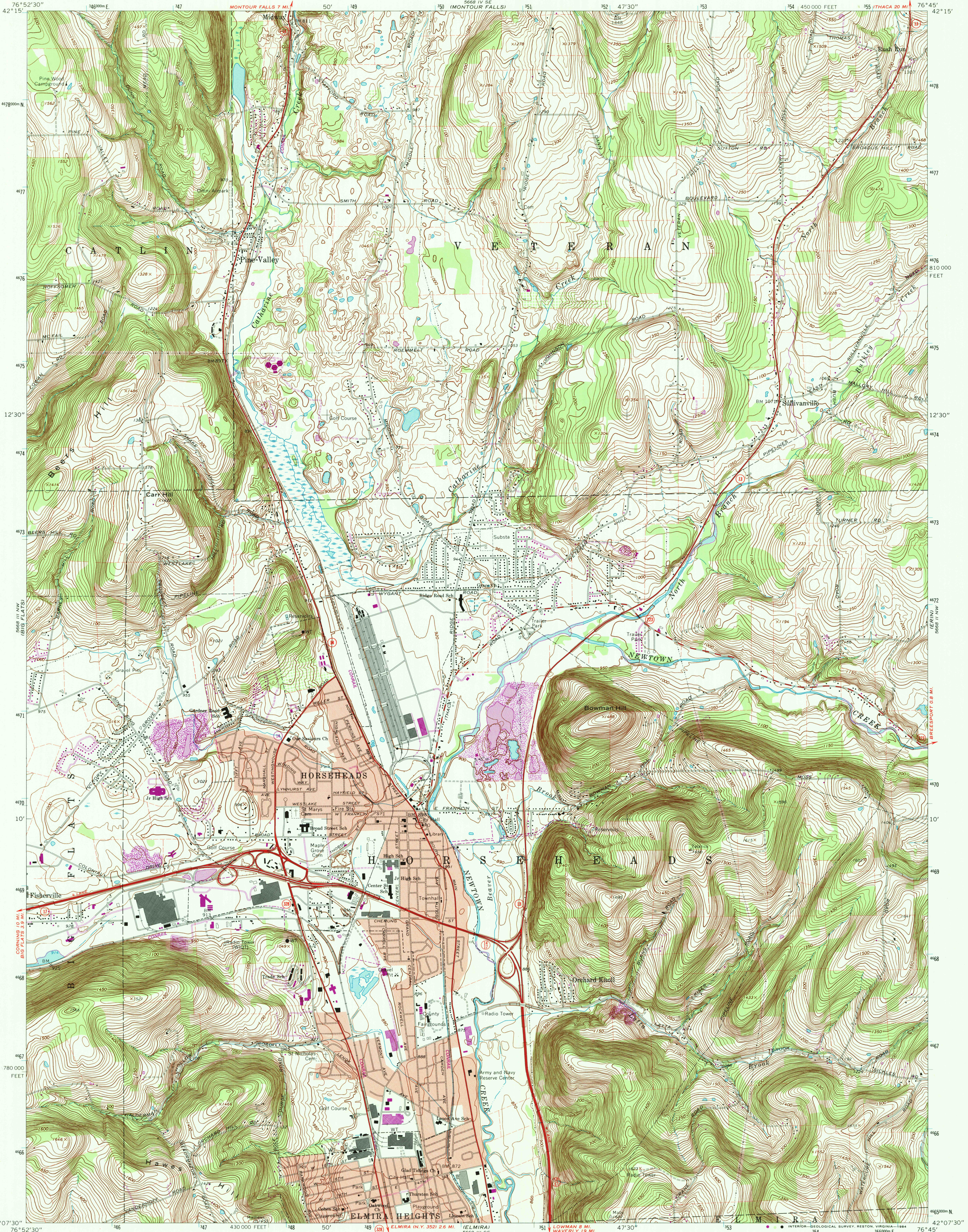


UNITED STATES
DEPARTMENT OF THE INTERIOR
GEOLOGICAL SURVEY

HORSEHEADS QUADRANGLE
NEW YORK-CHEMUNG CO.
7.5 MINUTE SERIES (TOPOGRAPHIC)

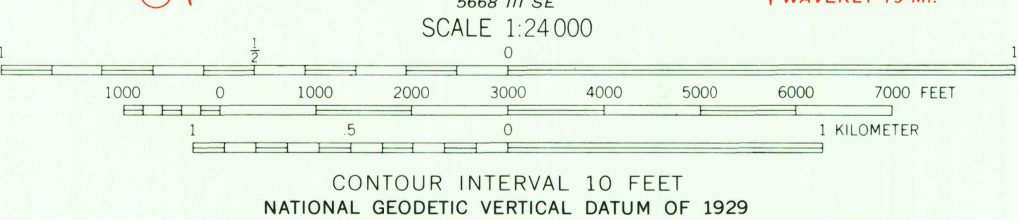
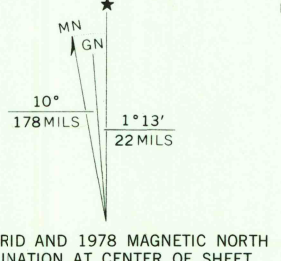


Mapped, edited, and published by the Geological Survey
Revised in cooperation with New York Department of Transportation
Control by USGS and USCGS

Topography by photogrammetric methods from aerial photographs
taken 1948. Field checked 1953. Revised from aerial
photographs taken 1968. Field checked 1969

Polyconic projection. 1927 North American datum
10,000-foot grid based on New York coordinate system, central zone
1000-meter Universal Transverse Mercator grid ticks, zone 18,
shown in blue

Fine red dashed lines indicate selected fence and field lines where
generally visible on aerial photographs. This information is unchecked
Red tint indicates area in which only landmark buildings are shown



ROAD CLASSIFICATION			
Primary highway, all weather, hard surface	Light-duty road, all weather, improved surface	Secondary highway, all weather, hard surface	Unimproved road, fair or dry weather
Interstate Route	U. S. Route	State Route	

HORSEHEADS, N. Y.

N4207.5—W7645/7.5

1969
PHOTOREVISED 1978
AMS 5668 III NE—SERIES V821

THIS MAP COMPLIES WITH NATIONAL MAP ACCURACY STANDARDS
FOR SALE BY U. S. GEOLOGICAL SURVEY, RESTON, VIRGINIA 22092
A FOLDER DESCRIBING TOPOGRAPHIC MAPS AND SYMBOLS IS AVAILABLE ON REQUEST

Revisions shown in purple compiled from aerial photographs
taken 1976 and other source data. This information not
field checked. Map edited 1978

RETURN TO:
USGS MAP HISTORICAL MAP ARCHIVES