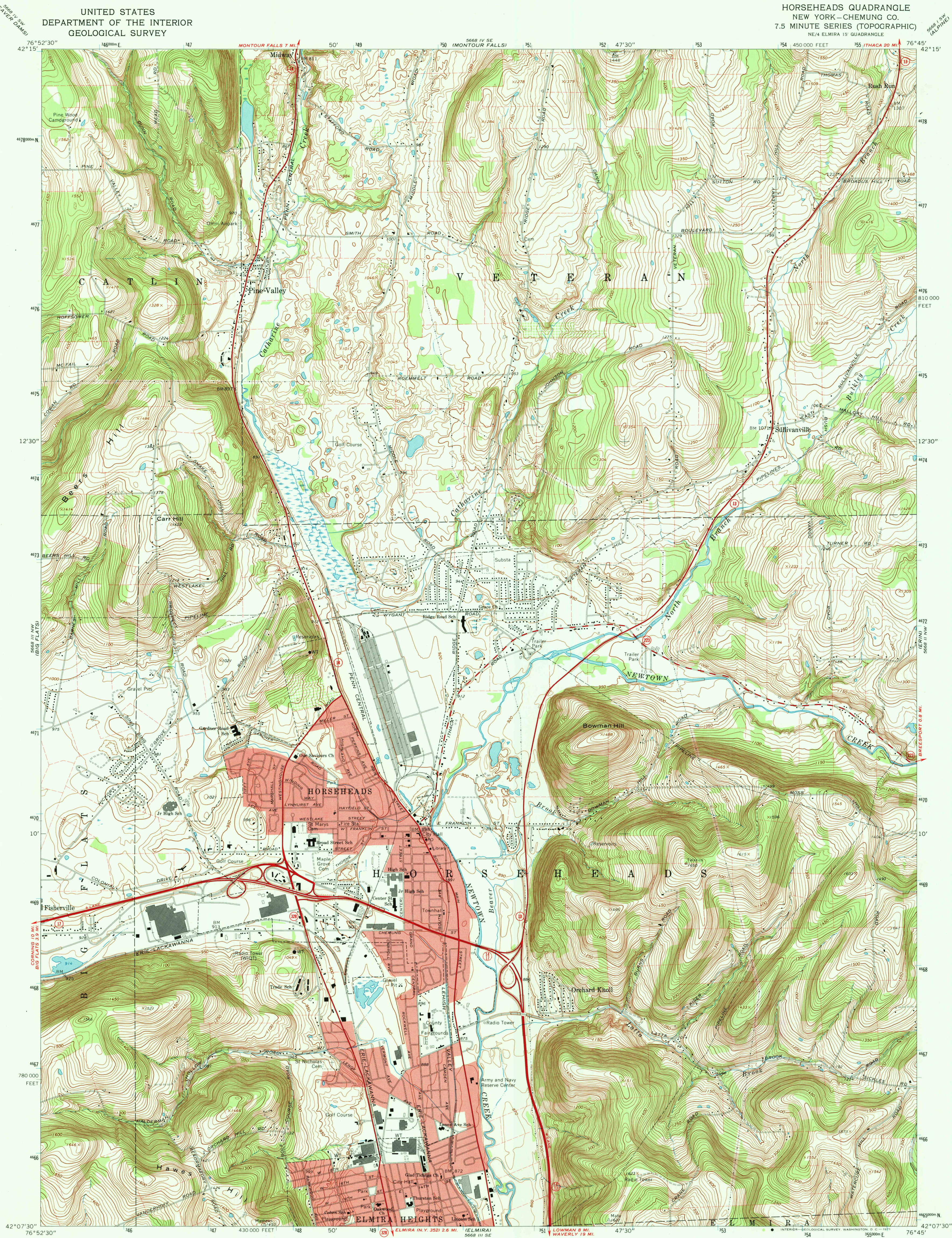


UNITED STATES  
DEPARTMENT OF THE INTERIOR  
GEOLOGICAL SURVEY

HORSEHEADS QUADRANGLE  
NEW YORK-CHEMUNG CO.  
7.5 MINUTE SERIES (TOPOGRAPHIC)  
NE 1/4 ELMIRA 15' QUADRANGLE



Mapped, edited, and published by the Geological Survey  
Revised in cooperation with New York Department of Transportation  
Control by USGS and USCGS  
Topography by photogrammetric methods from aerial photographs  
taken 1948. Field checked 1953. Revised from aerial  
photographs taken 1968. Field checked 1969  
Polyconic projection. 1927 North American datum  
10,000-foot grid based on New York coordinate system, central zone  
1000-meter Universal Transverse Mercator grid ticks, zone 18,  
shown in blue  
Fine red dashed lines indicate selected fence and field lines where  
generally visible on aerial photographs. This information is unchecked  
Red tint indicates area in which only landmark buildings are shown

SCALE 1:24,000  
CONTOUR INTERVAL 10 FEET  
DATUM IS MEAN SEA LEVEL  
THIS MAP COMPLIES WITH NATIONAL MAP ACCURACY STANDARDS  
FOR SALE BY U. S. GEOLOGICAL SURVEY, WASHINGTON, D. C. 20242  
A FOLDER DESCRIBING TOPOGRAPHIC MAPS AND SYMBOLS IS AVAILABLE ON REQUEST

ROAD CLASSIFICATION  
Primary highway, all weather, Light-duty road, all weather,  
hard surface Improved surface  
Unimproved road, fair or dry  
weather  
State Route

HORSEHEADS, N. Y.  
NE 1/4 ELMIRA 15' QUADRANGLE  
N4207.5-W7645.7/5  
1969  
AMS 5668 III NE-SERIES V821

NOV 9 1971  
USGS  
HISTORICAL FILE  
TOPOGRAPHIC DIVISION