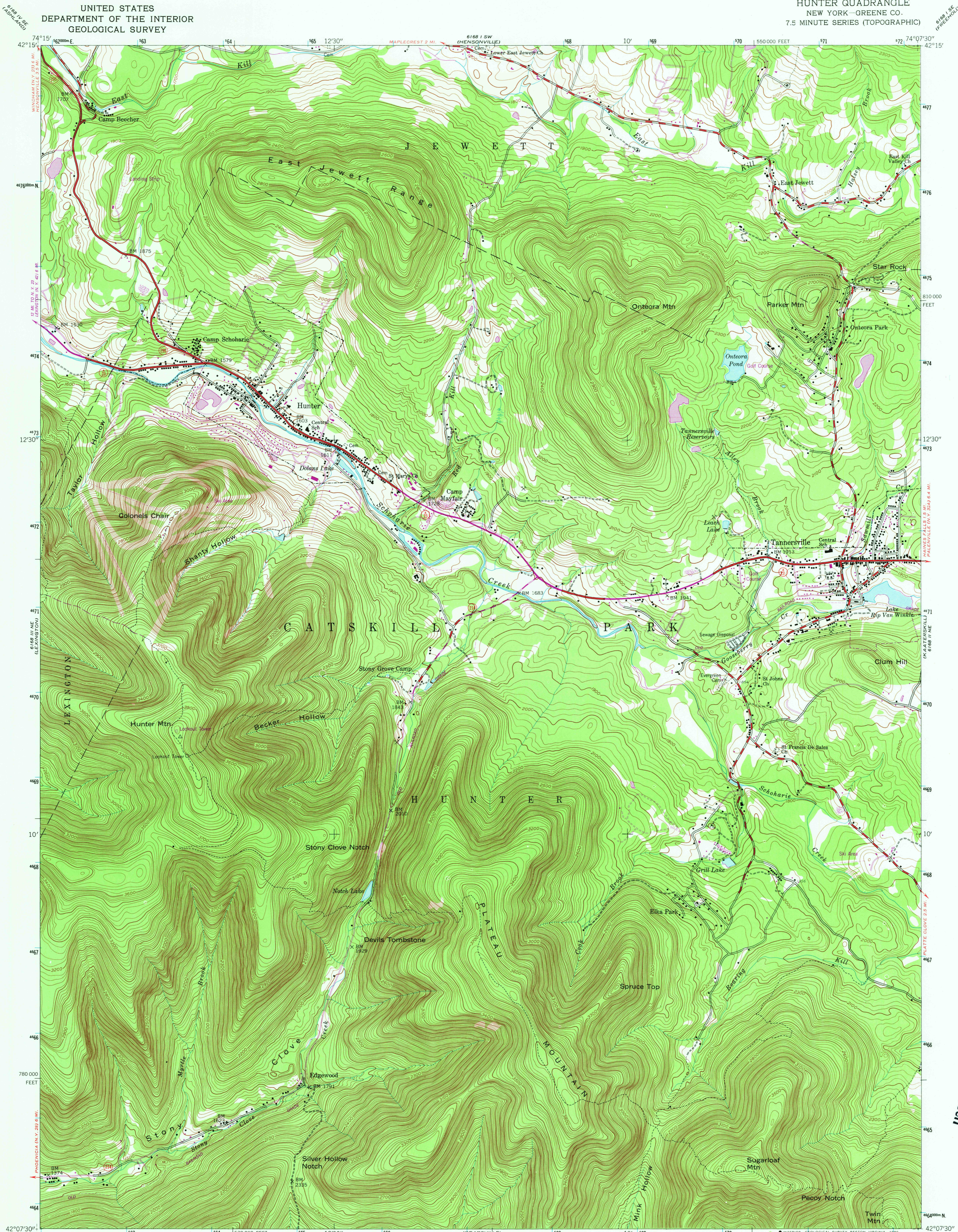
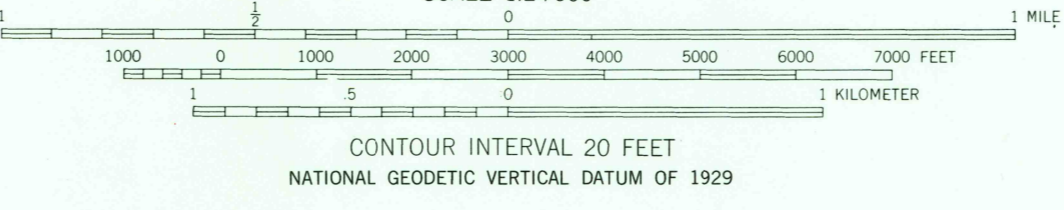
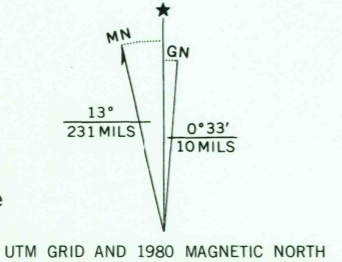


UNITED STATES
DEPARTMENT OF THE INTERIOR
GEOLOGICAL SURVEY

HUNTER QUADRANGLE
NEW YORK-GREENE CO.
7.5 MINUTE SERIES (TOPOGRAPHIC)



Mapped by the Defense Mapping Agency
Published for civil use by the Geological Survey
Control by USGS, NOS/NOAA, and TVA
Topography from aerial photographs by photogrammetric methods
Aerial photographs taken 1943. Field checked 1945
Polyconic projection. 10,000-foot grid based on New York coordinate
system, east zone. 1000-meter Universal Transverse Mercator grid ticks,
zone 18, shown in blue. 1927 North American Datum. To place on the
predicted North American Datum 1983 move the projection lines
6 meters south and 34 meters west as shown by dashed corner ticks
Revisions shown in purple compiled by the Geological Survey
from photographs taken 1978. This information not
field checked. Map edited 1980



THIS MAP COMPLIES WITH NATIONAL MAP ACCURACY STANDARDS
FOR SALE BY U.S. GEOLOGICAL SURVEY, RESTON, VIRGINIA 22092
A FOLDER DESCRIBING TOPOGRAPHIC MAPS AND SYMBOLS IS AVAILABLE ON REQUEST



ROAD CLASSIFICATION
Heavy-duty ——— Light-duty ———
Medium-duty ——— Unimproved dirt ———
State Route ———

HUNTER, N. Y.
N4207.5-W7407.5/7.5
1945
PHOTOREVISED 1980
DMA 6168 II NW-SERIES V821

USGS
Historical File
National Map File Div.

MAR 2 1981

2833

RETURN TO:
USGS NMD HISTORICAL MAP ARCHIVES