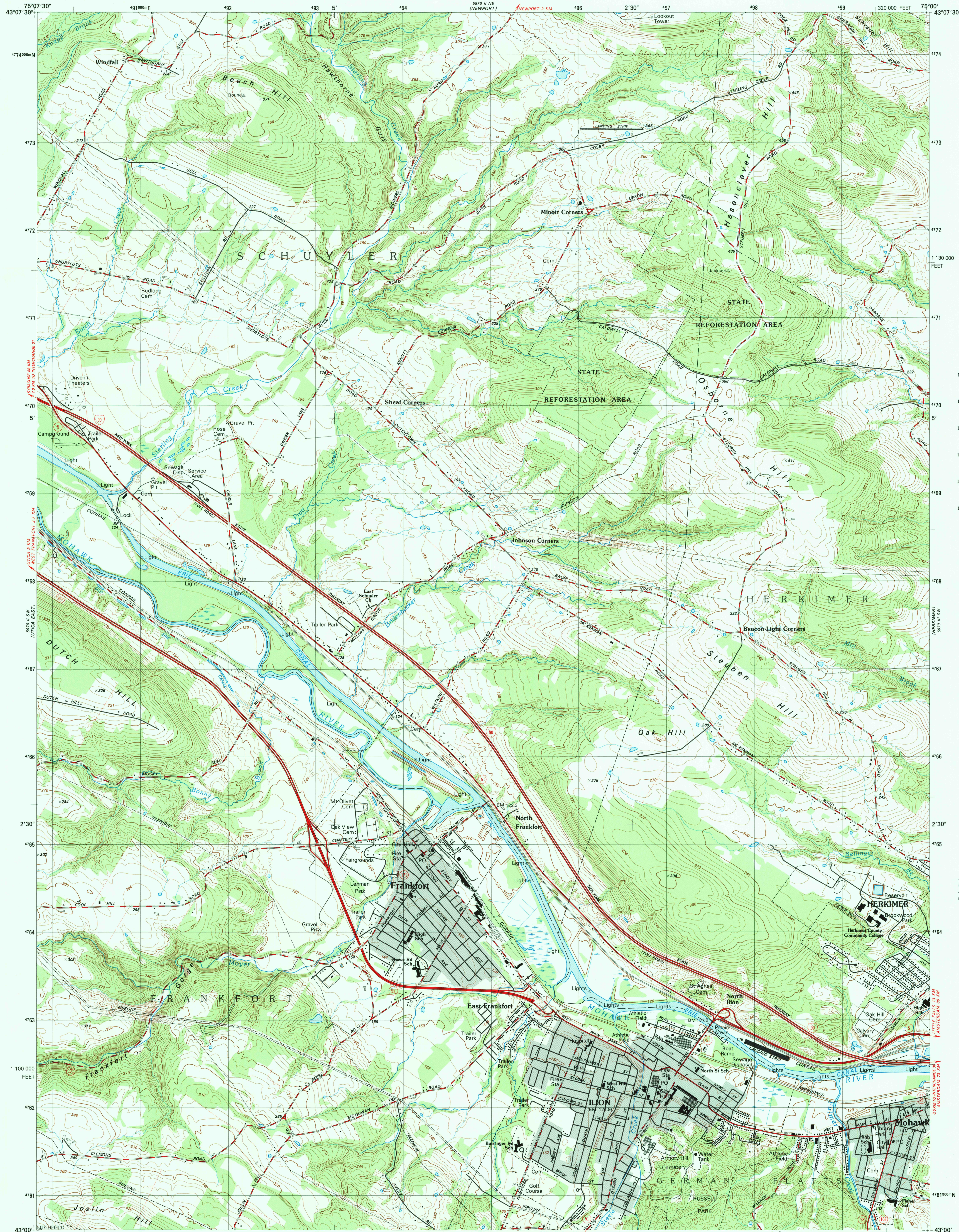


UNITED STATES
DEPARTMENT OF THE INTERIOR
GEOLOGICAL SURVEY

ILION QUADRANGLE
NEW YORK-HERKIMER CO.
7.5 MINUTE SERIES (TOPOGRAPHIC)



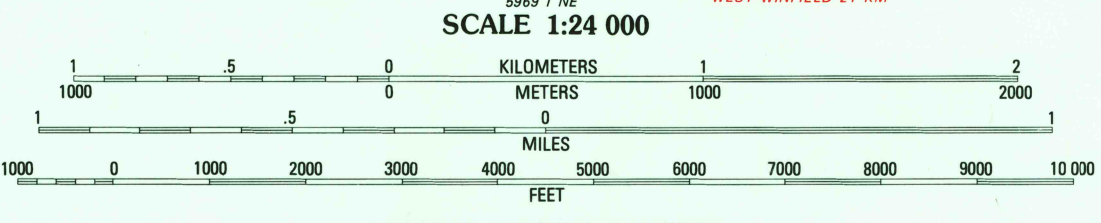
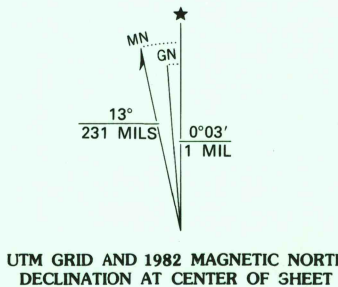
CONVERSION
SCALES



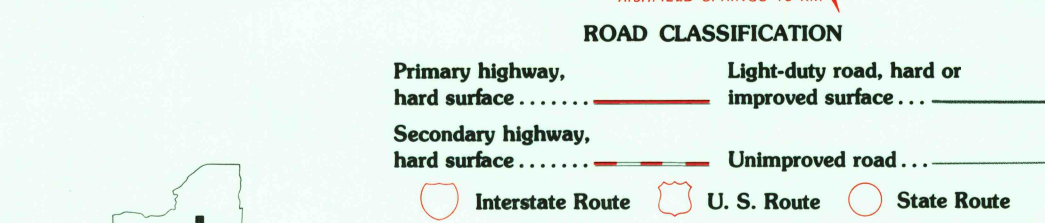
Feet	Meters
1	3048
2	6096
3	9144
4	12192
5	15240
6	18288
7	21336
8	24384
9	27432
10	30480

To convert feet to meters
multiply by 3.048
To convert meters to feet
multiply by 3.2808

Produced by the United States Geological Survey
in cooperation with New York Department of Transportation
Control by USGS and NOS/NOAA
Compiled by photogrammetric methods from aerial photographs
taken 1974. Field checked 1975. Map edited 1982
Supersedes map dated 1943
Projection and 1000-meter grid, zone 18: Universal
Transverse Mercator
10,000-foot grid ticks based on New York coordinate
system, east zone
1927 North American Datum
To place on the predicted North American Datum 1983
move the projection lines 3 meters south and
31 meters west as shown by dashed corner ticks
Fine red dashed lines indicate selected fence and field lines where
generally visible on aerial photographs. This information is unchecked
Gray tint indicates areas in which only landmark buildings are shown
There may be private inholdings within the boundaries of
the National or State reservations shown on this map



CONTOUR INTERVAL 6 METERS
SUPPLEMENTARY CONTOUR INTERVAL 3 METERS
NATIONAL GEODETIC VERTICAL DATUM OF 1929
CONTRAL ELEVATIONS SHOWN TO THE NEAREST 0.1 METER
OTHER ELEVATIONS SHOWN TO THE NEAREST METER
THIS MAP COMPLIES WITH NATIONAL MAP ACCURACY STANDARDS
FOR SALE BY U. S. GEOLOGICAL SURVEY, RESTON, VIRGINIA 22092
A FOLDER DESCRIBING TOPOGRAPHIC MAPS AND SYMBOLS IS AVAILABLE ON REQUEST



ROAD CLASSIFICATION
Primary highway, hard surface Light-duty road, hard or improved surface
Secondary highway, hard surface Unimproved road
Interstate Route U. S. Route State Route
QUADRANGLE LOCATION
NEW YORK
CONTOURS AND ELEVATIONS IN METERS
ILION, N. Y.
N4300-W7500/7.5
1982
DMA 5970 II SE-SERIES V821

MAR 5 1984

RETURN TO:
USGS AND HISTORICAL MAP ARCHIVES