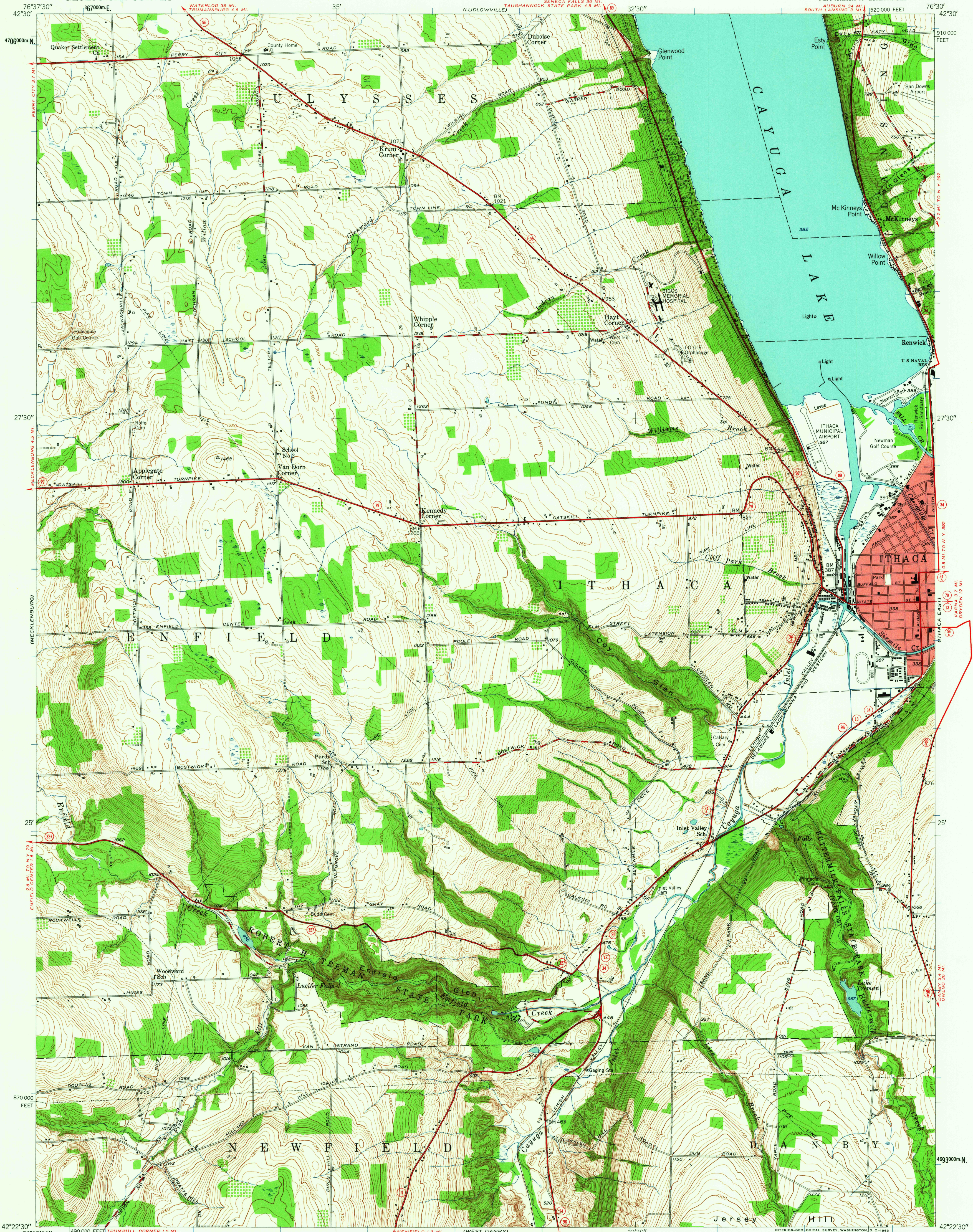


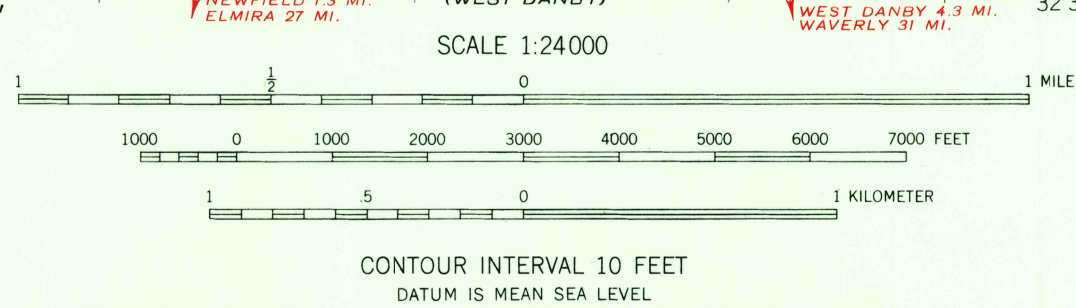
UNITED STATES
DEPARTMENT OF THE INTERIOR
GEOLOGICAL SURVEY

ITHACA WEST QUADRANGLE
NEW YORK-TOMPKINS CO.
7.5 MINUTE SERIES (TOPOGRAPHIC)
NE/4 ITHACA 15' QUADRANGLE
N4222.5-W7630.75



Mapped, edited, and published by the Geological Survey
Control by USGS and USCGS
Topography from aerial photographs by multiplex methods
Aerial photographs taken 1944. Field check 1949
Polyconic projection. 1927 North American datum
10,000-foot grid based on New York coordinate system,
central zone
Red tint indicates area in which only
landmark buildings are shown
1000-meter Universal Transverse Mercator grid ticks,
zone 18, shown in blue

10°
TRUE NORTH
MAGNETIC NORTH
APPROXIMATE MEAN
DECLINATION, 1949



USGS
Historical File
Topographic Division

ROAD CLASSIFICATION
1965
Heavy-duty ——— Light-duty ———
Medium-duty ——— Unimproved dirt ———
○ State Route

U.S.G.S. ITHACA WEST, N. Y.
NE/4 ITHACA 15' QUADRANGLE
N4222.5-W7630.75
FILE COPY
TOPOGRAPHIC DIVISION
1949

THIS MAP COMPLIES WITH NATIONAL MAP ACCURACY STANDARDS
FOR SALE BY U. S. GEOLOGICAL SURVEY, WASHINGTON 25, D. C.
A FOLDER DESCRIBING TOPOGRAPHIC MAPS AND SYMBOLS IS AVAILABLE ON REQUEST

406 2 01863

6325