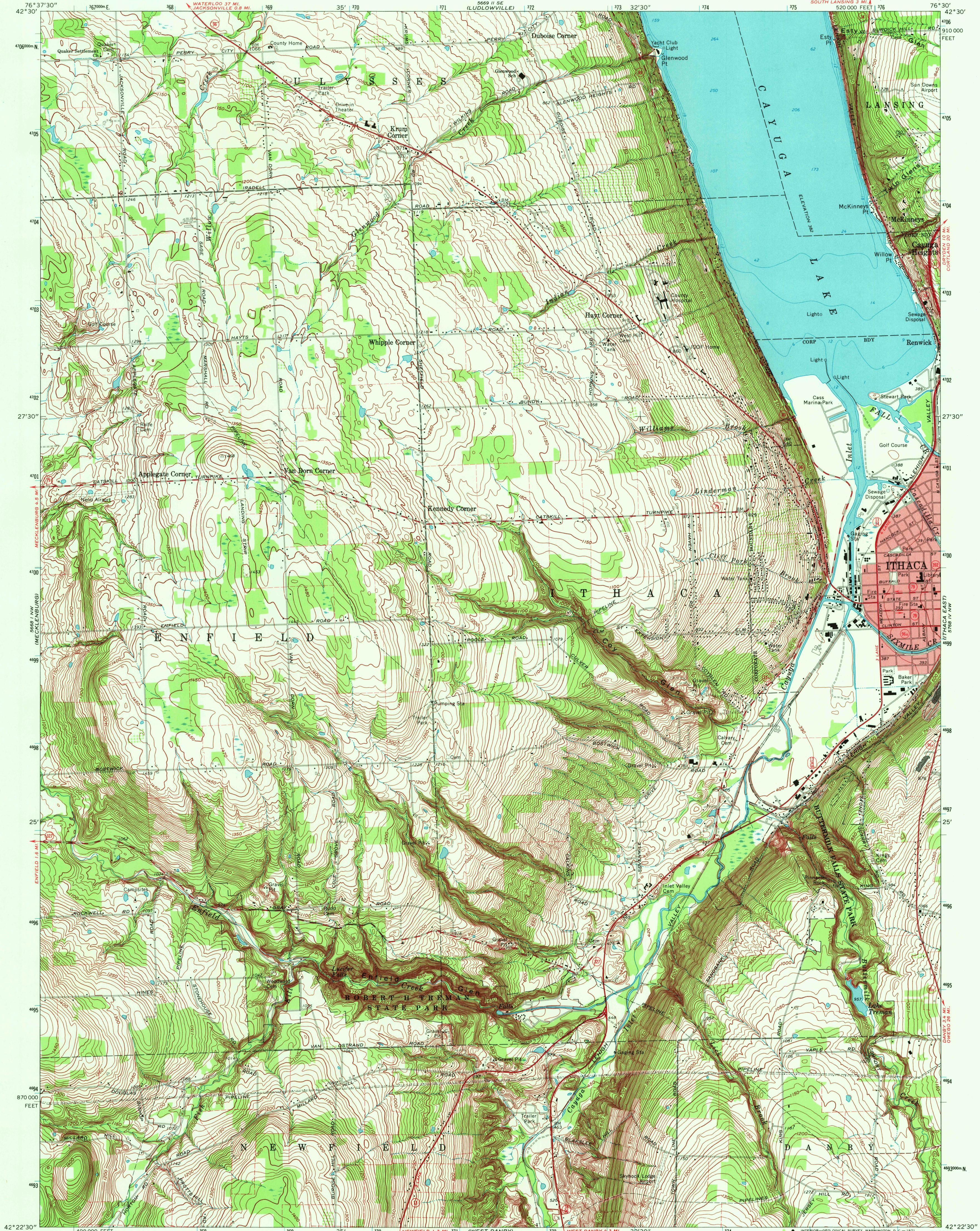
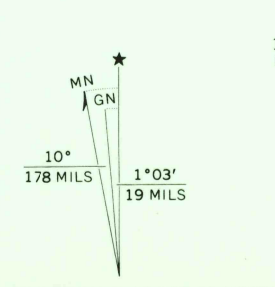


UNITED STATES  
DEPARTMENT OF THE INTERIOR  
GEOLOGICAL SURVEY

ITHACA WEST QUADRANGLE  
NEW YORK-TOMPKINS CO.  
7.5 MINUTE SERIES (TOPOGRAPHIC)



Mapped, edited, and published by the Geological Survey  
Revised in cooperation with New York Department of Transportation  
Control by USGS and USC&GS  
Topography by photogrammetric methods from aerial photographs  
taken 1944. Field checked 1949. Revised from aerial  
photographs taken 1968. Field checked 1969  
Selected hydrographic data compiled from U. S. Lake Survey Chart 187 (1968)  
This information is not intended for navigational purposes  
Polyconic projection. 1927 North American datum  
10,000-foot grid based on New York coordinate system, central zone  
1000-meter Universal Transverse Mercator grid ticks,  
zone 18, shown in blue  
Fine red dashed lines indicate selected fence and field lines where  
generally visible on aerial photographs. This information is unchecked  
Red tint indicates areas in which only landmark buildings are shown



SCALE 1:24,000  
0 1000 2000 3000 4000 5000 6000 7000 FEET  
0 1 2 3 4 5 6 7 8 9 10 KILOMETER  
CONTOUR INTERVAL 10 FEET  
DATUM IS MEAN SEA LEVEL  
DEPTH CURVES AND SOUNDINGS IN FEET—DATUM IS 382 FEET



ROAD CLASSIFICATION  
Primary highway, all weather, hard surface  
Secondary highway, all weather, weather  
Light-duty road, all weather, improved surface  
Unimproved road, fair or dry weather  
State Route

ITHACA WEST, N. Y.  
N4222.5—W7630.7.5  
1969  
AMS 5668 I NE—SERIES V821

JAN 5 1972