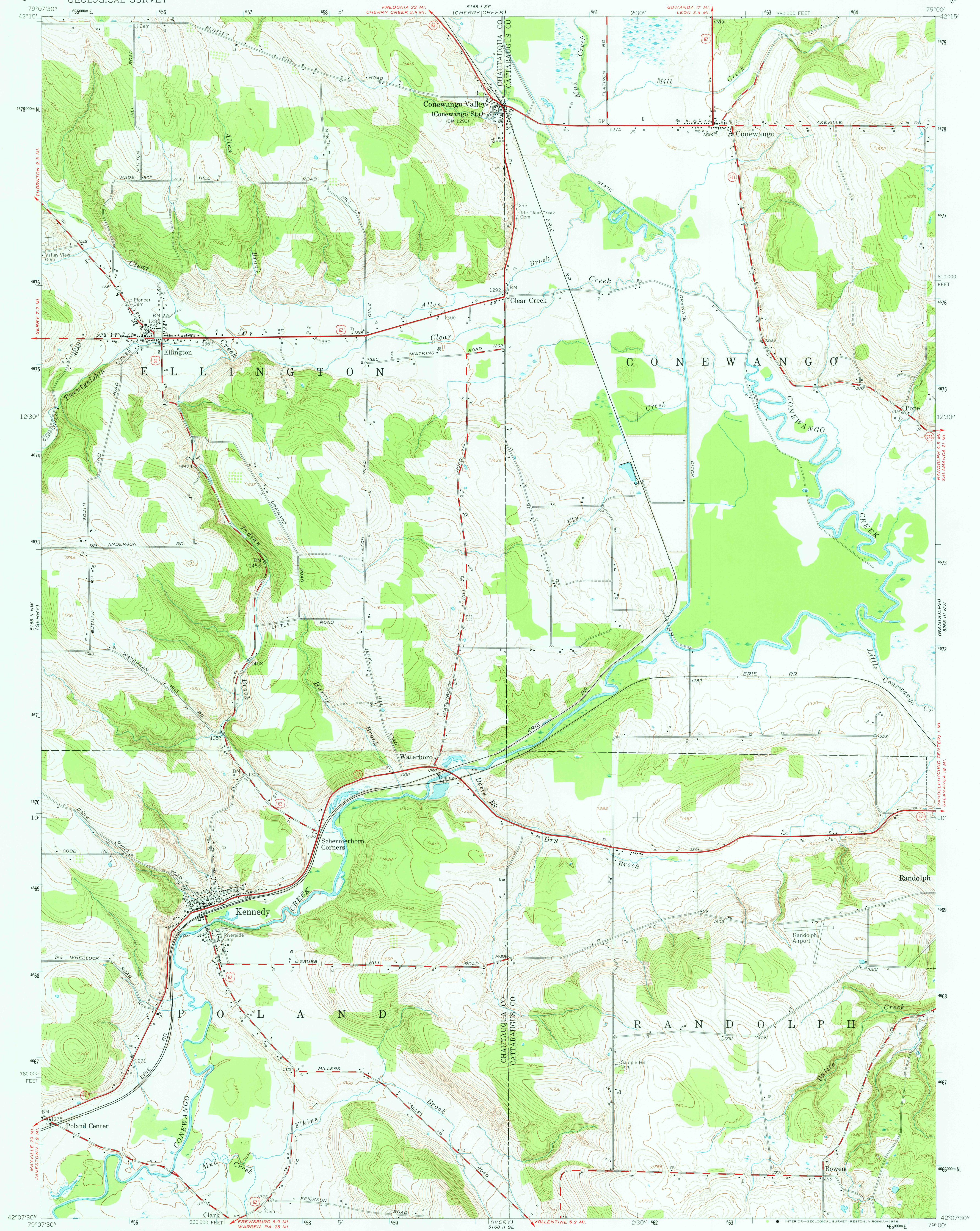


5 68 1 SW
(HAWLEY)

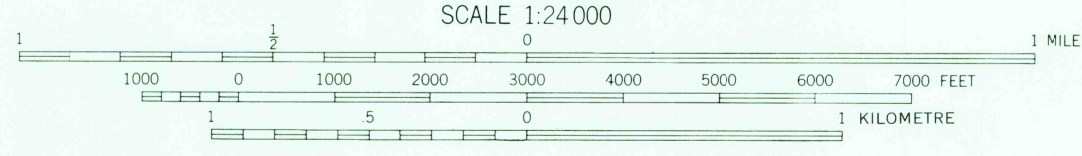
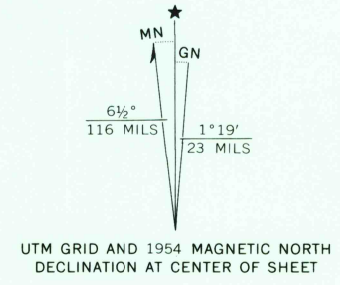
UNITED STATES
DEPARTMENT OF THE INTERIOR
GEOLOGICAL SURVEY

KENNEDY QUADRANGLE
NEW YORK
7.5 MINUTE SERIES (TOPOGRAPHIC)

5 68 1 NW
(NEW ALBION)

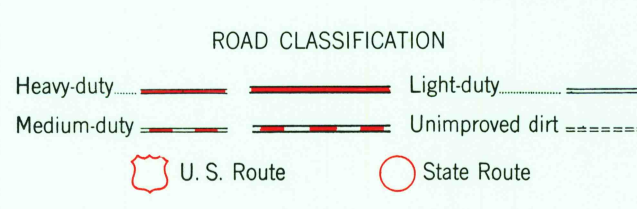


Mapped, edited, and published by the Geological Survey
Control by USGS and USC&GS
Topography from aerial photographs by stereophotogrammetric
methods. Aerial photographs taken 1952. Field check 1954
Polyconic projection. 1927 North American datum
10,000-foot grid based on New York coordinate system,
west zone
Unchecked elevations are shown in brown
1000-metre Universal Transverse Mercator grid ticks,
zone 17, shown in blue



CONTOUR INTERVAL 10 FEET
NATIONAL GEODETIC VERTICAL DATUM OF 1929

THIS MAP COMPLIES WITH NATIONAL MAP ACCURACY STANDARDS
FOR SALE BY U. S. GEOLOGICAL SURVEY, RESTON, VIRGINIA 22092
A FOLDER DESCRIBING TOPOGRAPHIC MAPS AND SYMBOLS IS AVAILABLE ON REQUEST



USGS
Historical File
Topographic Division

KENNEDY, N. Y.
N4207.5-W7900/7.5

1954
AMS 5168 II NE-SERIES V821

OCT 22 1976