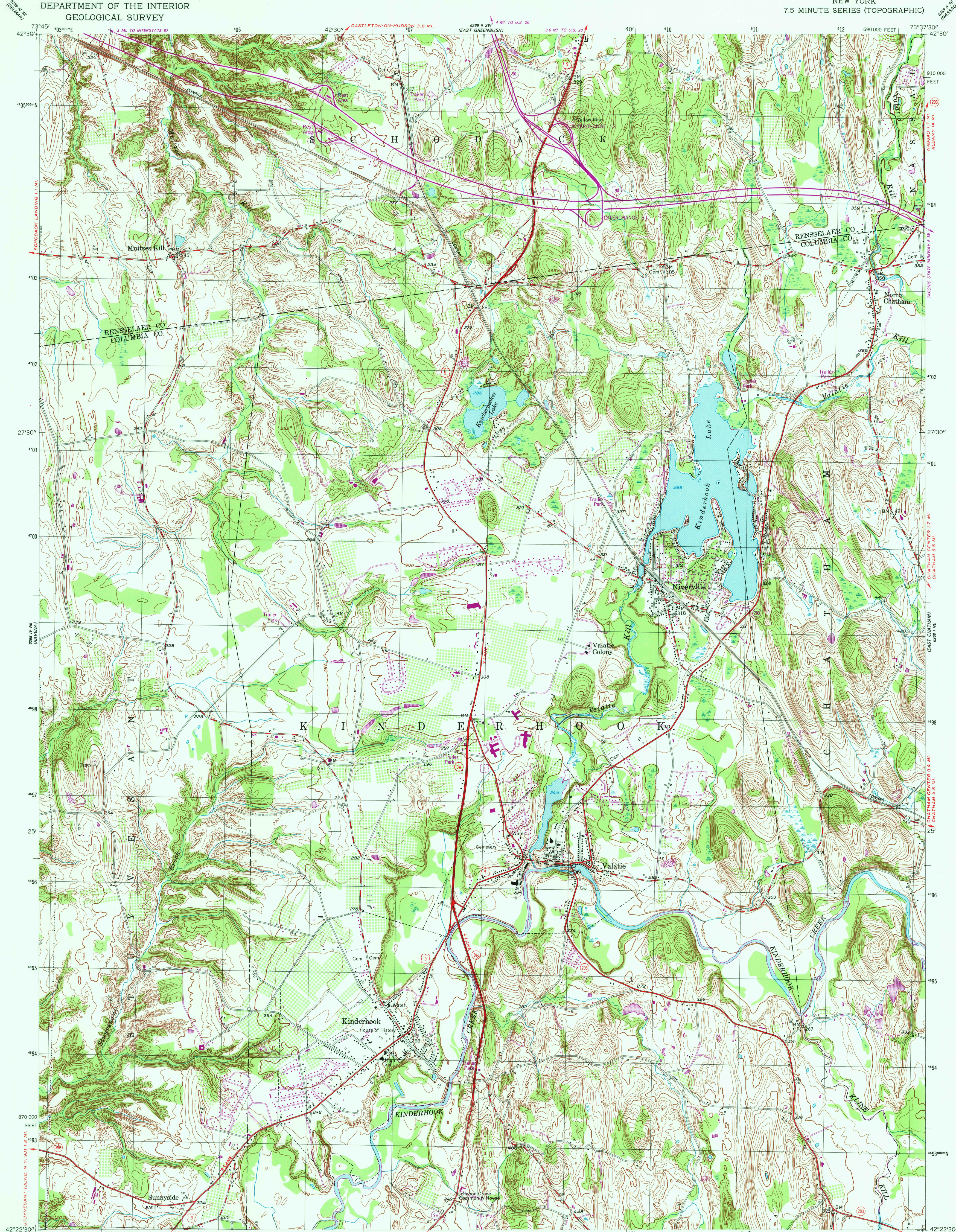


UNITED STATES  
DEPARTMENT OF THE INTERIOR  
GEOLOGICAL SURVEY

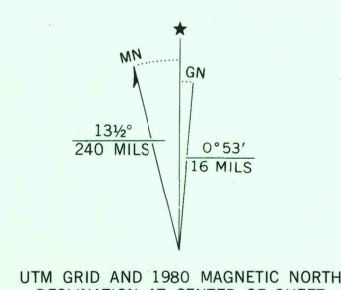
KINDERHOOK QUADRANGLE  
NEW YORK  
7.5 MINUTE SERIES (TOPOGRAPHIC)



Mapped, edited, and published by the Geological Survey  
Control by USGS and NOS/NOAA

Topography from aerial photographs by stereophotogrammetric methods. Aerial photographs taken 1952. Field checked 1953. Polyconic projection. 10,000-foot grid based on New York coordinate system, east zone. 1000-meter Universal Transverse Mercator grid zone 18. 1927 North American Datum. To place on the predicted North American Datum 1983 move the projection lines 5 meters south and 35 meters west as shown by dashed corner ticks.

Revisions shown in purple compiled from aerial photographs taken 1978 and other source data. This information not field checked. Map edited 1980.



CONTOUR INTERVAL 10 FEET  
NATIONAL GEODETIC VERTICAL DATUM OF 1929

THIS MAP COMPLIES WITH NATIONAL MAP ACCURACY STANDARDS  
FOR SALE BY U. S. GEOLOGICAL SURVEY, RESTON, VIRGINIA 22092  
A FOLDER DESCRIBING TOPOGRAPHIC MAPS AND SYMBOLS IS AVAILABLE ON REQUEST



ROAD CLASSIFICATION  
Heavy-duty ——— Light-duty ———  
Medium-duty ——— Unimproved dirt ———  
Interstate Route U. S. Route State Route

KINDERHOOK, N. Y.  
N4222.5-W7337.5/7.5  
1953  
PHOTOREVISED 1980  
DMA 6268 1 NW-SERIES V821

JUN 29 1981  
2100