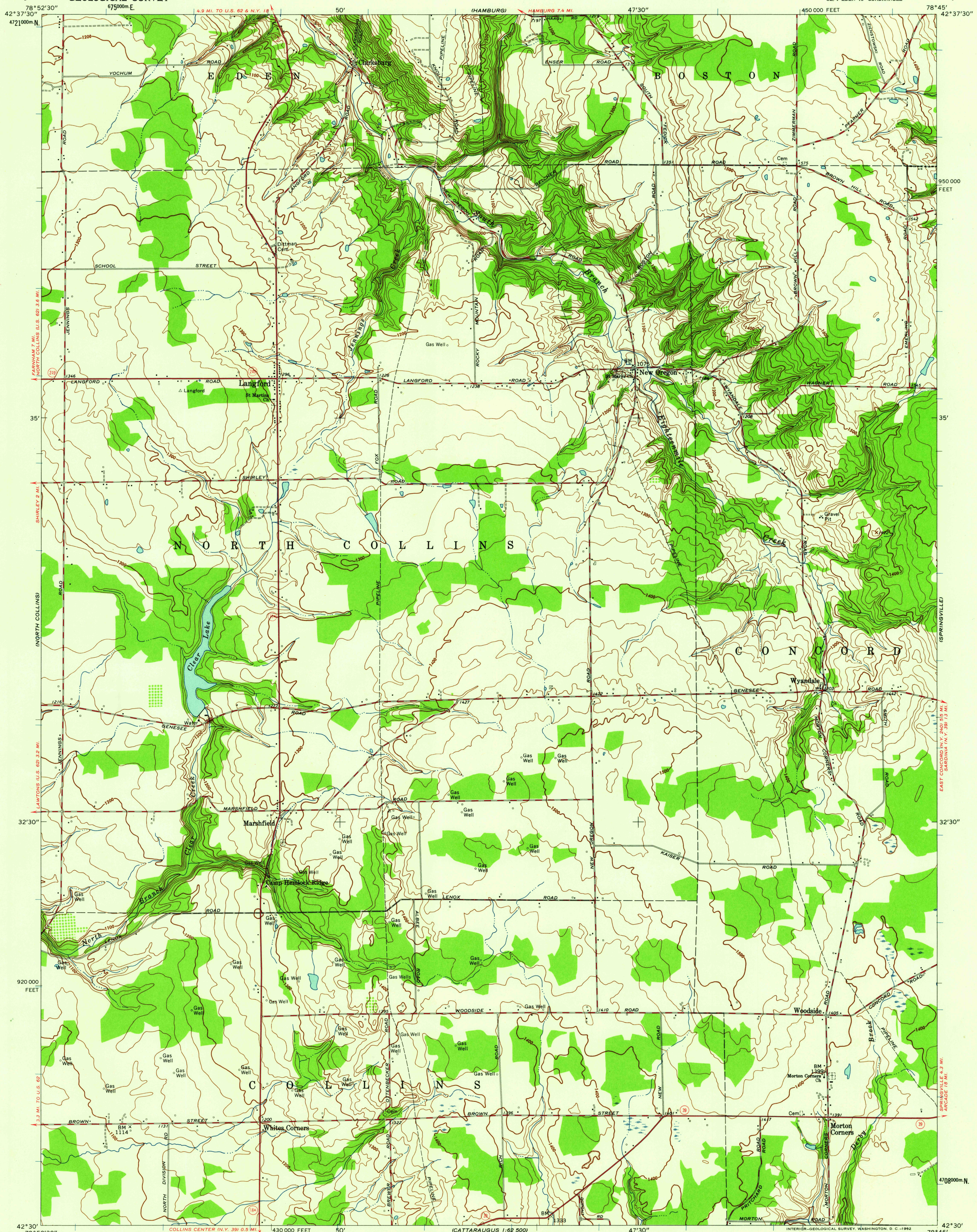


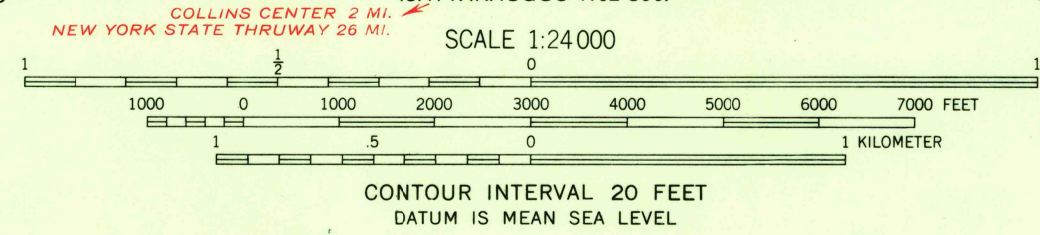
UNITED STATES  
DEPARTMENT OF THE INTERIOR  
GEOLOGICAL SURVEY

LANGFORD QUADRANGLE  
NEW YORK-ERIE CO.  
7.5 MINUTE SERIES (TOPOGRAPHIC)  
SE 1/4 EDEN 15' QUADRANGLE



Mapped by the Army Map Service  
Edited and published by the Geological Survey  
Control by USGS, USC&GS, and USCE  
Topography by photogrammetric methods from aerial  
photographs taken 1942. Field checked 1942  
Culture revised by the Geological Survey 1960  
Polyconic projection. 1927 North American datum  
10,000-foot grid based on New York coordinate system,  
west zone  
1000-meter Universal Transverse Mercator grid ticks,  
zone 17, shown in blue

TRUE NORTH  
MAGNETIC NORTH  
APPROXIMATE MEAN  
DECLINATION, 1960



USGS  
Historical File  
Topographic Division



ROAD CLASSIFICATION  
Heavy-duty ——— Light-duty ———  
Medium-duty ——— Unimproved dirt ———  
State Route —○—

LANGFORD, N. Y.  
SE 1/4 EDEN 15' QUADRANGLE  
N4230—W7845/7.5

1960

THIS MAP COMPLIES WITH NATIONAL MAP ACCURACY STANDARDS  
FOR SALE BY U.S. GEOLOGICAL SURVEY, WASHINGTON 25, D. C.  
A FOLDER DESCRIBING TOPOGRAPHIC MAPS AND SYMBOLS IS AVAILABLE ON REQUEST

SEP 14 1962

2695