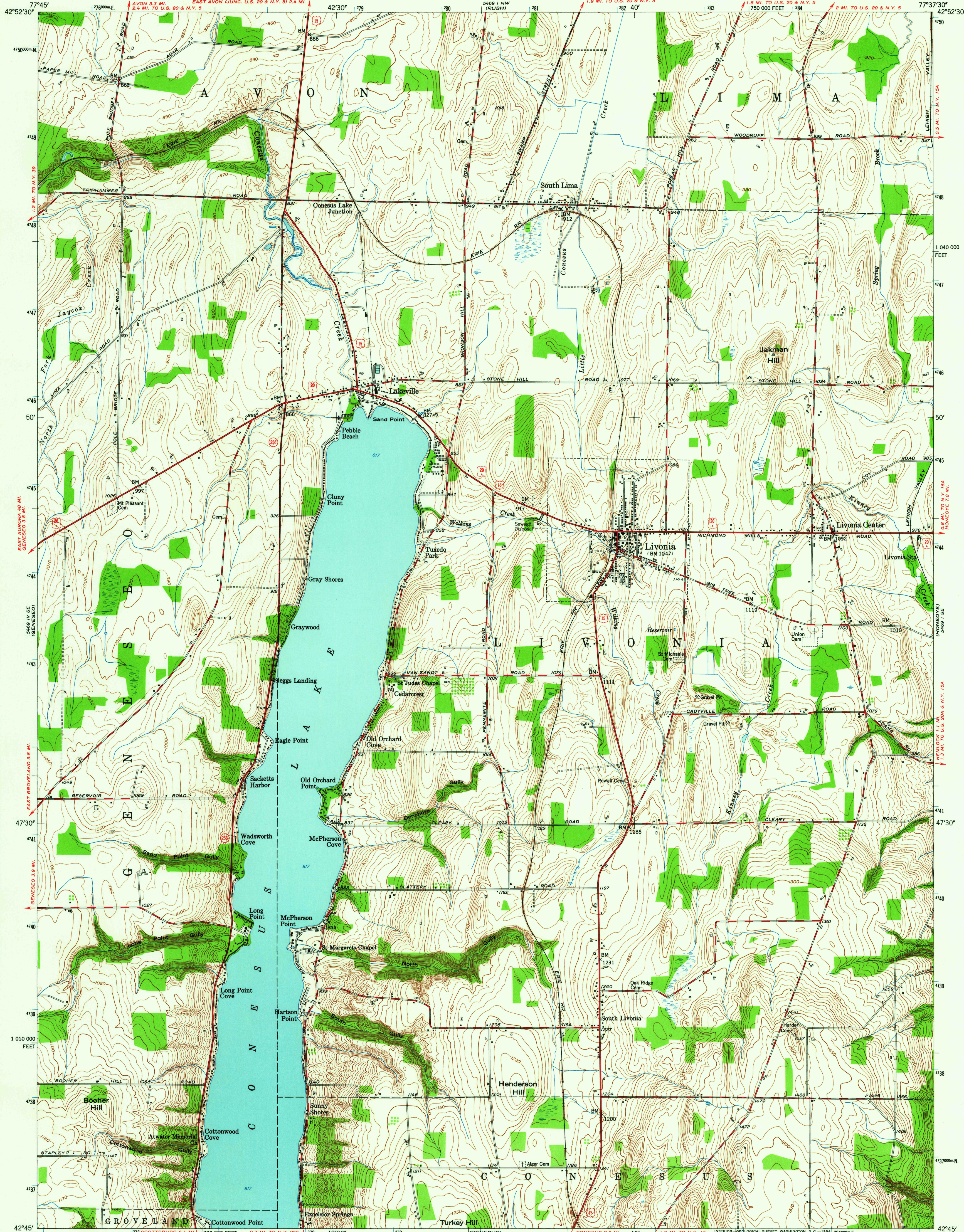


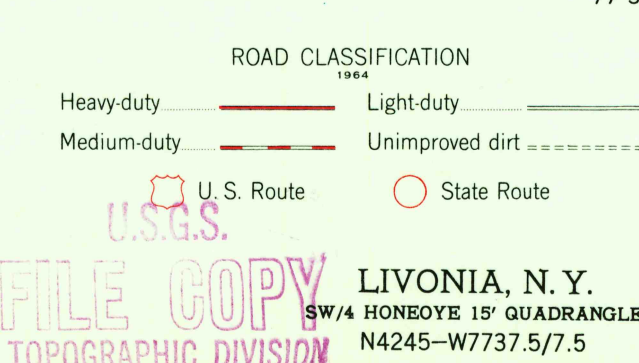
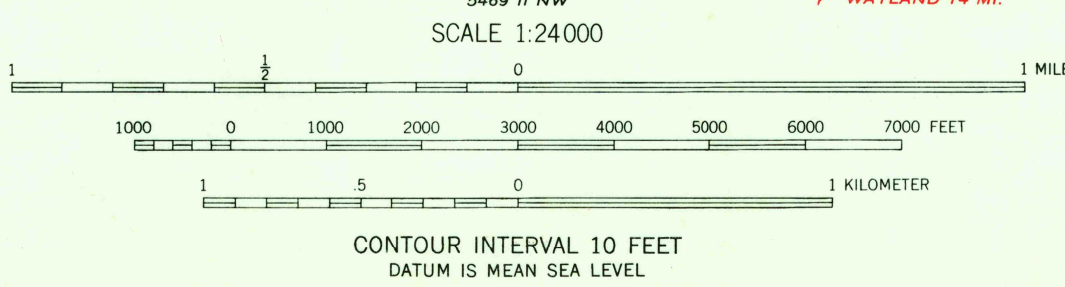
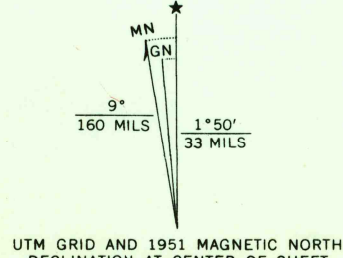
UNITED STATES  
DEPARTMENT OF THE INTERIOR  
GEOLOGICAL SURVEY

STATE OF NEW YORK  
DEPARTMENT OF PUBLIC WORKS

LIVONIA QUADRANGLE  
NEW YORK-LIVINGSTON CO.  
7.5 MINUTE SERIES (TOPOGRAPHIC)  
SW/4 HONEYEYE 15' QUADRANGLE



Mapped, edited, and published by the Geological Survey  
Control by USGS, USC&GS, and USCE  
Culture and drainage in part compiled by Corps of Engineers,  
Dept. of the Army, from aerial photographs taken 1942  
Topography by plane-table surveys 1951  
Polyconic projection. 1927 North American datum  
10,000-foot grid based on New York coordinate system,  
west zone  
1000-meter Universal Transverse Mercator grid ticks,  
zone 18, shown in blue



FILE COPY  
LIVONIA, N.Y.  
SW/4 HONEYEYE 15' QUADRANGLE  
N4245-W7737.5/7.5

1951

AMS 5469 1 SW-SERIES V821

THIS MAP COMPLIES WITH NATIONAL MAP ACCURACY STANDARDS.  
FOR SALE BY U. S. GEOLOGICAL SURVEY, WASHINGTON 25, D. C.  
A FOLDER DESCRIBING TOPOGRAPHIC MAPS AND SYMBOLS IS AVAILABLE ON REQUEST

2745  
MAY 22 1964