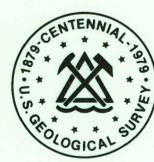


5670 III SW
(1969)

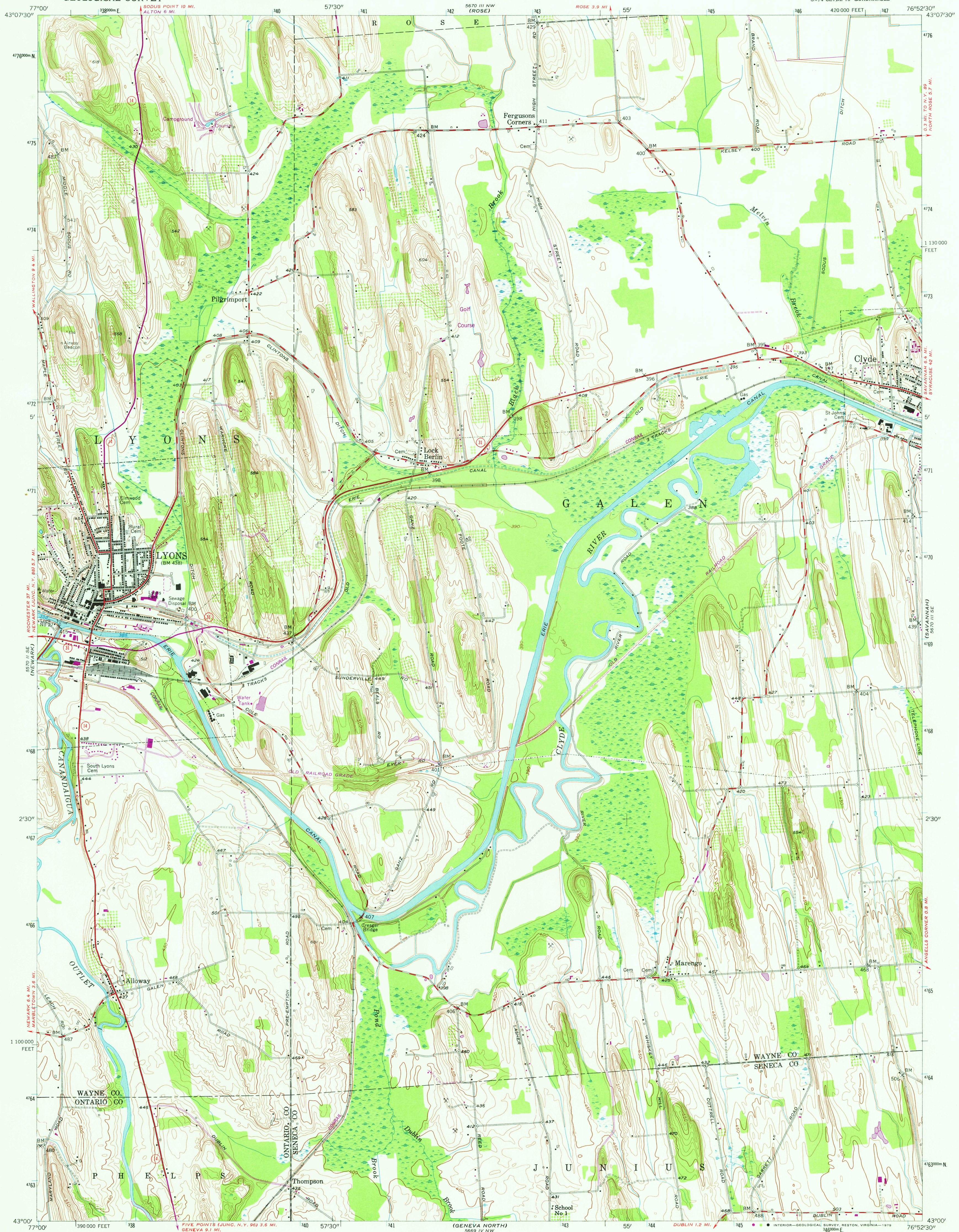
UNITED STATES
DEPARTMENT OF THE INTERIOR
GEOLOGICAL SURVEY



STATE OF NEW YORK
DEPARTMENT OF PUBLIC WORKS

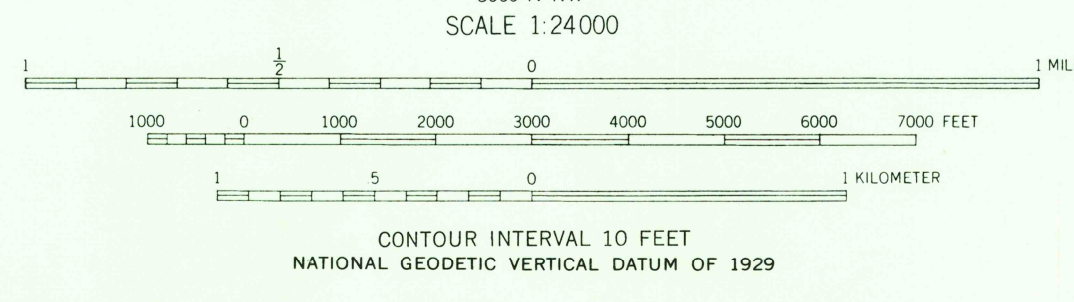
LYONS QUADRANGLE
NEW YORK
7.5 MINUTE SERIES (TOPOGRAPHIC)
SW 1/4 CLYDE 15' QUADRANGLE

5670 III NE
(1969)



Mapped, edited, and published by the Geological Survey
Control by USGS, USC&GS, and TVA
Culture and drainage in part compiled by Corps of Engineers
Dept. of the Army, from aerial photographs taken 1942
Topography by plane-table surveys 1953
Polyconic projection. 1927 North American datum
10,000-foot grid based on New York coordinate system,
central zone
1000-meter Universal Transverse Mercator grid ticks,
zone 18, shown in blue
Revisions shown in purple and woodland compiled from
aerial photographs taken 1976 and other source data.
This information not field checked. Map edited 1978

UTM GRID AND 1978 MAGNETIC NORTH
DECLINATION AT CENTER OF SHEET



ROAD CLASSIFICATION
Heavy-duty ——— Light-duty ———
Medium-duty ——— Unimproved dirt ———
U. S. Route ——— State Route ———
USGS
Historical File
Topographic Division
LYONS, N. Y.
SW 1/4 CLYDE 15' QUADRANGLE
N 4300—W 7652.5/7.5
1953
PHOTOREVISED 1978
AMS 5670 III SW—SERIES V821

APR 26 1979
2400