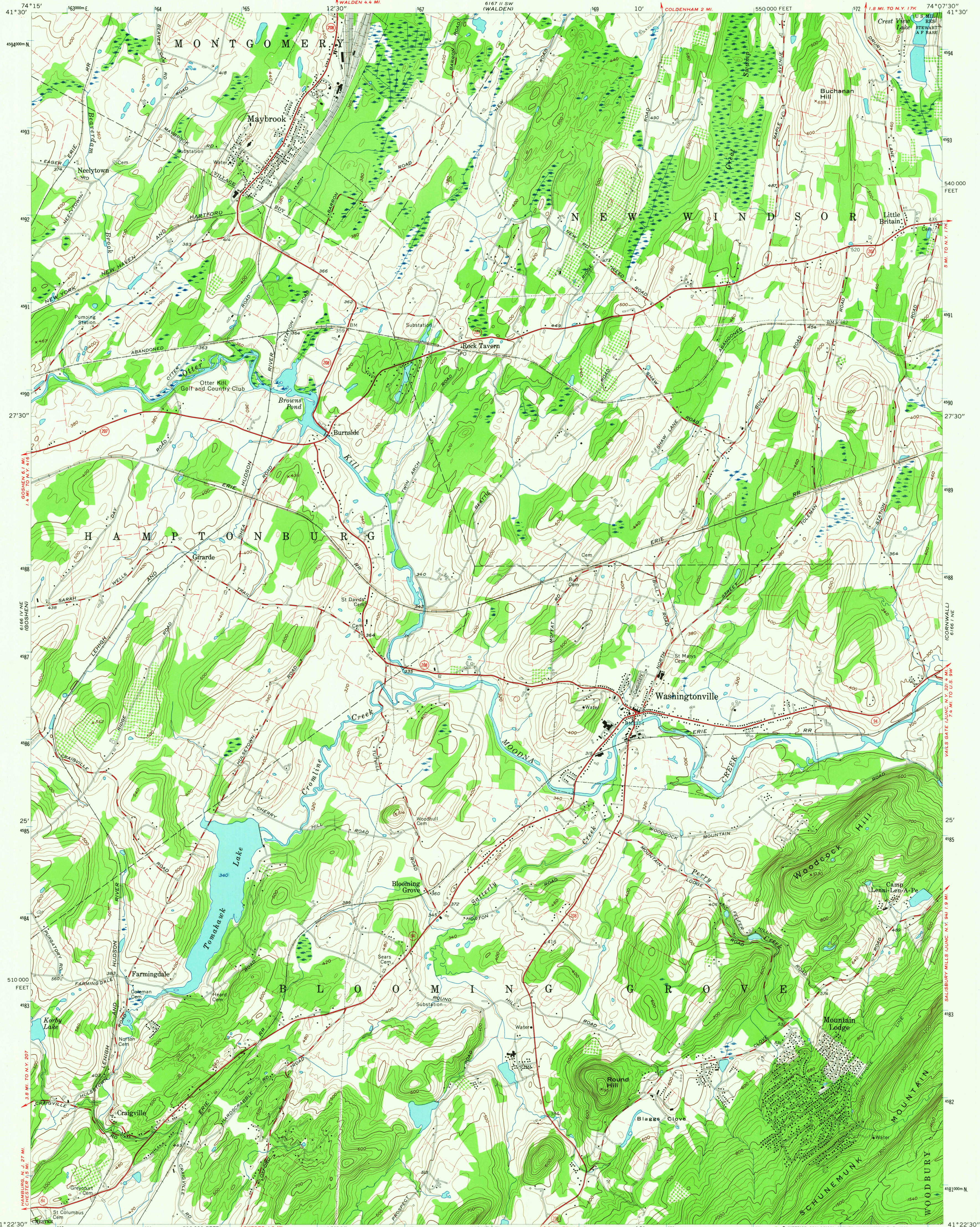
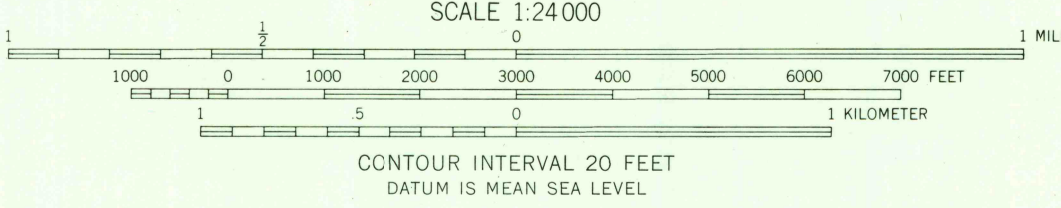
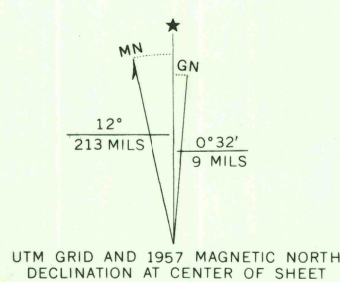


UNITED STATES  
DEPARTMENT OF THE INTERIOR  
GEOLOGICAL SURVEY

MAYBROOK QUADRANGLE  
NEW YORK-ORANGE CO.  
7.5 MINUTE SERIES (TOPOGRAPHIC)  
NW/4 SCHUMUNK 15' QUADRANGLE



Mapped, edited, and published by the Geological Survey  
Control by USGS and USC&GS  
Topography from aerial photographs by photogrammetric methods  
Aerial photographs taken 1955 and 1956. Field check 1957  
Polyconic projection. 1927 North American datum  
10,000-foot grid based on New York coordinate system,  
east zone  
1000-meter Universal Transverse Mercator grid ticks,  
zone 18, shown in blue  
Fine red dashed lines indicate selected fence and field lines  
visible on aerial photographs. This information is unchecked  
Unchecked elevations are shown in brown



USGS  
Historical File  
Topographic Division

ROAD CLASSIFICATION  
Heavy-duty —————  
Medium-duty —————  
Light-duty —————  
Unimproved dirt —————  
State Route



U.S.G.S.  
FILE COPY  
TOPOGRAPHIC DIVISION  
MAYBROOK, N. Y.  
NW/4 SCHUMUNK 15' QUADRANGLE  
N41225-W74075/7.5  
1957  
AMS 6166 1 NW-SERIES V821

THIS MAP COMPLIES WITH NATIONAL MAP ACCURACY STANDARDS  
FOR SALE BY U. S. GEOLOGICAL SURVEY, WASHINGTON, D. C. 20242  
A FOLDER DESCRIBING TOPOGRAPHIC MAPS AND SYMBOLS IS AVAILABLE ON REQUEST

4170  
JUL 14 1958