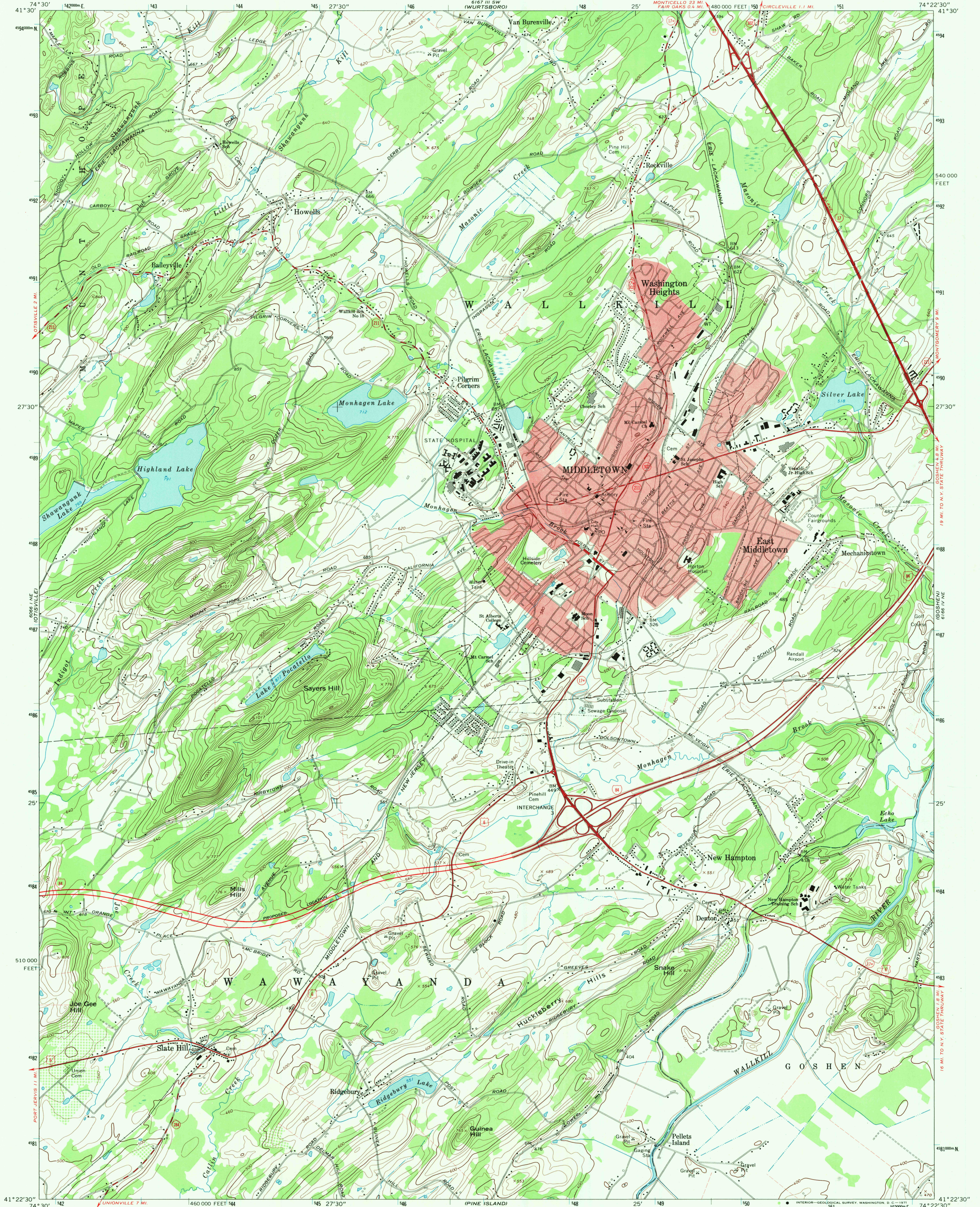


UNITED STATES
DEPARTMENT OF THE INTERIOR
GEOLOGICAL SURVEY

MIDDLETOWN QUADRANGLE
NEW YORK-ORANGE CO.
7.5 MINUTE SERIES (TOPOGRAPHIC)
NW/4 GOSHEN 15' QUADRANGLE



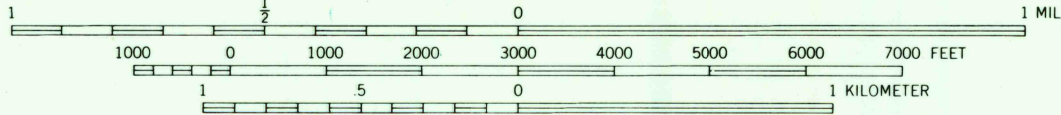
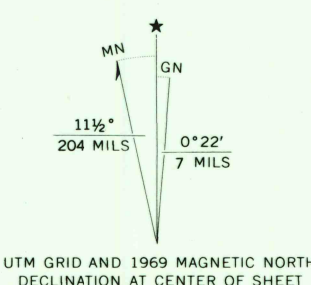
Mapped by the Army Map Service
Edited and published by the Geological Survey
Revised by the Geological Survey in cooperation with New York
Department of Transportation

Control by USGS and USC&GS

Topography by photogrammetric methods from aerial photographs
taken 1942. Field checked 1943. Revised from aerial
photographs taken 1968. Field checked 1969

Polyconic projection. 1927 North American datum
10,000-foot grid based on New York coordinate system, east zone
1000-meter Universal Transverse Mercator grid ticks,
zone 18, shown in blue

Fine red dashed lines indicate selected fence and field lines where
generally visible on aerial photographs. This information is unchecked
Red tint indicates areas in which only landmark buildings are shown



CONTOUR INTERVAL 20 FEET
DATUM IS MEAN SEA LEVEL



ROAD CLASSIFICATION	
Primary highway, all weather, hard surface	Light-duty road, all weather, improved surface
Secondary highway, all weather, hard surface	Unimproved road, fair or dry weather
Interstate Route	U. S. Route
	State Route

MIDDLETOWN, N. Y.
NW/4 GOSHEN 15' QUADRANGLE
N4122.5-W7422.5/7.5

1969

AMS 6166 IV NW-SERIES W821

FOR SALE BY U. S. GEOLOGICAL SURVEY, WASHINGTON, D. C. 20242
A FOLDER DESCRIBING TOPOGRAPHIC MAPS AND SYMBOLS IS AVAILABLE ON REQUEST

USGS
HISTORICAL FILE
TOPOGRAPHIC DIVISION

3/30
SEP 24 1971