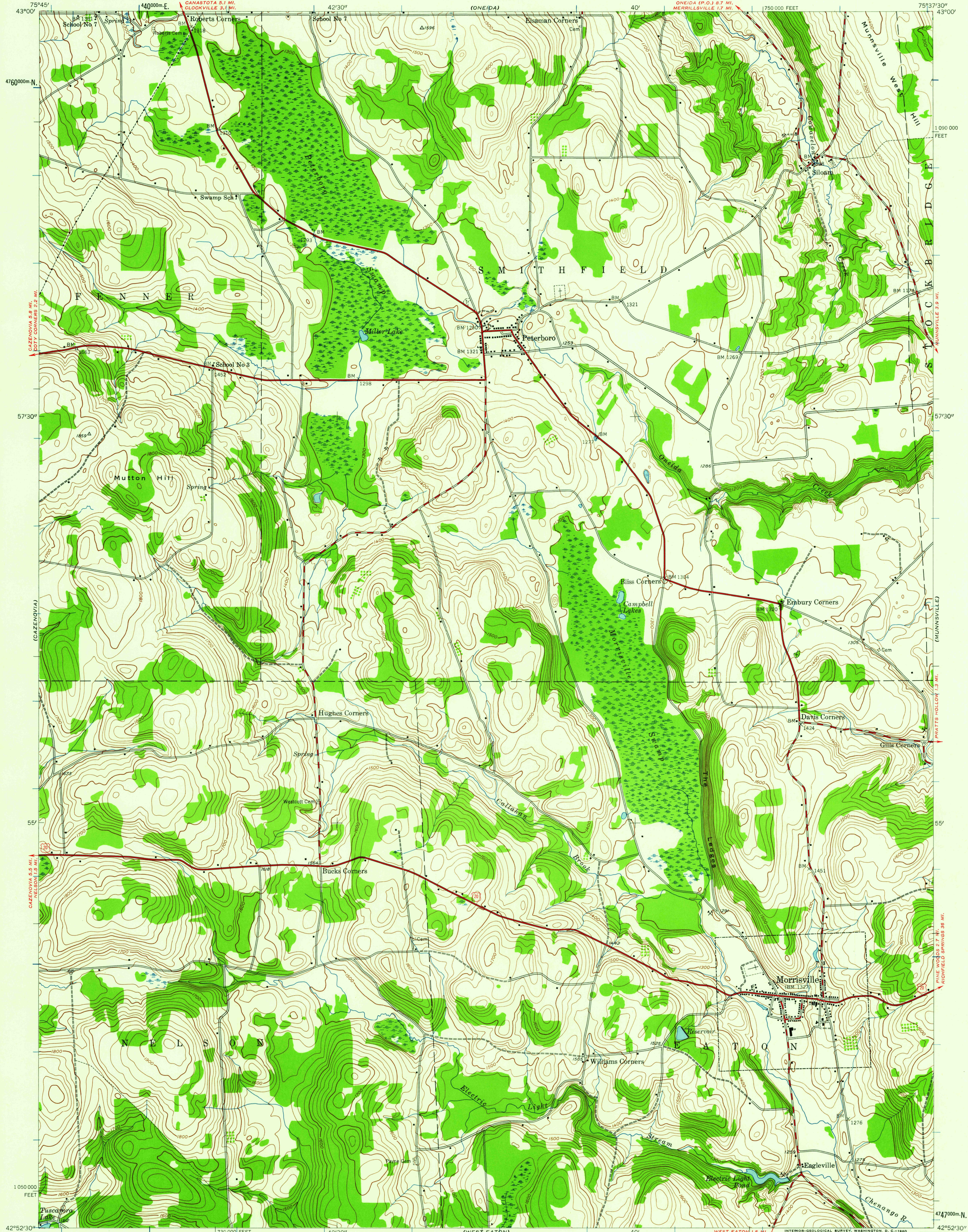


UNITED STATES
DEPARTMENT OF THE INTERIOR
GEOLOGICAL SURVEY

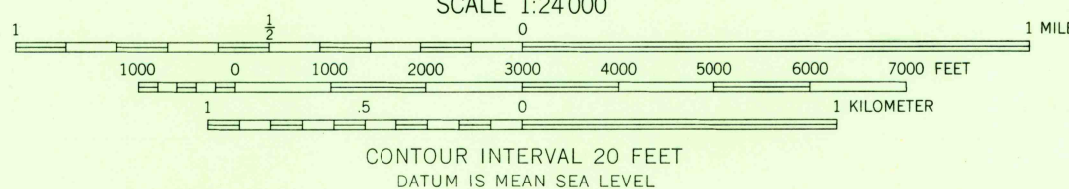
UNITED STATES
DEPARTMENT OF THE ARMY
CORPS OF ENGINEERS

MORRISVILLE QUADRANGLE
NEW YORK—MADISON CO.
7.5 MINUTE SERIES (TOPOGRAPHIC)
NW 1/4 MORRISVILLE 15' QUADRANGLE



Mapped by the Army Map Service
Published for civil use by the Geological Survey
Control by USGS, USC&GS, and TVA
Topography from aerial photographs by photogrammetric methods
Aerial photographs taken 1942. Field check 1943
Polyconic projection, 1927 North American datum
10,000-foot grid based on New York coordinate system, central zone
1000-meter Universal Transverse Mercator grid ticks,
zone 18, shown in blue

TRUE NORTH
MAGNETIC NORTH
APPROXIMATE MEAN
DECLINATION, 1943



USGS
Historical File
Topographic Division



ROAD CLASSIFICATION
Heavy-duty ——— Light-duty ———
Medium-duty ——— Unimproved dirt ———
U.S. Route

U.S.G.S.
FILE COPY

MORRISVILLE, N. Y.
NW 1/4 MORRISVILLE 15' QUADRANGLE
N 4252.5 — W 7537.5/7.5

1943

THIS MAP COMPLIES WITH NATIONAL MAP ACCURACY STANDARDS
FOR SALE BY U. S. GEOLOGICAL SURVEY, WASHINGTON 25, D. C.
A FOLDER DESCRIBING TOPOGRAPHIC MAPS AND SYMBOLS IS AVAILABLE ON REQUEST

MAR 10 1960