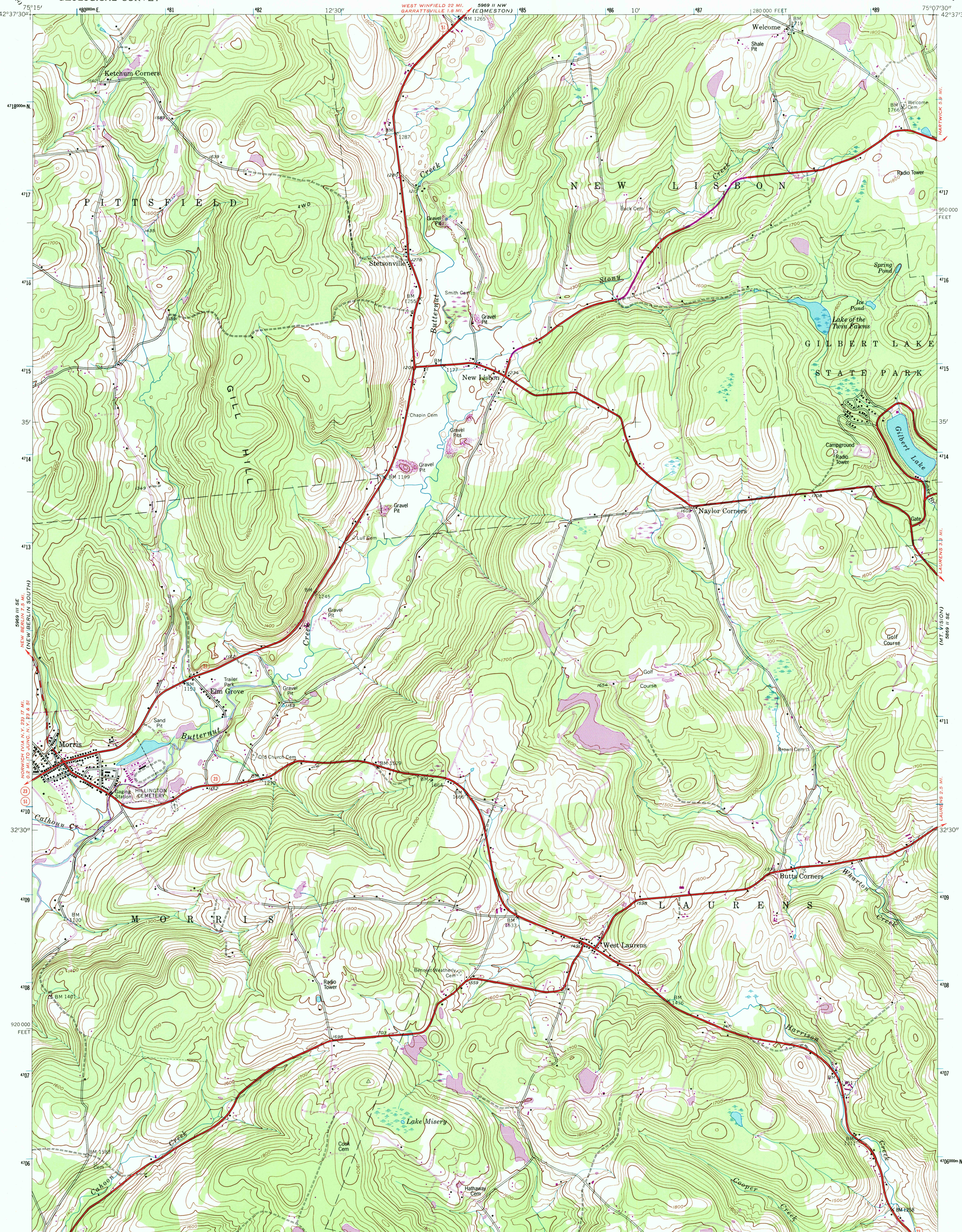


UNITED STATES
DEPARTMENT OF THE INTERIOR
GEOLOGICAL SURVEY

MORRIS QUADRANGLE
NEW YORK—OTSEGO CO.
7.5 MINUTE SERIES (TOPOGRAPHIC)



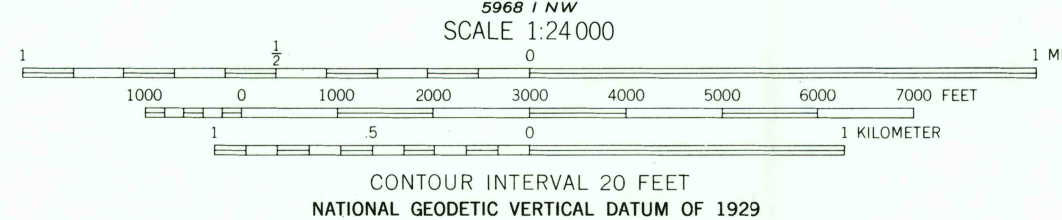
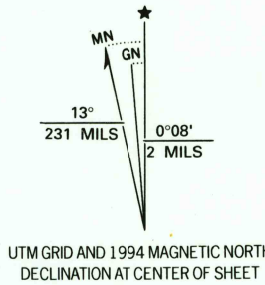
Map by the Army Map Service
Revised by the U.S. Geological Survey

Control by USGS, NOS/NOAA, and TVA
Topography by photogrammetric methods from aerial photographs
taken 1942. Field checked 1943

Projection and 10,000-foot grid ticks: New York coordinate
system, east zone (transverse Mercator)
1000-meter Universal Transverse Mercator grid ticks, zone 18, shown in blue
1927 North American Datum (NAD 27)

North American Datum of 1983 (NAD 83) is shown by dashed corner ticks
The values of the shift between NAD 27 and NAD 83 for 7.5-minute
intersections are given in USGS Bulletin 1875

There may be private inholdings within the boundaries of
the National or State reservations shown on this map

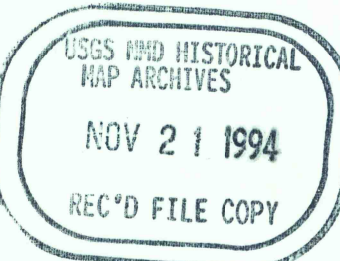


COMPLIES WITH U.S. GEOLOGICAL SURVEY STANDARDS FOR SPATIAL ACCURACY - CLASS 2
FOR SALE BY U.S. GEOLOGICAL SURVEY
DENVER, COLORADO 80225, OR RESTON, VIRGINIA 22092
A FOLDER DESCRIBING TOPOGRAPHIC MAPS AND SYMBOLS IS AVAILABLE ON REQUEST



ROAD CLASSIFICATION	
Primary highway, hard surface	Light-duty road, hard or improved surface
Secondary highway, hard surface	Unimproved road
Interstate Route	U. S. Route
	State Route

MORRIS, N.Y.
42075-E2T-024
1943
REVISED 1994
DMA 5969 II SW-SERIES V821



Revisions shown in purple and woodland compiled by the
U.S. Geological Survey from aerial photographs taken 1988
and other sources. Field checked 1989. Map edited 1994
Information shown in purple may not meet USGS content
standards and may conflict with previously mapped contours