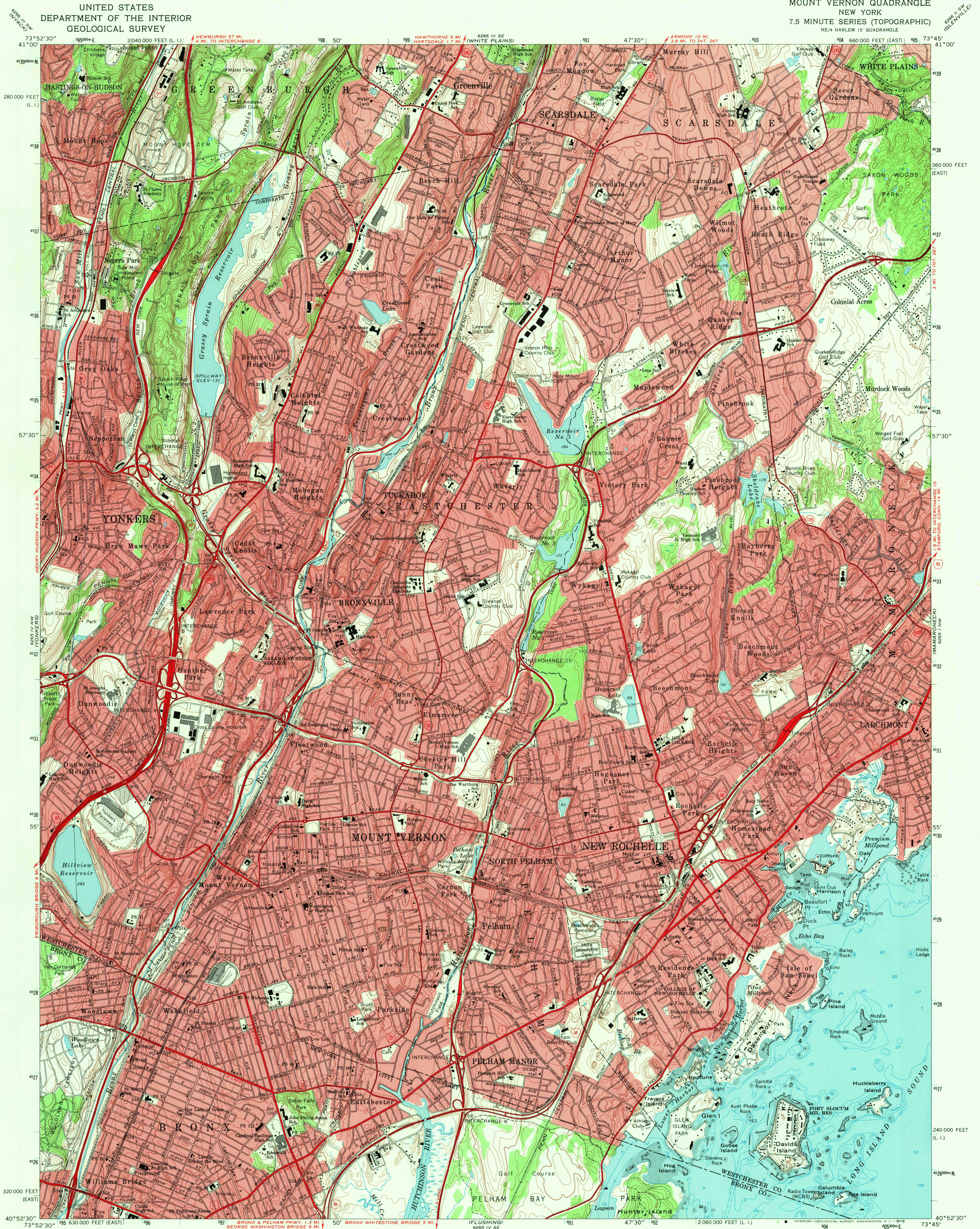


UNITED STATES
DEPARTMENT OF THE INTERIOR
GEOLOGICAL SURVEY

MOUNT VERNON QUADRANGLE
NEW YORK
7.5 MINUTE SERIES (TOPOGRAPHIC)
NE 1/4 HARLEM 15' QUADRANGLE

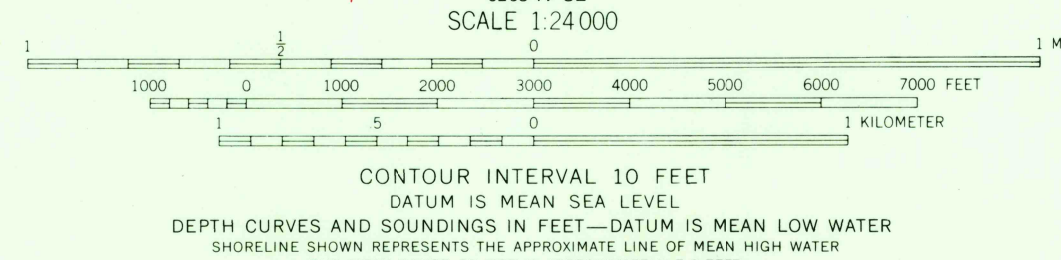
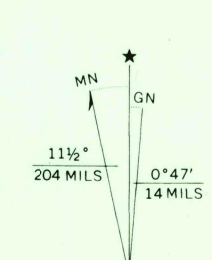


Mapped, edited, and published by the Geological Survey
Revised in cooperation with New York Department of
Transportation

Control by USGS, USC&GS, and USCE
Topography by photogrammetric methods from aerial photographs
taken 1953-1954 and planetable surveys 1956. Revised from
aerial photographs taken 1966. Field checked 1966

Selected hydrographic data compiled from USC&GS Charts 222 (1963)
and 223 (1965). This information is not intended for navigational purposes
Polyconic projection. 1927 North American datum
10,000-foot grids based on New York coordinate system, east
and Long Island zones
1000-meter Universal Transverse Mercator grid ticks, zone 18, shown in blue

Red tint indicates areas in which only landmark buildings are shown



USGS
Historical File
Topographic Division

ROAD CLASSIFICATION
Heavy-duty ——— Light-duty ———
Unimproved dirt ———
Interstate Route ——— U.S. Route ——— State Route ———

U.S.G.S.
FILE COPY
TOPOGRAPHIC DIVISION

MOUNT VERNON, N. Y.
NE 1/4 HARLEM 15' QUADRANGLE
N4052.5—W7345/7.5

1966

AMS 6265 IV NE—SERIES V821