

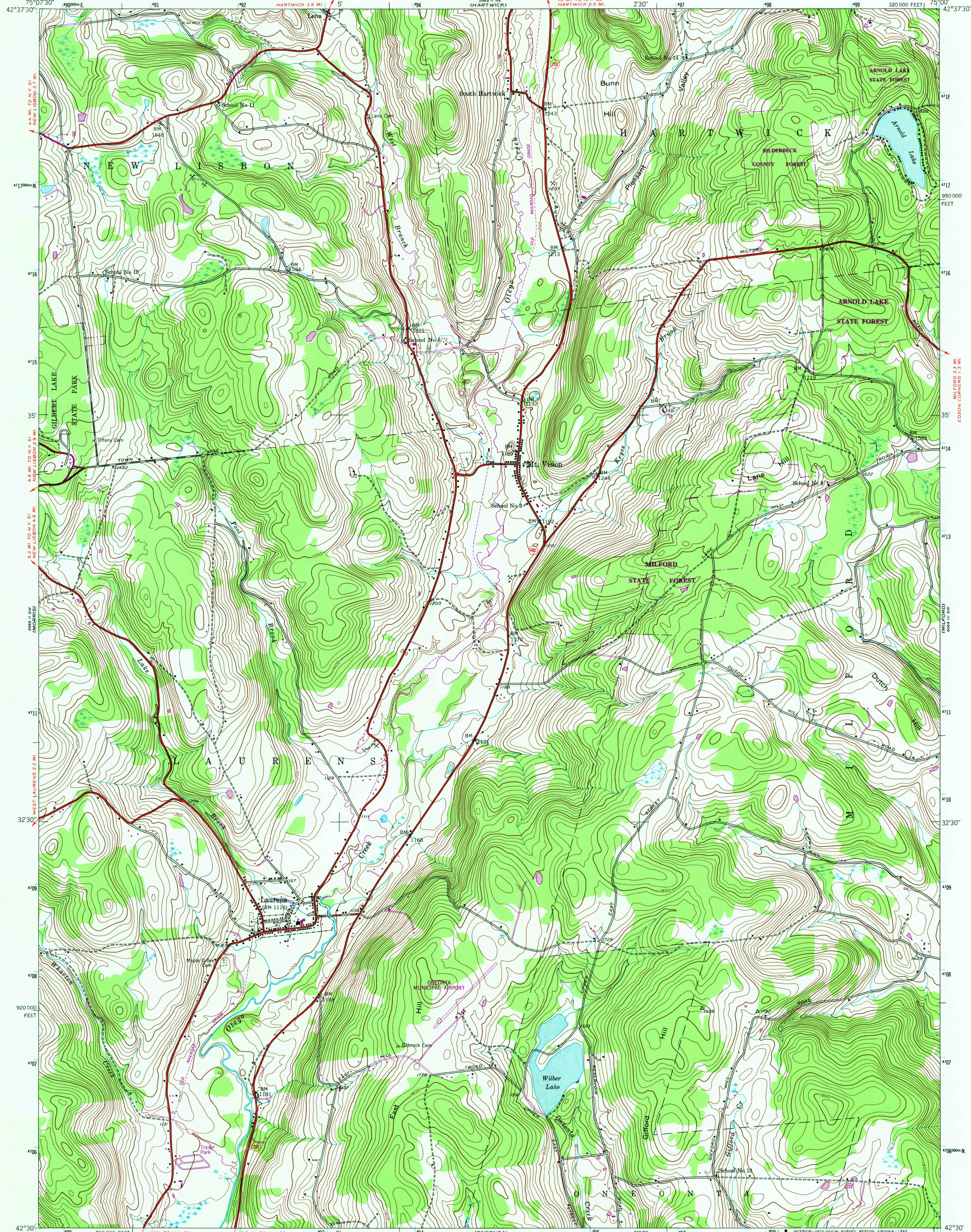
5969 II NW  
(EDGESTOWN)

UNITED STATES  
DEPARTMENT OF THE INTERIOR  
GEOLOGICAL SURVEY

UNITED STATES  
DEPARTMENT OF THE ARMY  
CORPS OF ENGINEERS

MT VISION QUADRANGLE  
NEW YORK-OTSEGO CO.  
7.5 MINUTE SERIES (TOPOGRAPHIC)

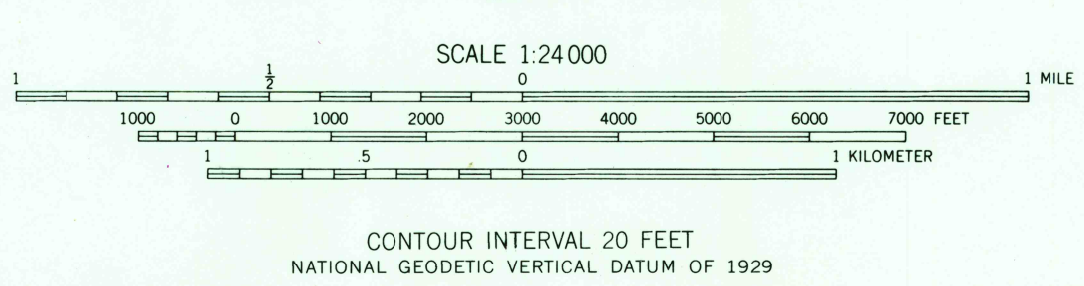
5969 II NW  
(COOPERSTOWN)



5969 II NW  
(OTSEGO)

Mapped by the Army Map Service  
Published for civil use by the Geological Survey  
Control by USGS, NOS/NOAA, and Tennessee Valley Authority  
Topography by photogrammetric methods from aerial  
photographs taken 1942. Field checked 1943  
Polyconic projection. 10,000-foot grid ticks based on New York  
coordinate system, east zone. 1000-meter Universal Transverse  
Mercator grid ticks, zone 18, shown in blue. 1927 North  
American Datum. To place on the predicted North American  
Datum 1983 move the projection lines 4 meters south and 31  
meters west as shown by dashed corner ticks  
There may be private inholdings within the boundaries  
of the National or State reservations shown on this map

Revisions shown in purple and woodland compiled  
by the Geological Survey from aerial photographs  
taken 1981 and other sources. This information  
not field checked. Map edited 1982



ROAD CLASSIFICATION  
Heavy-duty ——— Light-duty ———  
Medium-duty ——— Unimproved dirt ———  
State Route

MT VISION, N. Y.  
N4230-W7500/7.5  
1943  
PHOTOREVISED 1982  
DMA 5969 II SE-SERIES V821

JUN 27 1986  
RETURN TO:  
USGS AND HISTORICAL MAP ARCHIVES  
2522