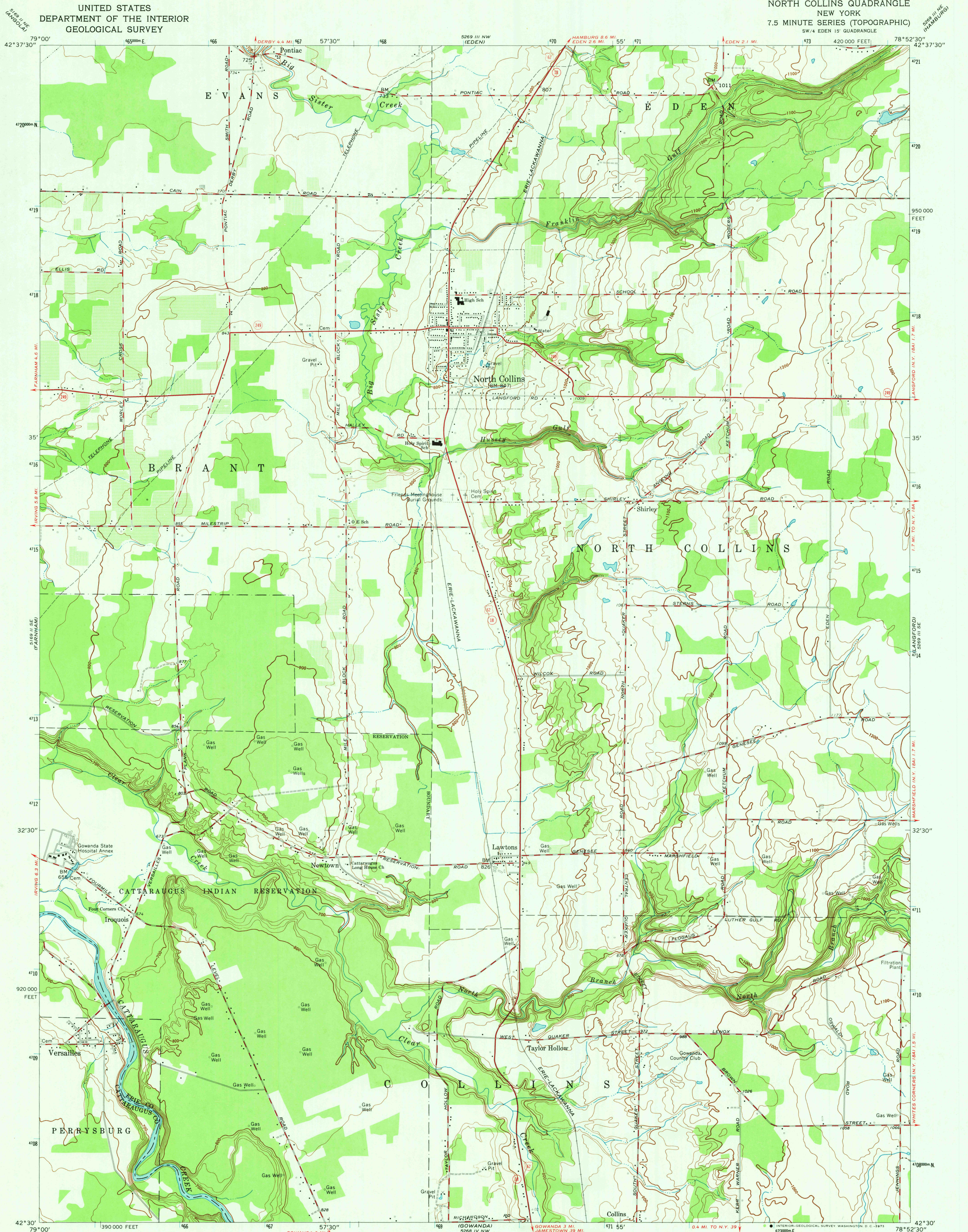
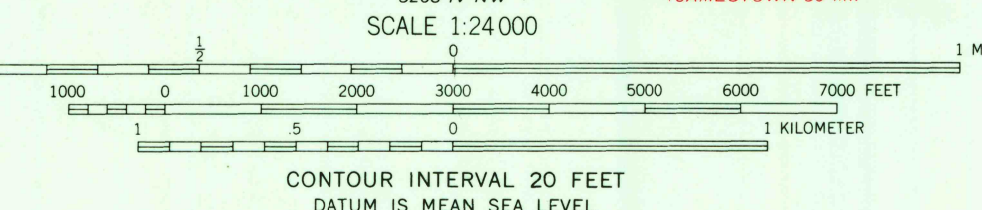
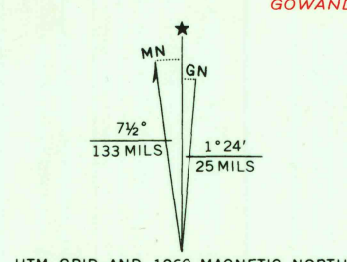


UNITED STATES
DEPARTMENT OF THE INTERIOR
GEOLOGICAL SURVEY

NORTH COLLINS QUADRANGLE
NEW YORK
7.5 MINUTE SERIES (TOPOGRAPHIC)
SW 1/4 EDEN 15' QUADRANGLE



Mapped by the Army Map Service
Edited and published by the Geological Survey
Control by USGS, USC&GS, and USCE
Topography by photogrammetric methods from aerial
photographs taken 1942. Field checked 1943
Culture revised by the Geological Survey 1960
Polyconic projection. 1927 North American datum
10,000-foot grid based on New York coordinate system,
west zone
1000-meter Universal Transverse Mercator grid ticks,
zone 17, shown in blue



ROAD CLASSIFICATION
Heavy-duty ——— Light-duty ———
Medium-duty ——— Unimproved dirt ———
U.S. Route ——— State Route ———



NORTH COLLINS, N. Y.
SW 1/4 EDEN 15' QUADRANGLE
N4230-W7852.5/7.5
1960
AMS 5269 III SW-SERIES V821

THIS MAP COMPLIES WITH NATIONAL MAP ACCURACY STANDARDS
FOR SALE BY U. S. GEOLOGICAL SURVEY, WASHINGTON, D. C. 20242
A FOLDER DESCRIBING TOPOGRAPHIC MAPS AND SYMBOLS IS AVAILABLE ON REQUEST

JAN 29 1973

3175