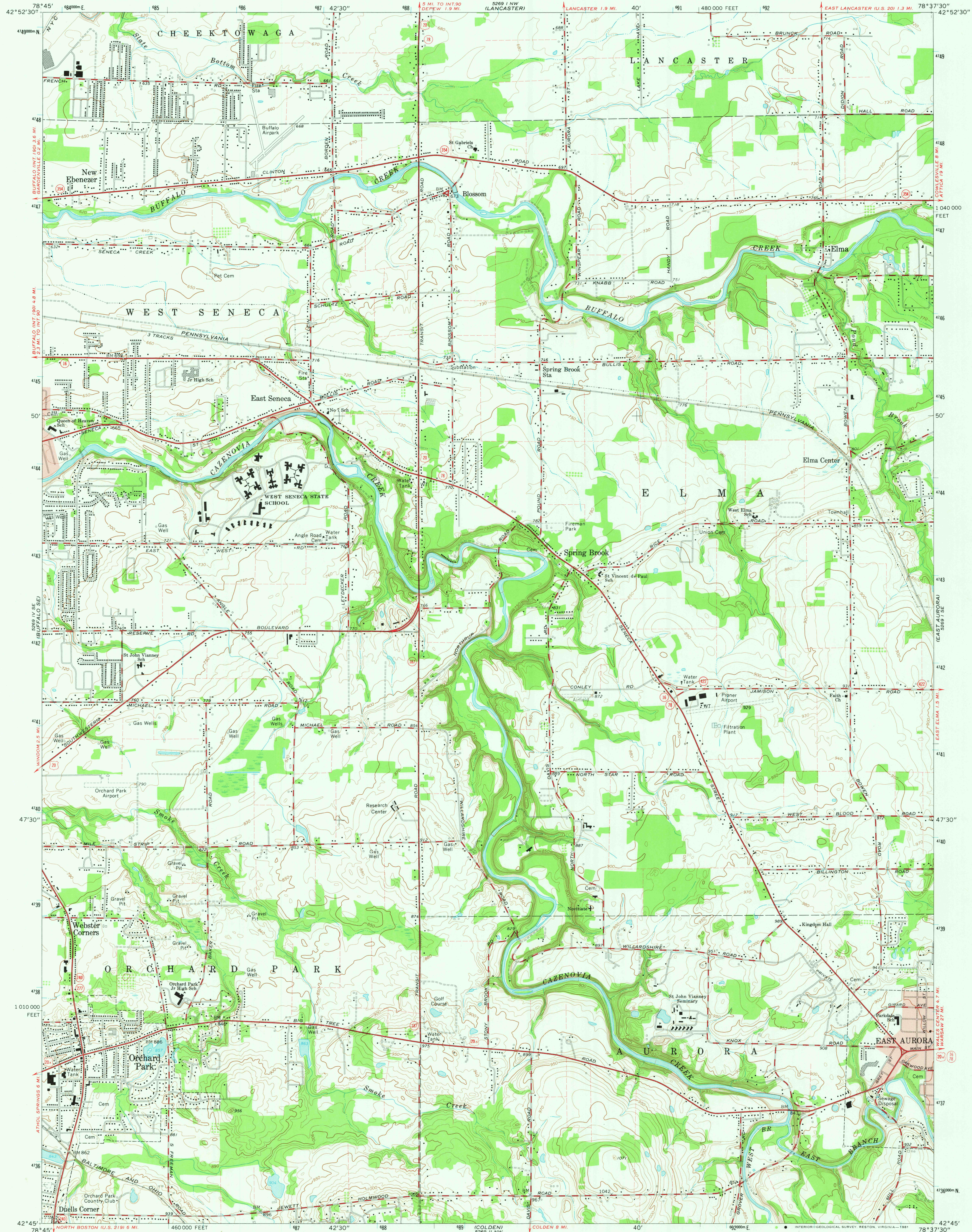
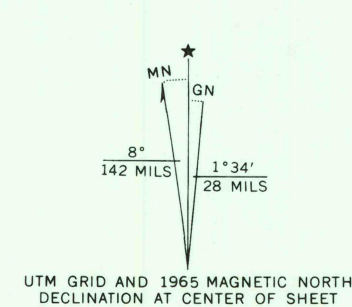


UNITED STATES
DEPARTMENT OF THE INTERIOR
GEOLOGICAL SURVEY

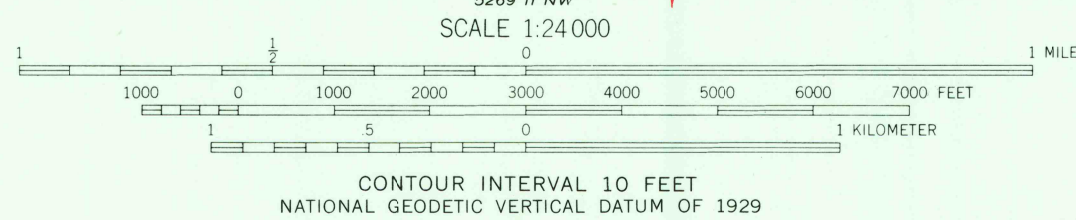
ORCHARD PARK QUADRANGLE
NEW YORK-ERIE CO.
7.5 MINUTE SERIES (TOPOGRAPHIC)



Mapped, edited, and published by the Geological Survey
in cooperation with New York Department of Public Works
Control by USGS, USC&GS, and USCE
Planimetry compiled by U. S. Corps of Engineers
from aerial photographs taken 1942. Topography by
planimetric surveys 1948. Revised 1965
Polyconic projection. 10,000-foot grid ticks based on New York
coordinate system, west zone. 1000-meter Universal Transverse
Mercator grid ticks, zone 17, shown in blue. 1927 North
American Datum. To place on the predicted North American
Datum 1983 move the Projection lines 2 meters south and
21 meters west as shown by dashed corner ticks
Fine red dashed lines indicate selected fence and field lines where
generally visible on aerial photographs. This information is unchecked
Red tint indicates areas in which only landmark buildings are shown



There may be private inholdings within
the boundaries of National or State
reservations shown on this map



THIS MAP COMPLIES WITH NATIONAL MAP ACCURACY STANDARDS
FOR SALE BY U. S. GEOLOGICAL SURVEY, RESTON, VIRGINIA 22092
A FOLDER DESCRIBING TOPOGRAPHIC MAPS AND SYMBOLS IS AVAILABLE ON REQUEST



ROAD CLASSIFICATION
Heavy-duty ——— Light-duty ———
Medium-duty ——— Unimproved dirt ———
U. S. Route ——— State Route ———

ORCHARD PARK, N. Y.
N4245—W7837.5/7.5

1965
AMS 5269 I SW—SERIES V821

RETURN TO:
USGS NMD HISTORICAL MAP ARCHIVES

DEC 4 1981