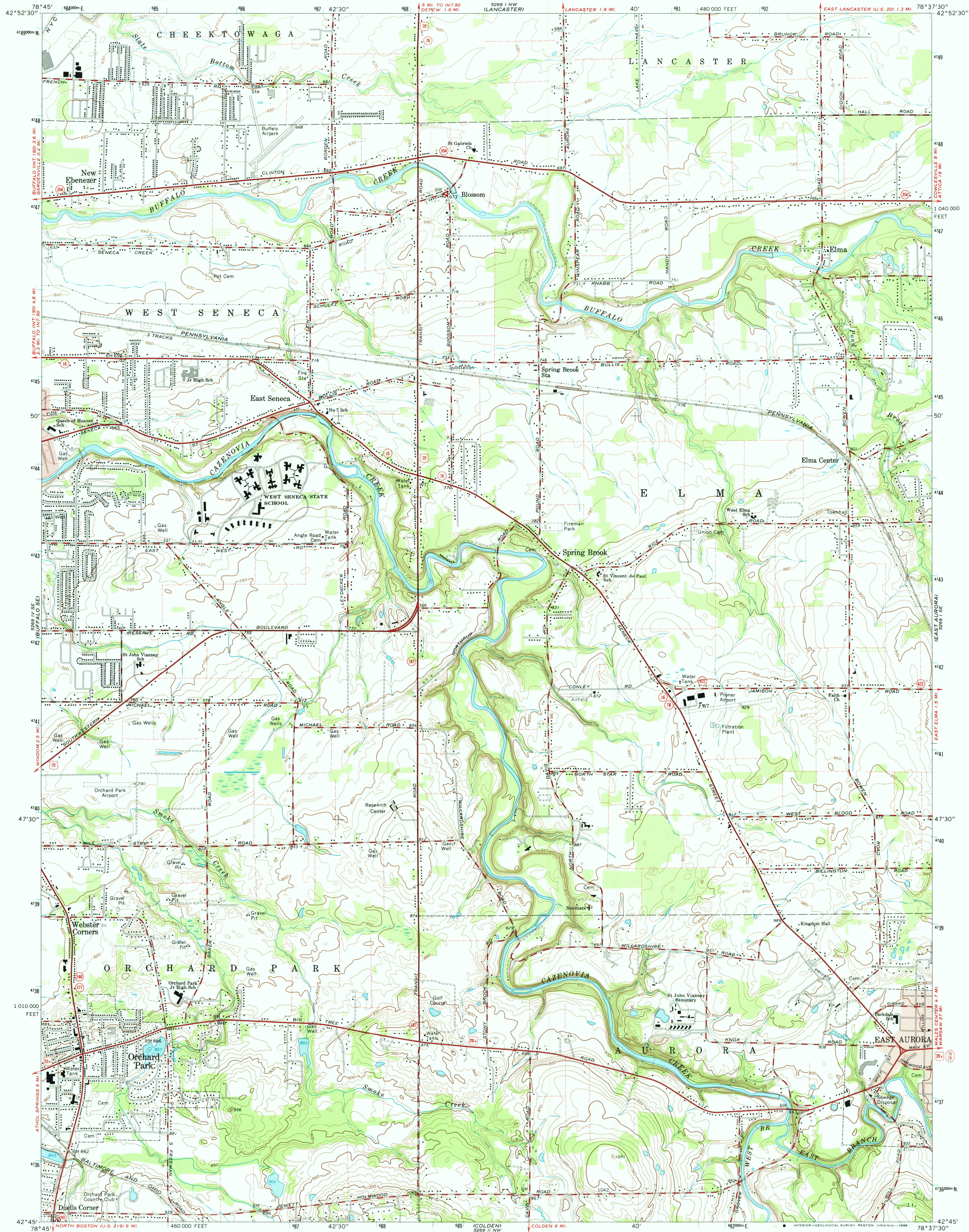
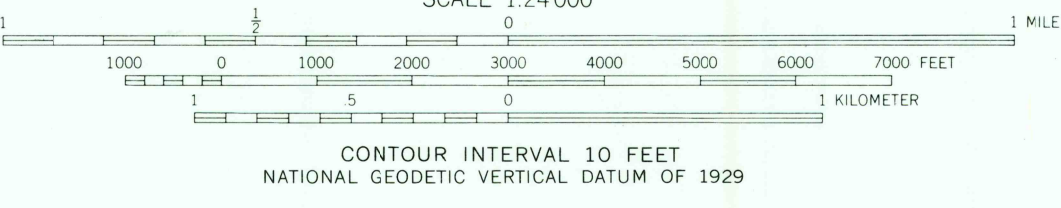
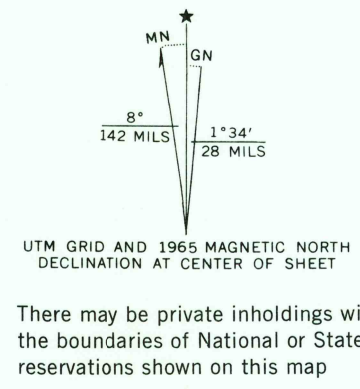


UNITED STATES
DEPARTMENT OF THE INTERIOR
GEOLOGICAL SURVEY

ORCHARD PARK QUADRANGLE
NEW YORK—ERIE CO.
7.5 MINUTE SERIES (TOPOGRAPHIC)



Mapped, edited, and published by the Geological Survey
in cooperation with New York Department of Public Works
Control by USGS, USC&GS, and USCE
Planimetry compiled by U. S. Corps of Engineers
from aerial photographs taken 1942. Topography by
planimetry surveys 1948. Revised 1965
Polyconic projection. 10,000-foot grid ticks based on New York
coordinate system, west zone. 1000-meter Universal Transverse
Mercator grid ticks, zone 17, shown in blue. 1927 North
American Datum. To place on the predicted North American
Datum 1983 move the Projection lines 2 meters south and
21 meters west as shown by dashed corner ticks
Fine red dashed lines indicate selected fence and field lines where
generally visible on aerial photographs. This information is unchecked
Red tint indicates areas in which only landmark buildings are shown



THIS MAP COMPLIES WITH NATIONAL MAP ACCURACY STANDARDS
FOR SALE BY U. S. GEOLOGICAL SURVEY
DENVER, COLORADO 80225, OR RESTON, VIRGINIA 22092
A FOLDER DESCRIBING TOPOGRAPHIC MAPS AND SYMBOLS IS AVAILABLE ON REQUEST



ROAD CLASSIFICATION
Heavy-duty ——— Light-duty ———
Medium-duty ——— Unimproved dirt ———
U. S. Route ——— State Route ———

ORCHARD PARK, N. Y.
42078-G6-TF-024
1965
DMA 5269 1 SW—SERIES V821

USGS AND HISTORICAL MAP
APR 13 1968
REGD FILE COPY