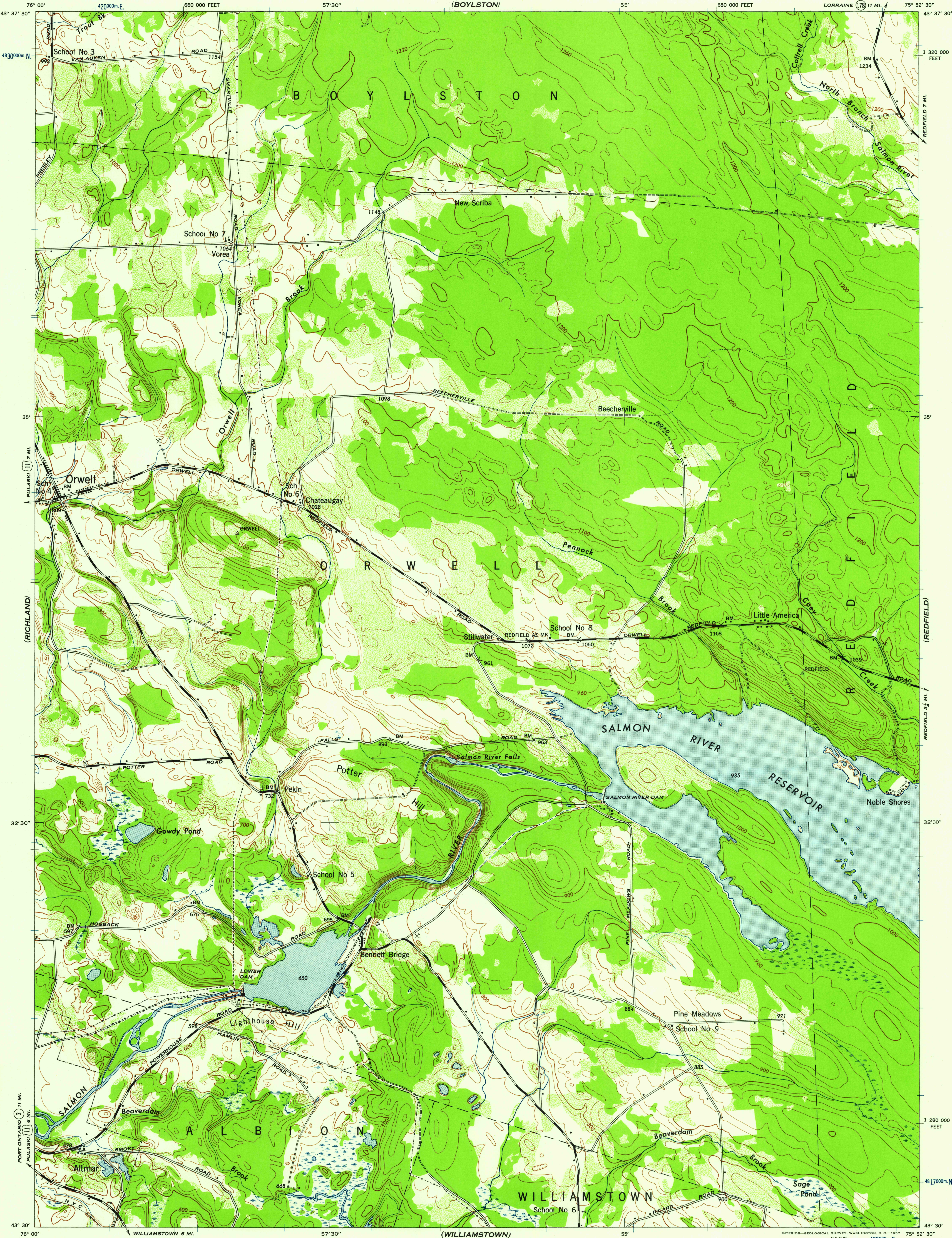


NEW YORK
OSWEGO COUNTY

WAR DEPARTMENT
CORPS OF ENGINEERS, U. S. ARMY

ORWELL QUADRANGLE
7 1/2 - MINUTE SERIES



Mapped by Tennessee Valley Authority under direction of the
Chief of Engineers, U. S. Army, 1943.
Control by USCGS, USGS, and TVA.
Topography by U. S. Geological Survey and Tennessee Valley Authority
by Stereophotogrammetric methods (Multiplex).
Field completion surveys by TVA.
Wide-angle photography for TVA, 1942.
Polyconic projection, 1927 North American datum.

ROAD CLASSIFICATION
1943
Dependable hard-surface,
heavy-duty road. ——— U. S. Route (35)
Secondary, hard-surface,
all-weather road. ——— State Route (126)
More than two lanes indicated by tick along road with tick at point of change. ——— 3 LANE 4 LANE
Loose-surface graded,
dry-weather road. ———
Dirt road. ———

Scale 1:24,000
1 000 500 0 1000 2000 Yards
1 Mile
CONTOUR INTERVAL 20 FEET
DATUM IS MEAN SEA LEVEL

ONE THOUSAND METER UNIVERSAL TRANSVERSE MERCATOR GRID TICKS, ZONE 18, SHOWN IN BLUE.
TEN THOUSAND FOOT GRID BASED ON NEW YORK PLANE COORDINATE SYSTEM, CENTRAL ZONE.
REPRINTED FROM MILITARY EDITION FOR CIVIL USE
FOR SALE BY U. S. GEOLOGICAL SURVEY, WASHINGTON 25, D. C.
A FOLDER DESCRIBING TOPOGRAPHIC MAPS AND SYMBOLS IS AVAILABLE ON REQUEST

USGS
Historical File
Topographic Division

U.S.G.S.
FILE COPY
TOPOGRAPHIC DIVISION

WOODLAND CLASSIFICATION
Dense woodland
Dense brush
Scattered brush and trees
Orchard
Vineyard

113°
TRUE NORTH
MAGNETIC NORTH
APPROXIMATE MEAN
DECLINATION, 1943

ORWELL, N. Y.
N4330-W7552.5/7.5
EDITION OF 1943

JAN 23 1969

1940