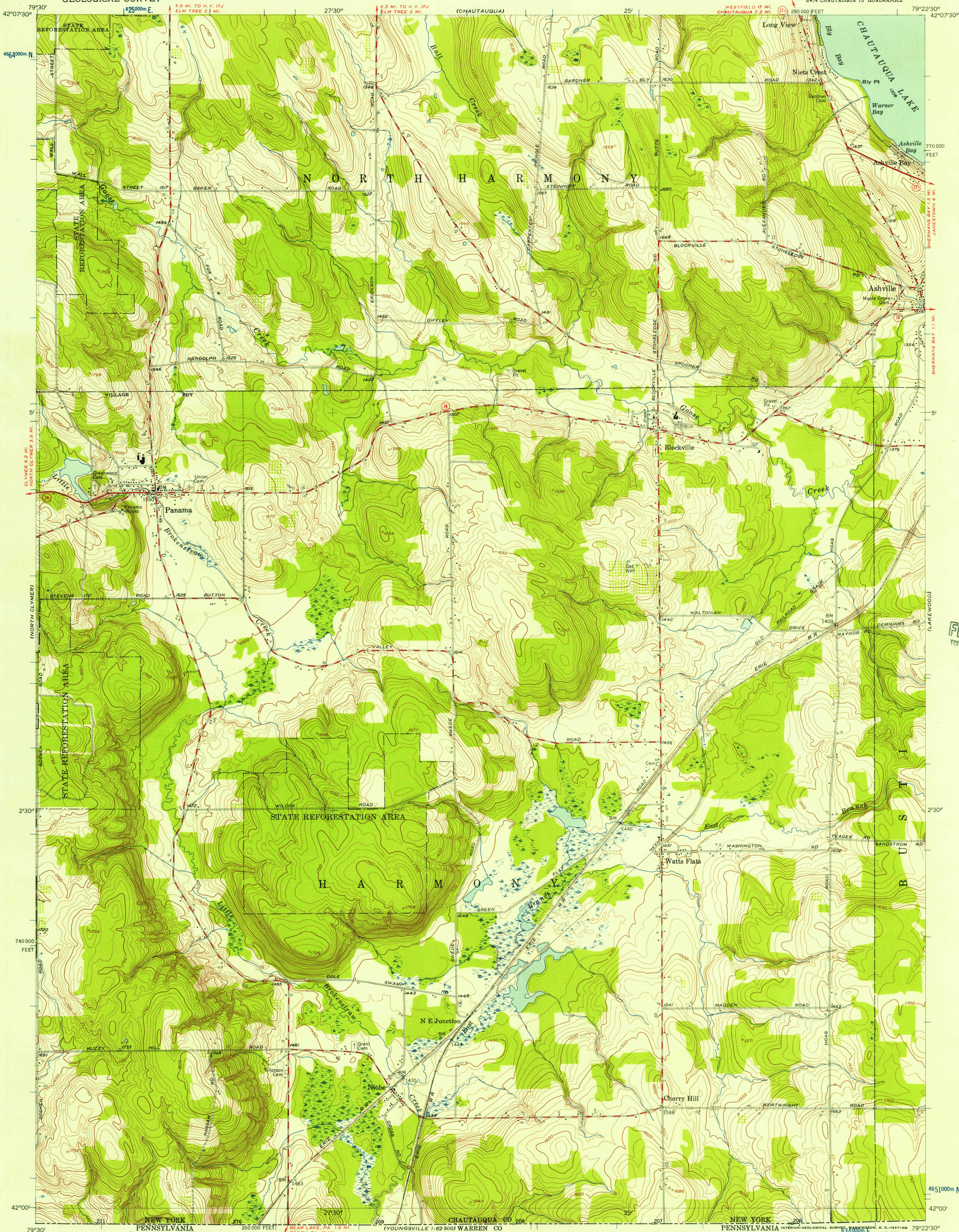


UNITED STATES
DEPARTMENT OF THE INTERIOR
GEOLOGICAL SURVEY

PANAMA QUADRANGLE
NEW YORK—CHAUTAUQUA CO.
7.5 MINUTE SERIES (TOPOGRAPHIC)
SW/4 CHAUTAUQUA 15' QUADRANGLE



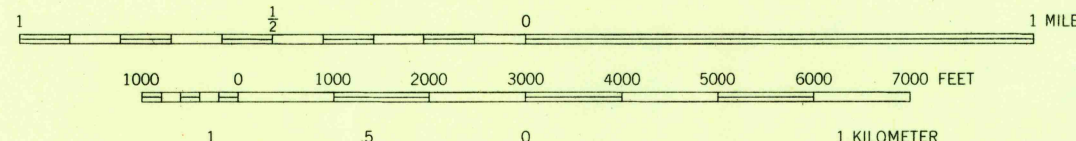
U.S.G.S.
FILE COPY
TOPOGRAPHIC DIVISION

U.S.G.S.
FILE COPY
TOPOGRAPHIC DIVISION

Mapped, edited, and published by the Geological Survey
Control by USGS and USC&GS
Topography from aerial photographs by photogrammetric methods. Aerial photographs taken 1954. Field check 1954
Polyconic projection. 1927 North American datum
10,000-foot grid based on New York coordinate system, west zone
1000 meter Universal Transverse Mercator Grid ticks, zone 18, shown in blue
Unchecked elevations are shown in brown

APPROXIMATE MEAN
DECLINATION, 1954

SCALE 1:24000



CONTOUR INTERVAL 10 FEET
DATUM IS MEAN SEA LEVEL

USGS
Historical File
Topographic Division



ROAD CLASSIFICATION
Heavy-duty ——— Light-duty ———
Medium-duty ——— Unimproved dirt ———
U.S. Route ——— State Route ———

PANAMA, N. Y.
SW/4 CHAUTAUQUA 15' QUADRANGLE
N 4200—W 7922.5/7.5
1954

FEB 5 1957

3150