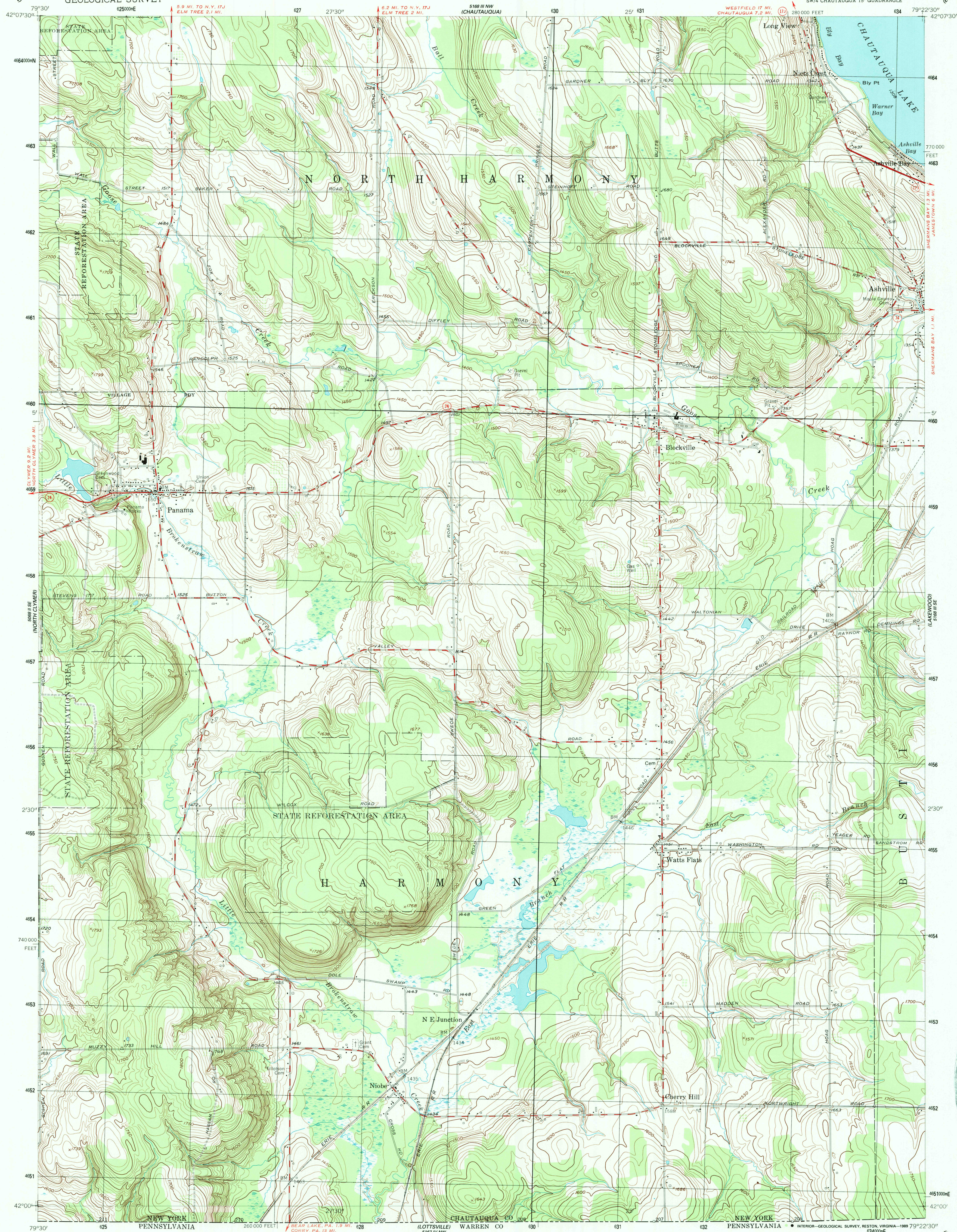


UNITED STATES
DEPARTMENT OF THE INTERIOR
GEOLOGICAL SURVEY

PANAMA QUADRANGLE
NEW YORK-CHAUTAUQUA CO.
7.5 MINUTE SERIES (TOPOGRAPHIC)
SW 1/4 CHAUTAUQUA 15' QUADRANGLE



Mapped, edited, and published by the Geological Survey

Control by USGS and USC&GS

Topography from aerial photographs by photogrammetric methods. Aerial photographs taken 1954. Field check 1954

Polyconic projection. 1927 North American datum

10,000-foot grid based on New York coordinate system, west zone

1000 meter Universal Transverse Mercator Grid ticks, zone 18, shown in blue

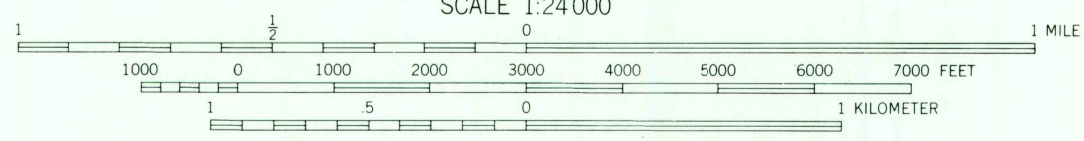
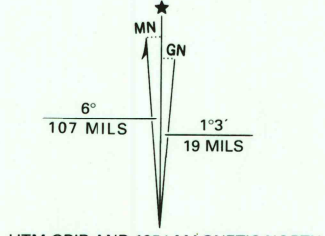
Unchecked elevations are shown in brown

To place on the predicted North American Datum 1983

move the projection lines 2 meters south and 20 meters west as shown by dashed corner ticks

Map photoinspected 1976

No major culture or drainage changes observed



CONTOUR INTERVAL 10 FEET

NATIONAL GEODETIC VERTICAL DATUM OF 1929

THIS MAP COMPLIES WITH NATIONAL MAP ACCURACY STANDARDS

FOR SALE BY U.S. GEOLOGICAL SURVEY

DENVER, COLORADO 80225, OR RESTON, VIRGINIA 22092

A FOLDER DESCRIBING TOPOGRAPHIC MAPS AND SYMBOLS IS AVAILABLE ON REQUEST

ROAD CLASSIFICATION
Heavy-duty ——— Light-duty ———
Medium-duty ——— Unimproved dirt ———
U. S. Route ——— State Route ———



PANAMA, N. Y.

SW 1/4 CHAUTAUQUA 15' QUADRANGLE

42079-44-1F-024

1954

PHOTOINSPECTED 1976

DMA 5168 III SW-SERIES V821

USGS NHD HISTORICAL MAP
SEP 13 1989
REC'D FILE COPY