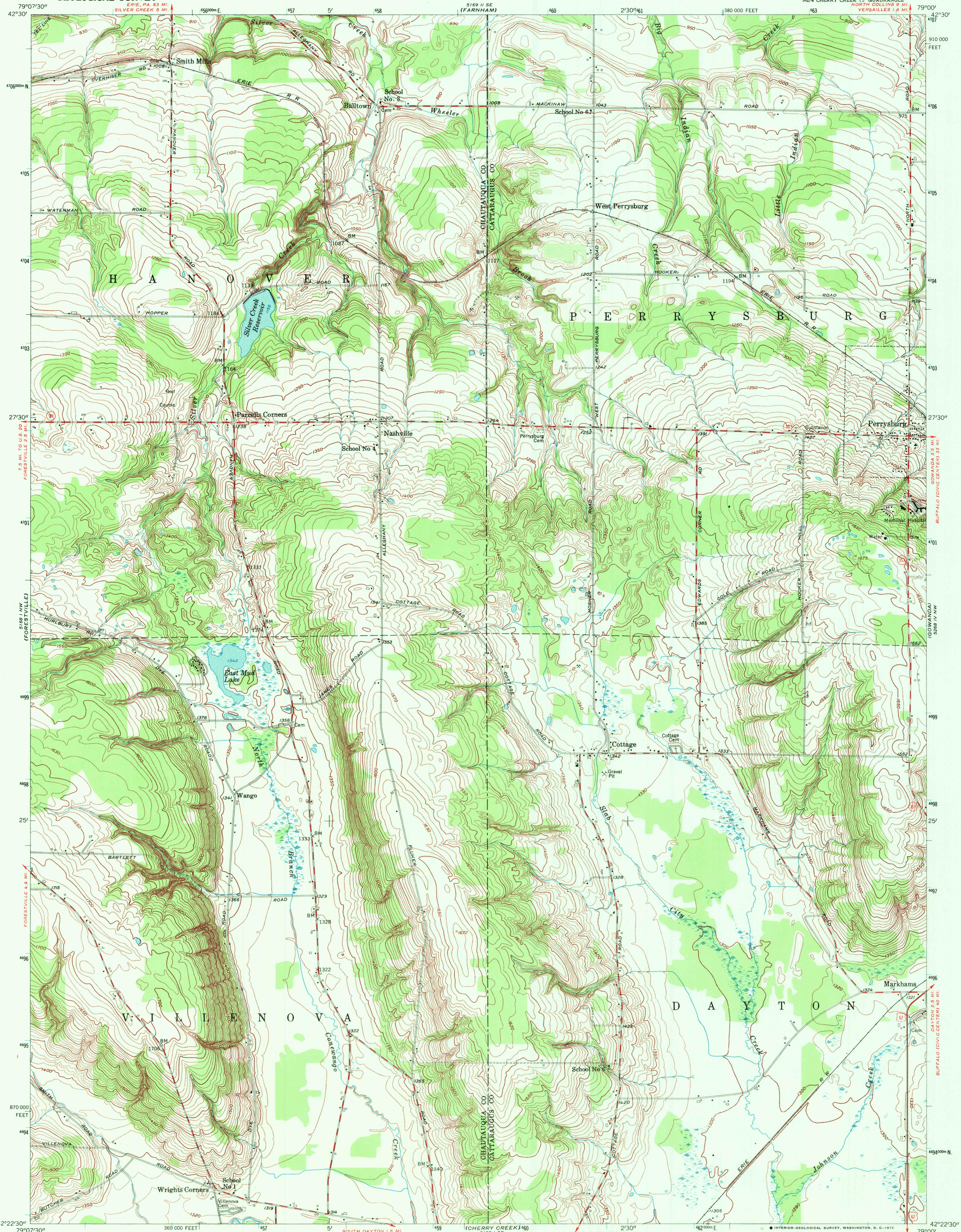
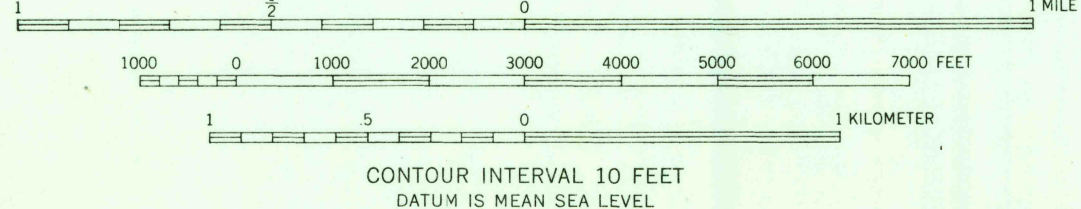
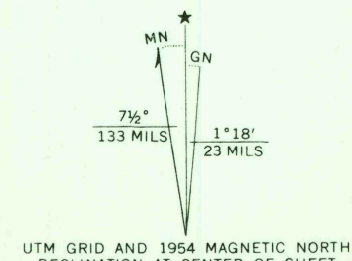


UNITED STATES
DEPARTMENT OF THE INTERIOR
GEOLOGICAL SURVEY

PERRYSBURG QUADRANGLE
NEW YORK
7.5 MINUTE SERIES (TOPOGRAPHIC)



Mapped, edited, and published by the Geological Survey
Control by USGS, USC&GS, USED, and USLS
Topography from aerial photographs by photogrammetric methods.
Aerial photographs taken 1952. Field check 1954
Polyconic projection. 1927 North American datum
10,000-foot grid based on New York coordinate system,
west zone
Unchecked elevations are shown in brown
1000-meter Universal Transverse Mercator grid ticks,
zone 17, shown in blue



ROAD CLASSIFICATION
Heavy duty ——— Light duty ———
Medium duty ——— Unimproved dirt ———
U. S. Route ——— State Route ———

PERRYSBURG, N. Y.
NE 1/4 CHERRY CREEK 15' QUADRANGLE
N 4222.5 - W 7900/7.5

1954
AMS 5168 I NE-SERIES V821

JUL 3 1972

2240