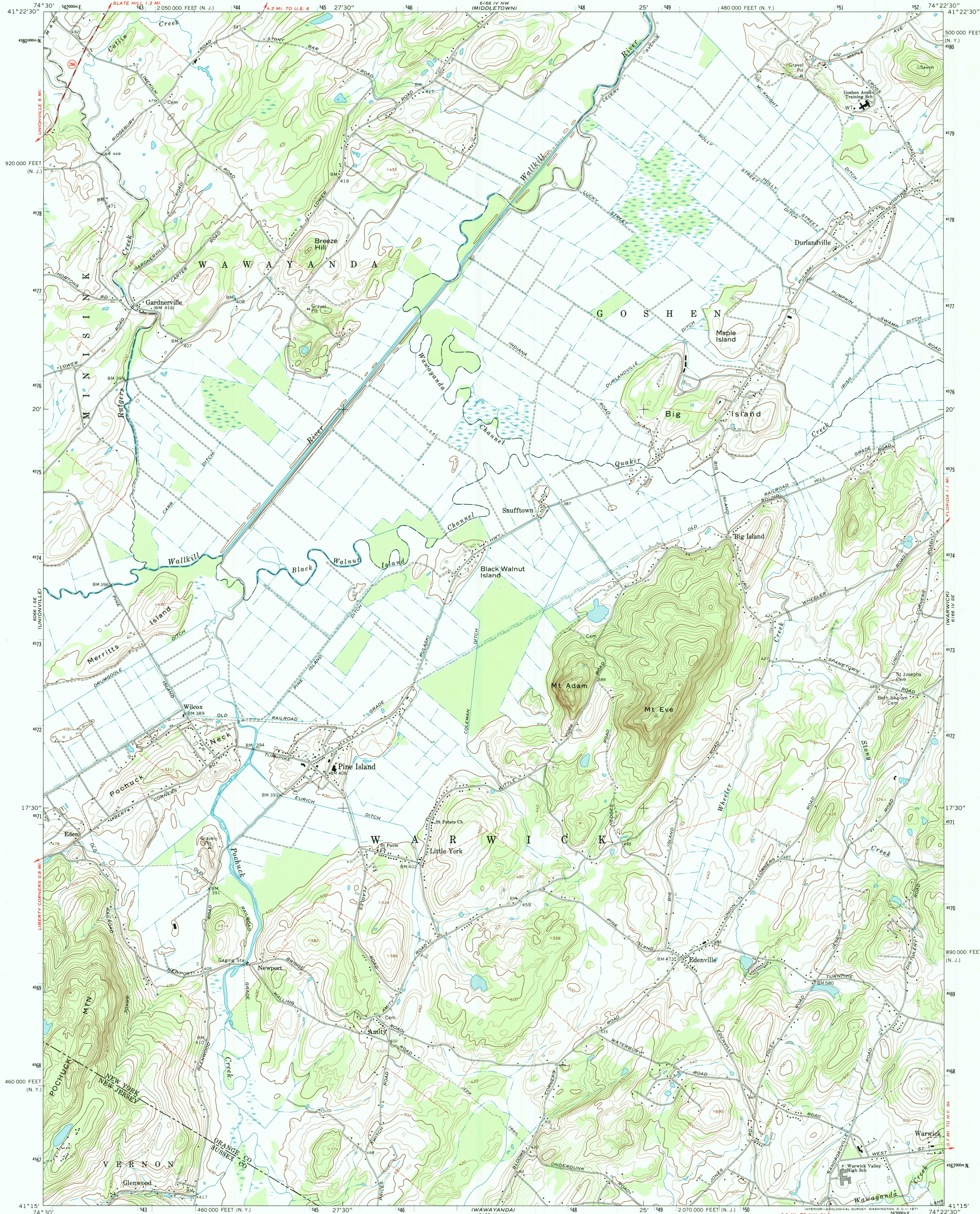


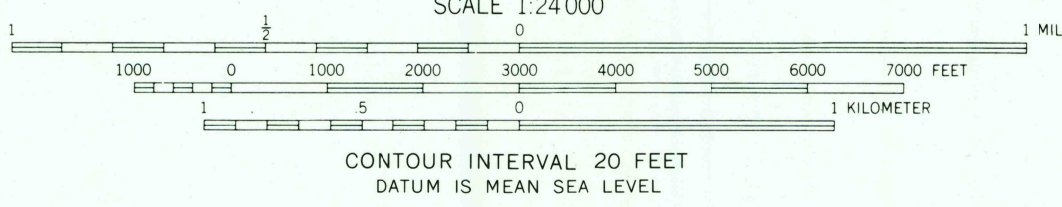
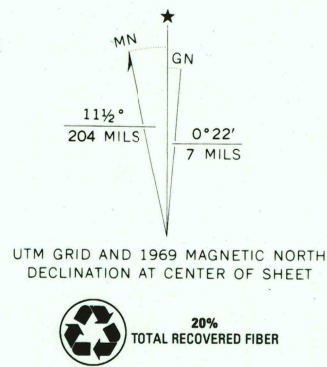
UNITED STATES
DEPARTMENT OF THE INTERIOR
GEOLOGICAL SURVEY

PINE ISLAND QUADRANGLE
NEW YORK-NEW JERSEY
7.5 MINUTE SERIES (TOPOGRAPHIC)

SW/4 GOSHEN 15' QUADRANGLE



Maped by the Army Map Service
Edited and published by the Geological Survey
Revised by the Geological Survey in cooperation with New York
Department of Transportation
Control by USGS and USC&GS
Topography by photogrammetric methods from aerial photographs
taken 1942. Field checked 1943. Revised from aerial
photographs taken 1968. Field checked 1969
Polyconic projection. 1927 North American datum
10,000-foot grid based on New York coordinate system, east zone
1000-meter Universal Transverse Mercator grid ticks, zone 18,
shown in blue
Fine red dashed lines indicate selected fence and field lines where
generally visible on aerial photographs. This information is unchecked



FOR SALE BY U. S. GEOLOGICAL SURVEY, WASHINGTON, D. C. 20242
A FOLDER DESCRIBING TOPOGRAPHIC MAPS AND SYMBOLS IS AVAILABLE ON REQUEST



ROAD CLASSIFICATION
Secondary highway, all weather, Light-duty road, all weather,
hard surface
Unimproved road, fair or dry
weather
RECEIVED State Route

FEB 29 2000
USGS NMD
HISTORICAL MAP ARCHIVES
PINE ISLAND, N. Y.-N. J.
SW/4 GOSHEN 15' QUADRANGLE
N4115-W7422.5/7.5
1969
AMS 6166 IV SW-SERIES V821

