

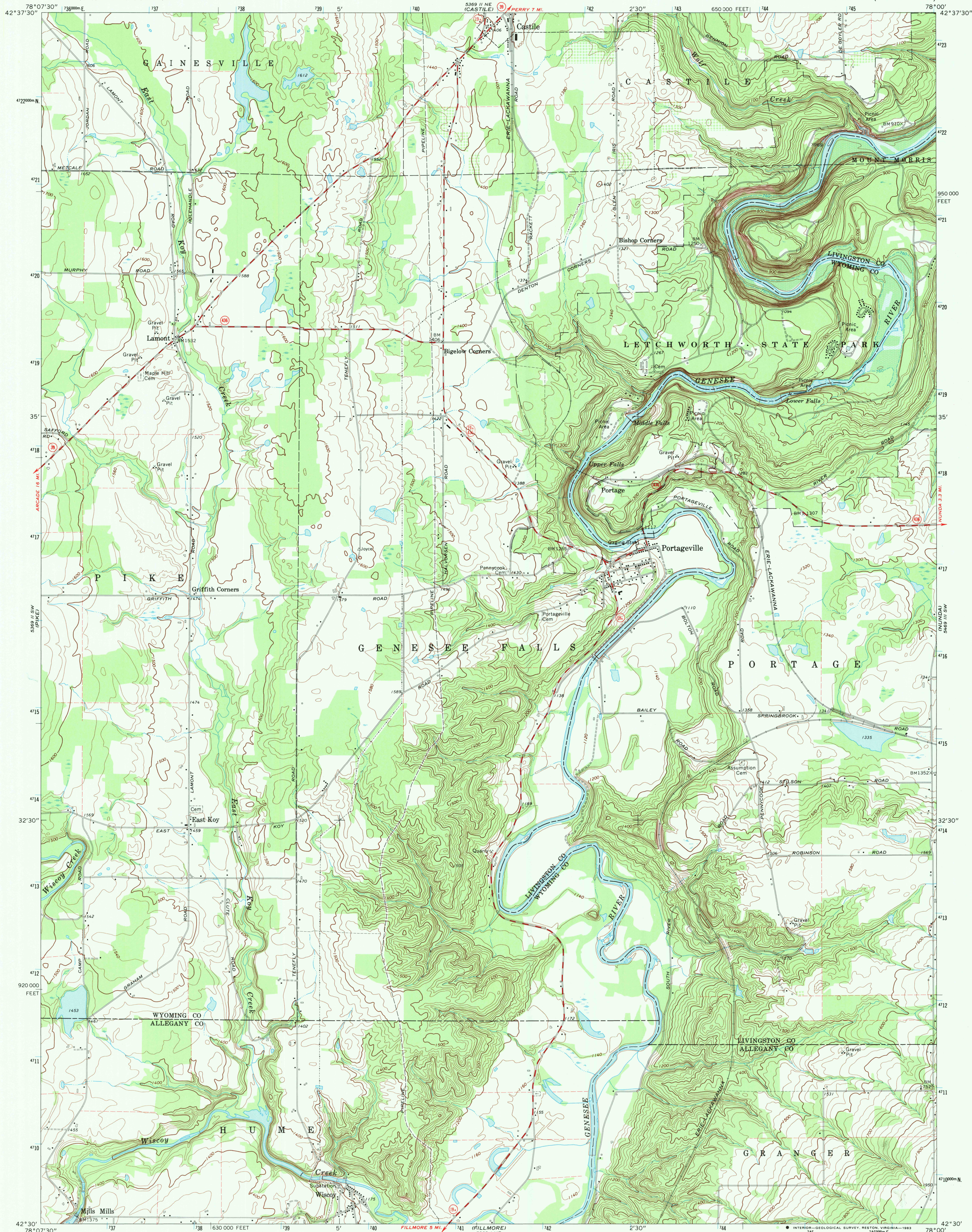
5369 II SE
(WASGAM)

UNITED STATES
DEPARTMENT OF THE INTERIOR
GEOLOGICAL SURVEY

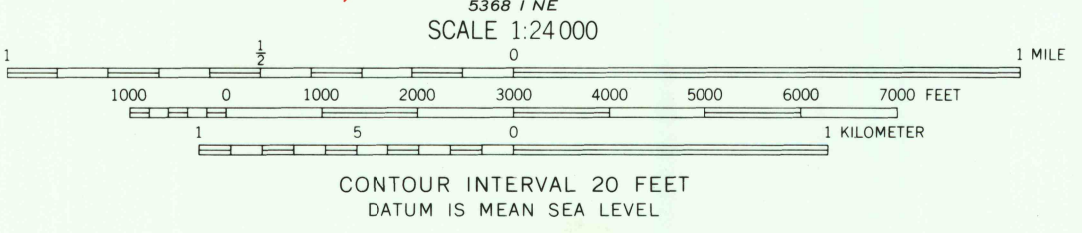
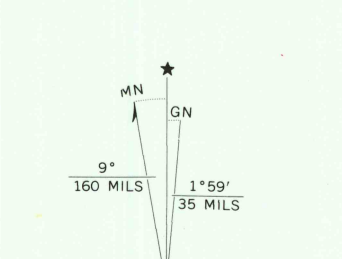
STATE OF NEW YORK
DEPARTMENT OF TRANSPORTATION

PORTAGEVILLE QUADRANGLE
NEW YORK
7.5 MINUTE SERIES (TOPOGRAPHIC)

5369 II NW
(MOUNT MORRIS)



Mapped, edited, and published by the Geological Survey
Control by USGS and USC&GS
Topography by photogrammetric methods from aerial
photographs taken 1972. Field checked 1972
Supersedes Army Map Service map dated 1943
Projection and 10,000-foot grid ticks: New York coordinate
system, west zone (transverse Mercator)
1000-meter Universal Transverse Mercator grid ticks,
zone 17, shown in blue. 1927 North American datum
Fine red dashed lines indicate selected fence and field lines where
generally visible on aerial photographs. This information is unchecked
Area covered by dashed light-blue pattern is
subject to controlled inundation by Mount Morris Dam



ROAD CLASSIFICATION

Primary highway, hard surface	Light-duty road, hard or improved surface
Secondary highway, hard surface	Unimproved road
Interstate Route	U. S. Route
	State Route

THIS MAP COMPLIES WITH NATIONAL MAP ACCURACY STANDARDS
FOR SALE BY U. S. GEOLOGICAL SURVEY, RESTON, VIRGINIA 22092
A FOLDER DESCRIBING TOPOGRAPHIC MAPS AND SYMBOLS IS AVAILABLE ON REQUEST

Map photoinspected 1976
No major culture or drainage changes observed

PORTAGEVILLE, N. Y.
N4230-W7800/7.5
PHOTOINSPECTED 1976
1972

AMS 5369 II SE-SERIES V821

MAR 5 1984

RETURN TO:
USGS AND HISTORICAL MAP ARCHIVES