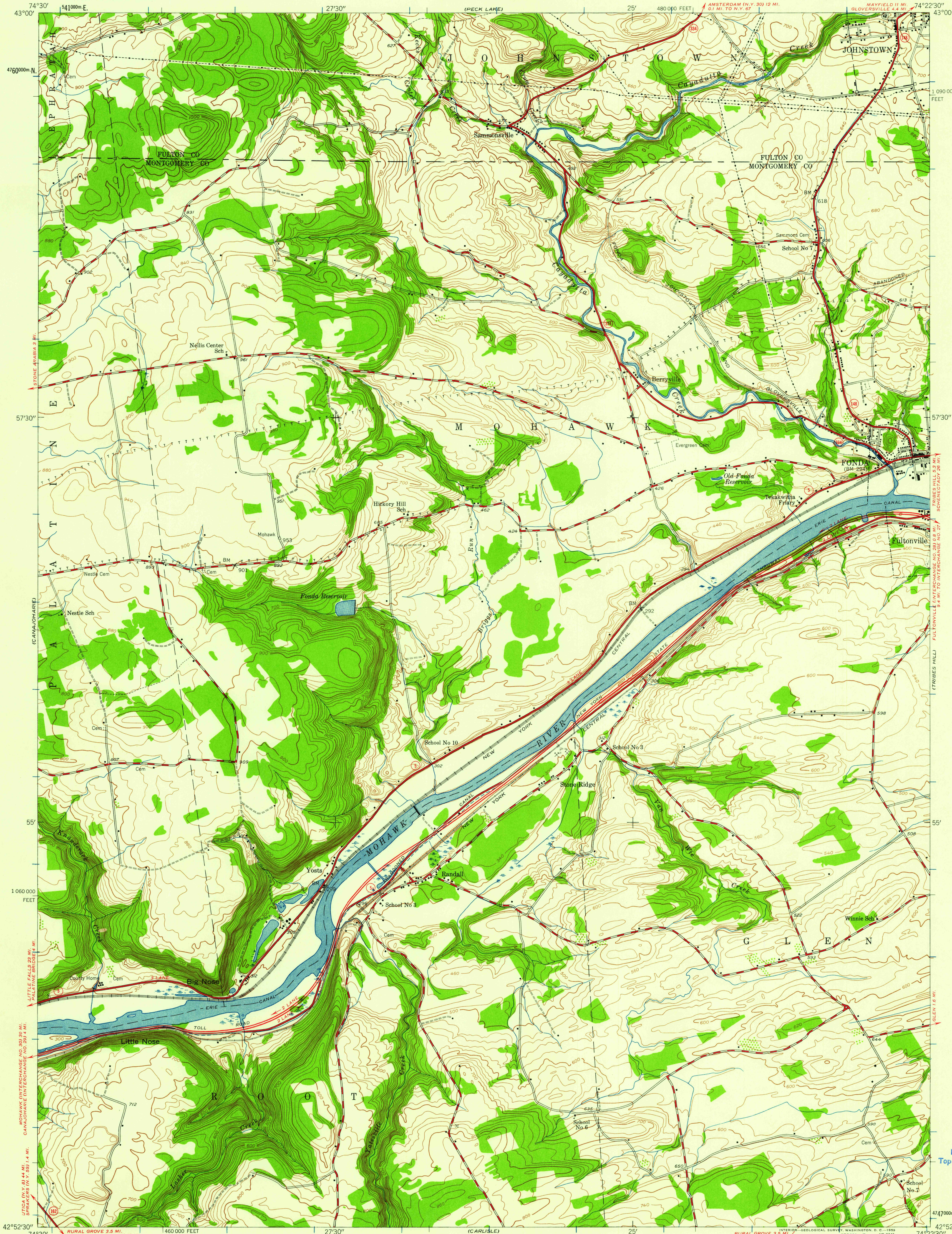


UNITED STATES
DEPARTMENT OF THE ARMY
CORPS OF ENGINEERS

RANDALL QUADRANGLE
NEW YORK
7.5 MINUTE SERIES (TOPOGRAPHIC)
NW/4 FONDA 15' QUADRANGLE



Mapped by the Army Map Service
Published for civil use by the Geological Survey

Control by USGS, USC&GS, and TVA

Topography from aerial photographs by multiplex methods
Aerial photographs taken 1942-1943. Field check 1944

Polyconic projection. 1927 North American datum
10,000-foot grid based on New York coordinate system, east zone
1000-meter Universal Transverse Mercator grid ticks,
zone 18, shown in blue

New York State Thruway added 1959

APPROXIMATE MEAN
DECLINATION 1944

THIS MAP COMPLIES WITH NATIONAL MAP ACCURACY STANDARDS
FOR SALE BY U. S. GEOLOGICAL SURVEY, WASHINGTON 25, D. C.
A FOLDER DESCRIBING TOPOGRAPHIC MAPS AND SYMBOLS IS AVAILABLE ON REQUEST

ROAD CLASSIFICATION

Heavy-duty ——— Light-duty ———
Medium-duty ——— Unimproved dirt ———

○ State Route

USCS
Historical File
Topographic Division

U.S.G.S.
FILE COP
TOPOGRAPHIC DIVISION

RANDALL, N. Y.
NW/4 FONDA 15' QUADRANGLE
N4252.5—W7422.5/7.5

1944

AUG 26 1959

2370