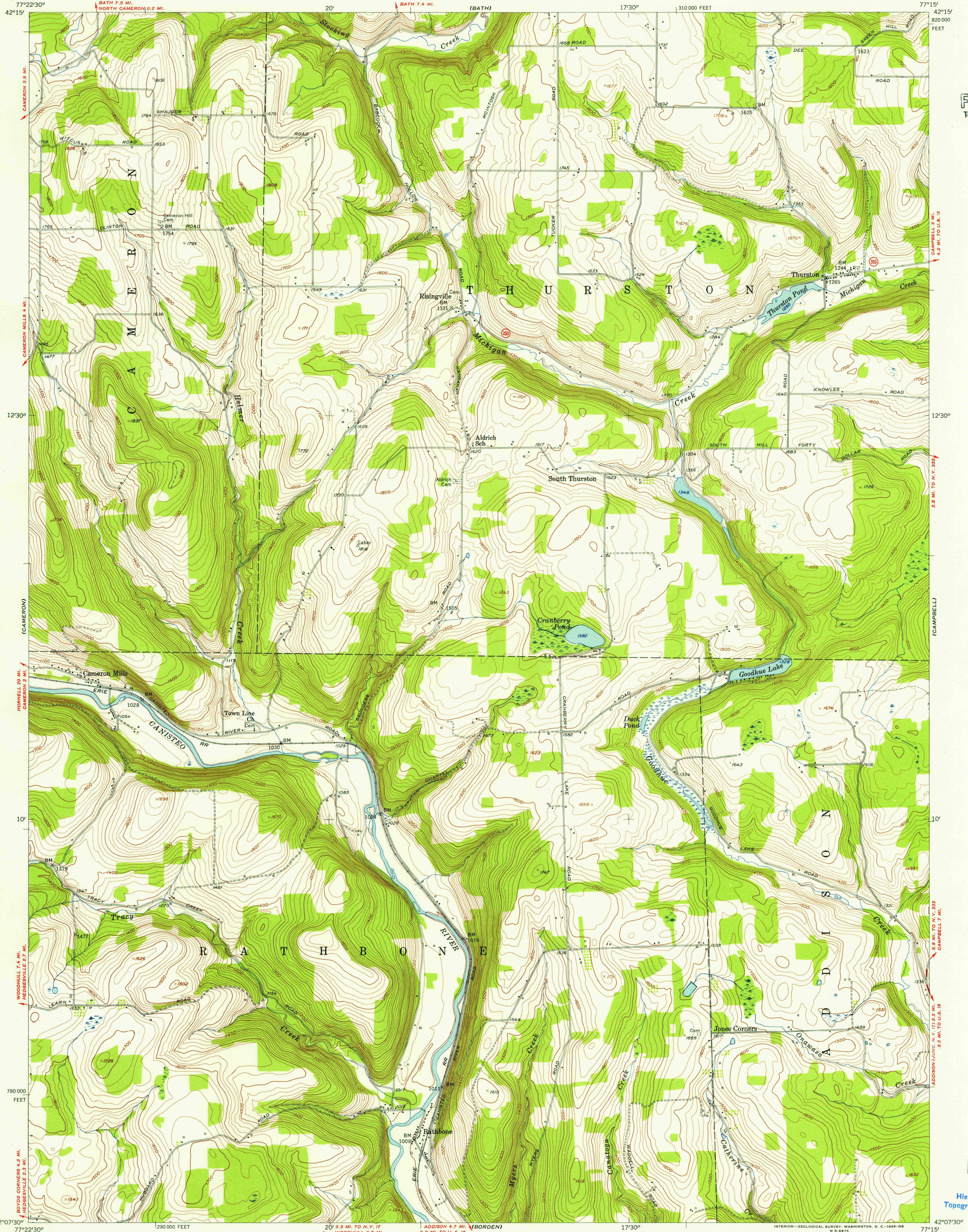


UNITED STATES
DEPARTMENT OF THE INTERIOR
GEOLOGICAL SURVEY

RATHBONE QUADRANGLE
NEW YORK—STEBEN CO.
7.5 MINUTE SERIES (TOPOGRAPHIC)
NE/4 WOODHULL 15' QUADRANGLE

U.S.G.S.
FILE COPY
TOPOGRAPHIC DIVISION



Mapped, edited, and published by the Geological Survey

Control by USGS and USC&GS

Topography from aerial photographs by multiplex methods

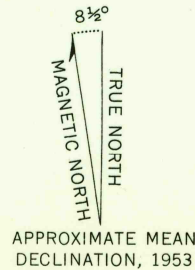
Aerial photographs taken 1952. Field check 1953

Polyconic projection. 1927 North American datum

10,000-foot grid based on New York coordinate system,

central zone

Unchecked elevations are shown in brown



APPROXIMATE MEAN
DECLINATION, 1953

SCALE 1:24000

1000 0 1000 2000 3000 4000 5000 6000 7000 FEET

1 5 0 1 KILOMETER

CONTOUR INTERVAL 20 FEET

DATUM IS MEAN SEA LEVEL



NEW YORK
QUADRANGLE LOCATION

ROAD CLASSIFICATION

Heavy-duty ——— Light-duty ———

Medium-duty ——— Unimproved dirt ———

U. S. Route ——— State Route ———

RATHBONE, N. Y.

NE/4 WOODHULL 15' QUADRANGLE

N 4207.5—W 7715.7.5

1953

JUN 8 1955

3135