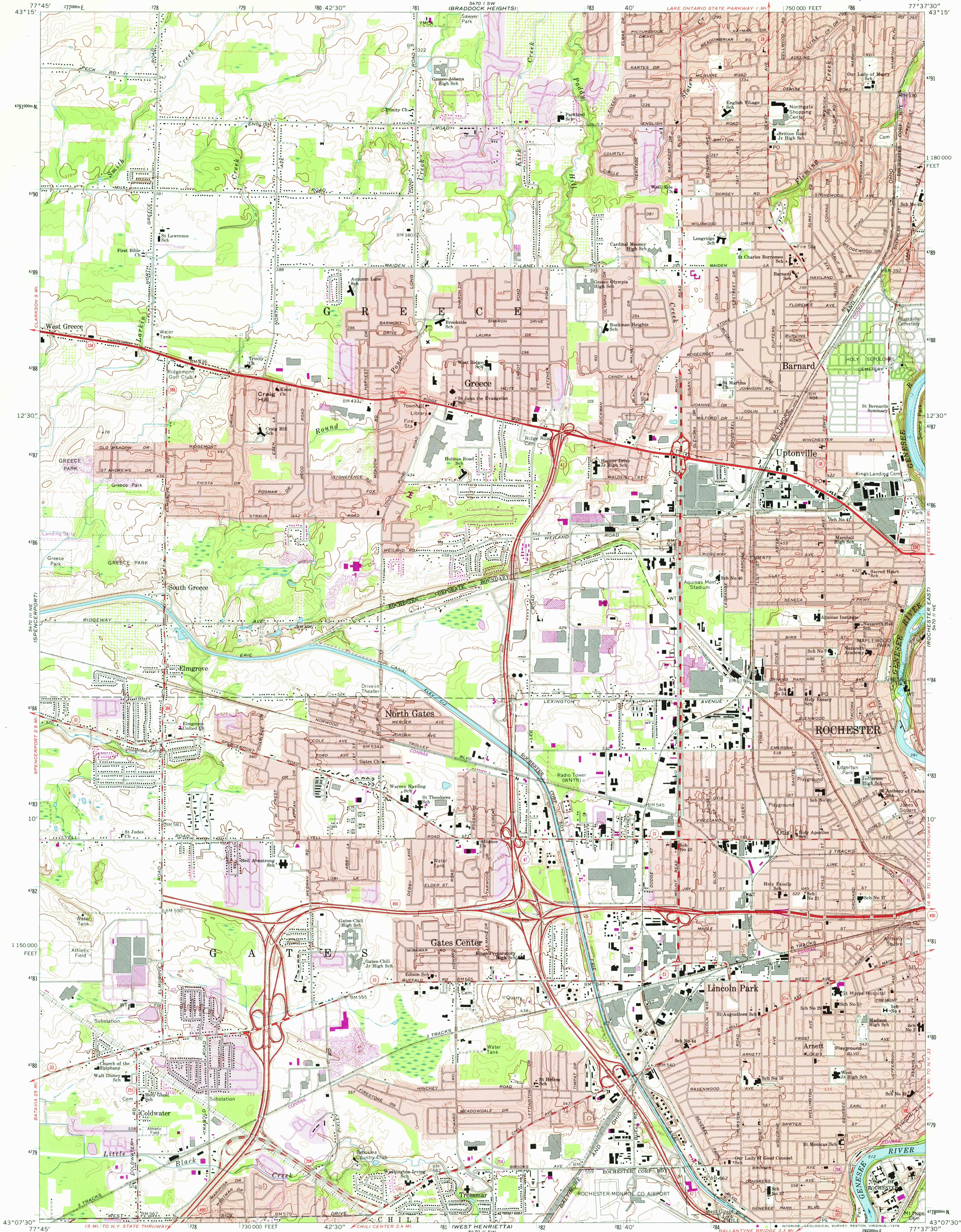


5470 I I NE
ROCHESTER EAST 11



Maped, edited, and published by the Geological Survey
Control by USGS, USC&GS, and New York Geodetic Survey
Topography by photogrammetric methods from aerial photographs
taken 1971. Field checked 1971
Supersedes map dated 1952
Selected hydrographic data compiled from U. S. Lake Survey Chart 238
(1971). This information is not intended for navigational purposes
Projection and 10,000-foot grid ticks: New York coordinate
system, west zone (transverse Mercator)
1000-meter Universal Transverse Mercator grid ticks, zone 18,
shown in blue. 1927 North American datum
Fine red dashed lines indicate selected fence and field lines where
generally visible on aerial photographs. This information is unchecked
Red tint indicates areas in which only landmark buildings are shown



SCALE 1:24,000
CONTOUR INTERVAL 5 FEET
NATIONAL GEODETIC VERTICAL DATUM OF 1929
DEPTH CURVES AND SOUNDINGS IN FEET—DATUM IS LOW WATER 242.8

THIS MAP COMPLIES WITH NATIONAL MAP ACCURACY STANDARDS
FOR SALE BY U. S. GEOLOGICAL SURVEY, RESTON, VIRGINIA 22092
A FOLDER DESCRIBING TOPOGRAPHIC MAPS AND SYMBOLS IS AVAILABLE ON REQUEST



ROAD CLASSIFICATION
Primary highway, hard surface
Secondary highway, hard surface
Unimproved road
Interstate Route
U. S. Route
State Route
Historical File
Topographic Division

ROCHESTER WEST, N. Y.
N4307.5—W7737.5/7.5

1971
PHOTOREVISED 1978
AMS 5470 II NW—SERIES V821

MAR 24 1979

390