

UNITED STATES
DEPARTMENT OF THE INTERIOR
GEOLOGICAL SURVEY

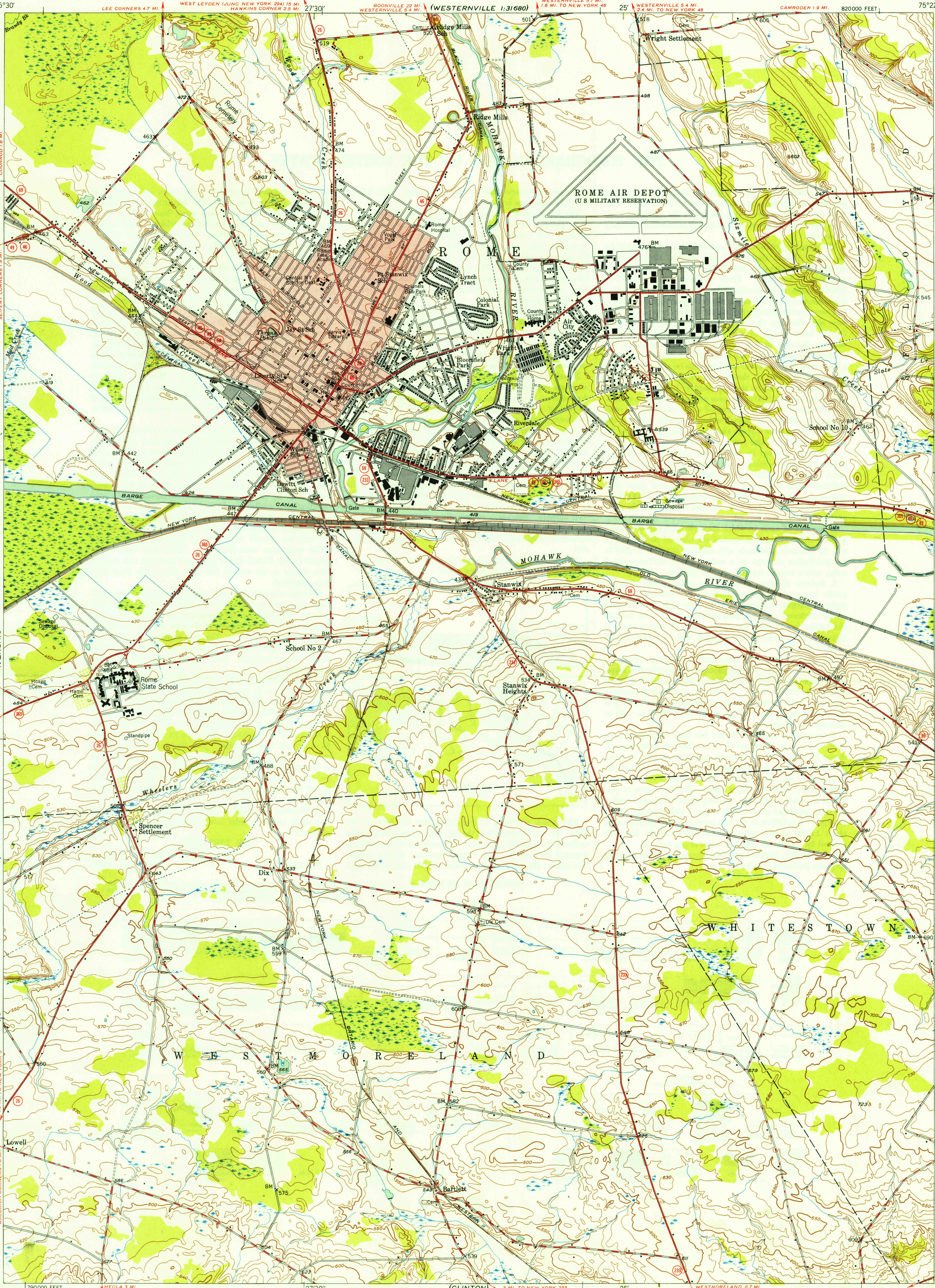
U. S. G. S.
FILE COPY
Inspection and Editing.

STATE OF NEW YORK
DEPARTMENT OF PUBLIC WORKS
CHAS. H. SELLS, SUPERINTENDENT
B. D. TALLAMY, CHIEF ENGINEER

ROME QUADRANGLE
NEW YORK-ONEIDA CO.
7.5 MINUTE SERIES (TOPOGRAPHIC)

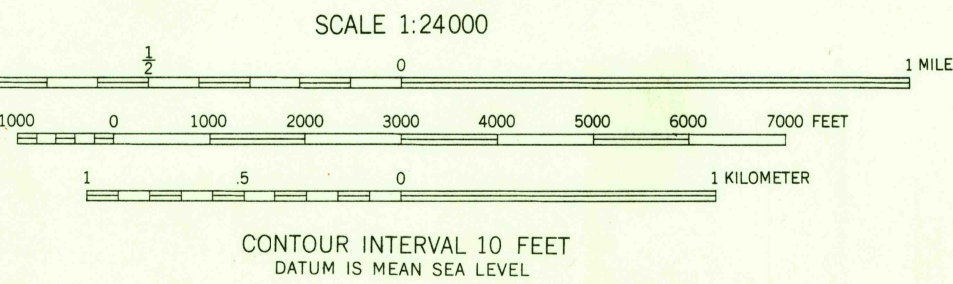
(NORTH WESTERN)
1:31680

U. S. G. S.
FILE COPY
Inspection and Editing.



Mapped, edited, and published by the Geological Survey
Control by USGS, USC&GS and New York State Survey
Culture and drainage in part compiled from
aerial photographs taken 1941
Topography by plane-table methods 1947
Polyconic projection, 1927 North American datum
10,000-foot grid based on New York coordinate system,
central zone
Red tint indicates area in which only
landmark buildings are shown

APPROXIMATE MEAN
DECLINATION, 1947



THIS MAP COMPLIES WITH NATIONAL MAP ACCURACY STANDARDS
FOR SALE BY U. S. GEOLOGICAL SURVEY, WASHINGTON 25, D. C.

ROAD CLASSIFICATION
Heavy-duty... Improved dirt...
Medium-duty... Unimproved dirt...
Loose-surface, graded, or narrow hard-surface...
U. S. Route
State Route

Historical File
Topographic Division
Inspection and Editing.

ROME, N. Y.
N4307.5-W7522.5/7.5

PRINTED 1949

JAN 19 1949

3195