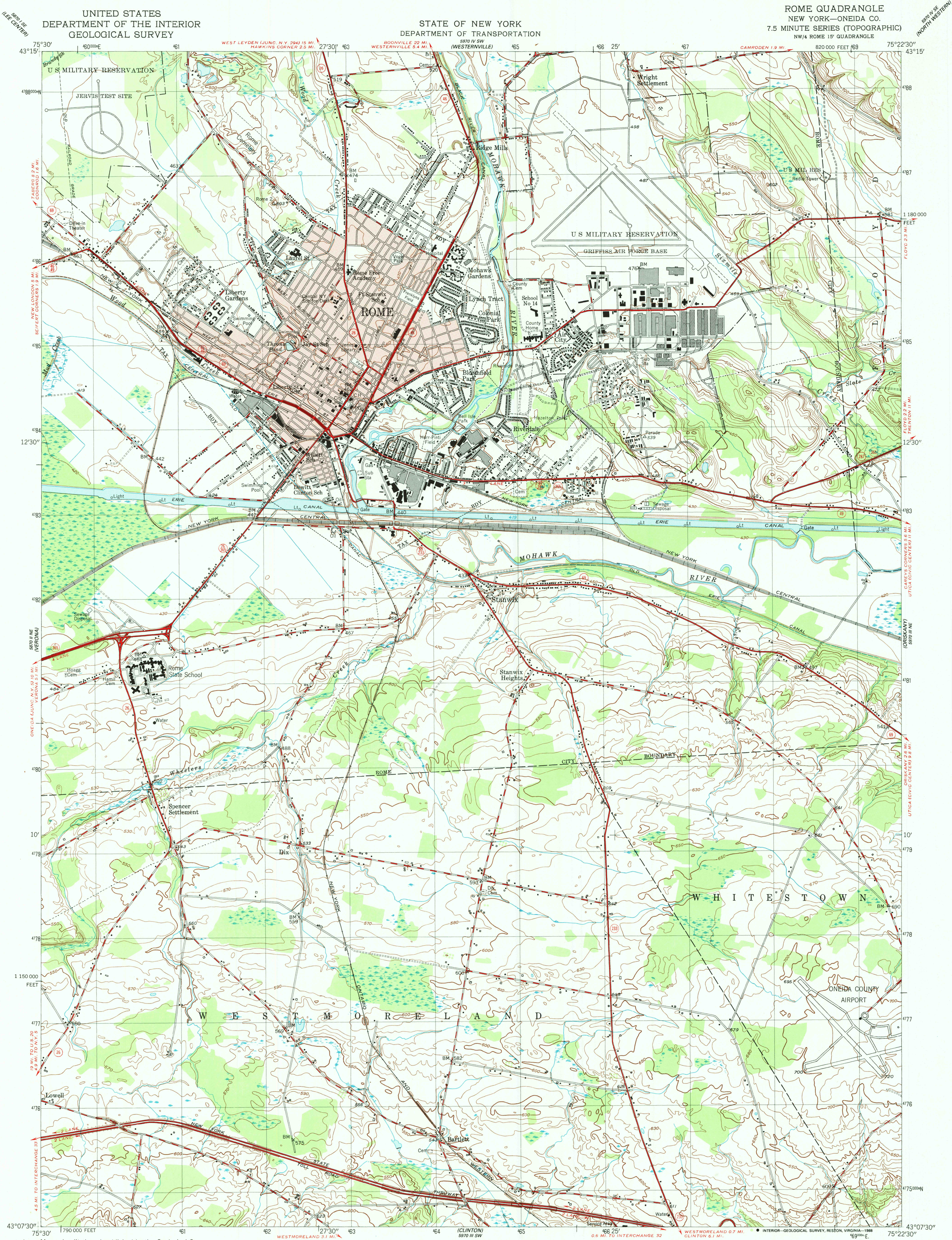


UNITED STATES
DEPARTMENT OF THE INTERIOR
GEOLOGICAL SURVEY

STATE OF NEW YORK
DEPARTMENT OF TRANSPORTATION

ROME QUADRANGLE
NEW YORK—ONEIDA CO.
7.5 MINUTE SERIES (TOPOGRAPHIC)
NW/4 ROME 15' QUADRANGLE
NW/4 ROME 15' QUADRANGLE



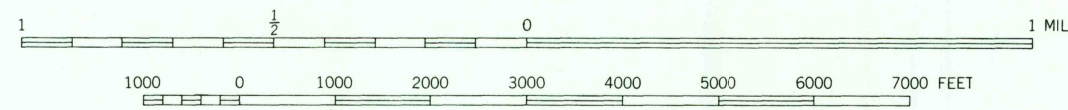
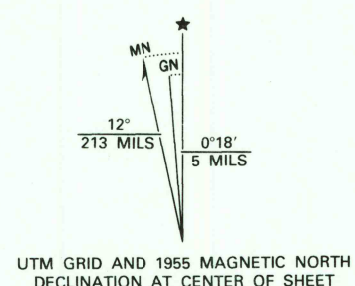
Mapped, edited, and published by the Geological Survey
Control by USGS, and USC&GS

Culture and drainage in part compiled from aerial photographs
taken 1941. Topography by planetable surveys 1947
Revised 1955

Polyconic projection. 1927 North American datum
10,000-foot grid based on New York coordinate system,
central zone
1000-meter Universal Transverse Mercator grid, zone 18

Red tint indicates area in which only
landmark buildings are shown

To place on the predicted North American Datum 1983,
move the projection lines 3 meters south and
29 meters west as shown by dashed corner ticks



CONTOUR INTERVAL 10 FEET
NATIONAL GEODETIC VERTICAL DATUM OF 1929

THIS MAP COMPLIES WITH NATIONAL MAP ACCURACY STANDARDS
FOR SALE BY U. S. GEOLOGICAL SURVEY
DENVER, COLORADO 80225, OR RESTON, VIRGINIA 22092
A FOLDER DESCRIBING TOPOGRAPHIC MAPS AND SYMBOLS IS AVAILABLE ON REQUEST

ROAD CLASSIFICATION
Heavy-duty ——— Light-duty ———
Medium-duty ——— Unimproved dirt ———
U. S. Route ——— State Route ———



ROME, N. Y.
NW/4 ROME 15' QUADRANGLE
43075-B4-TF-024

1955

DMA 5970 III NW-SERIES V821

USGS NMD HISTORICAL MAP

MAY 13 1988

REC'D FILE COPY