

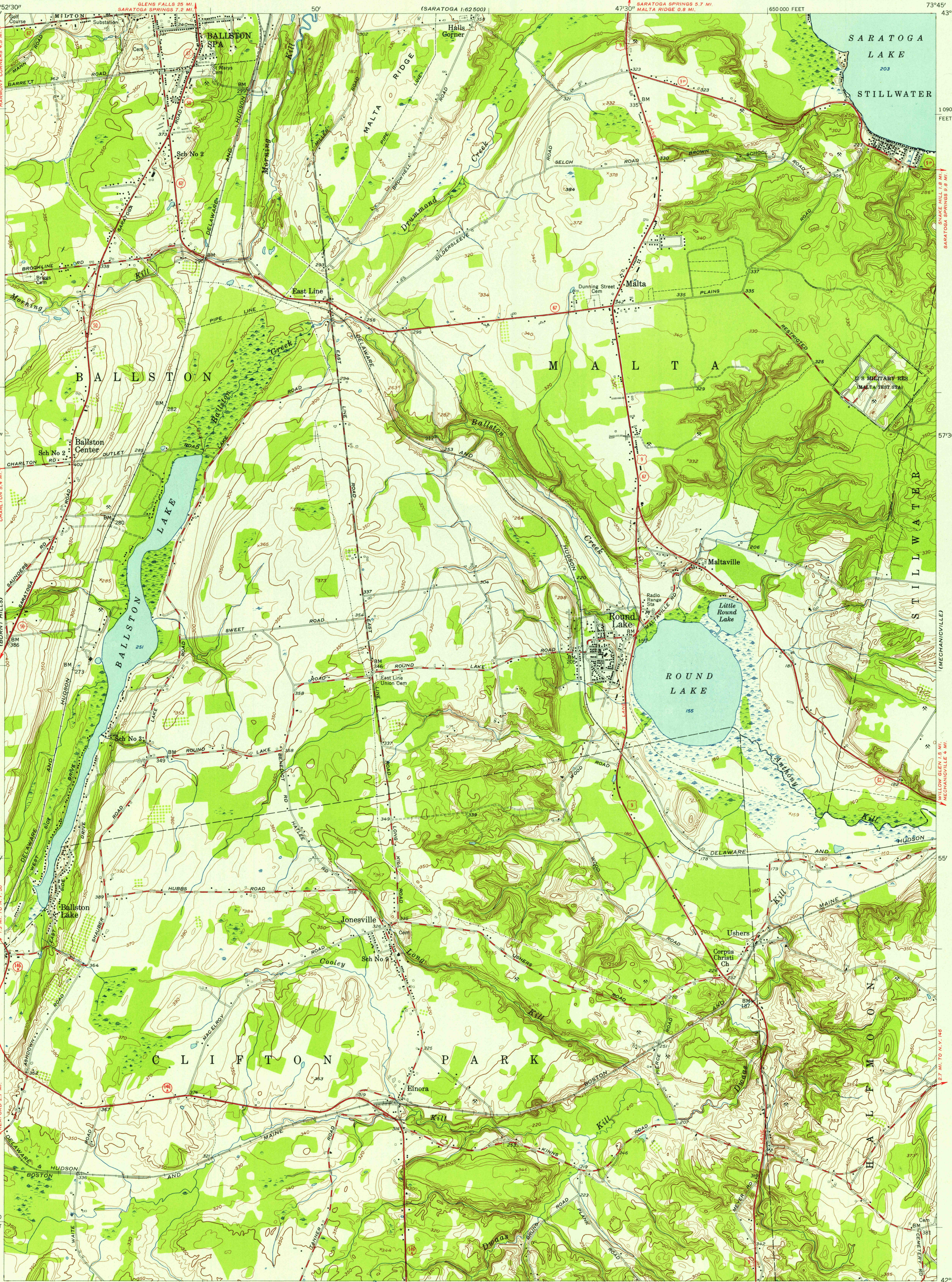
UNITED STATES
DEPARTMENT OF THE INTERIOR
GEOLOGICAL SURVEY

ROUND LAKE QUADRANGLE
NEW YORK-SARATOGA CO
7.5 MINUTE SERIES (TOPOGRAPHIC)
NE/4 SCHENECTADY 15' QUADRANGLE

(SARATOGA 1:62,500)
(SCHUYLERVILLE 1:62,500)

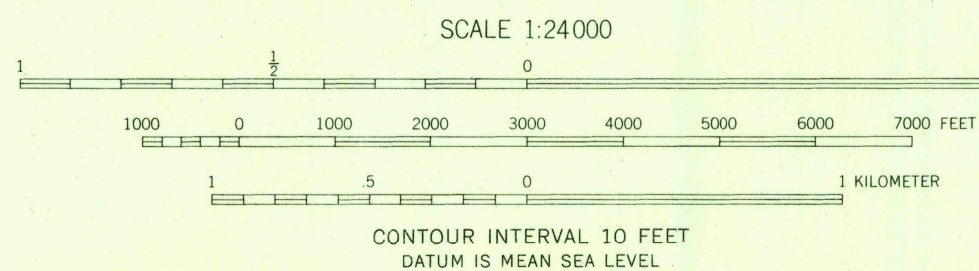
U.S.G.S.
FILE COPY
TOPOGRAPHIC DIVISION

U.S.G.S.
FILE COPY
TOPOGRAPHIC DIVISION



Mapped, edited, and published by the Geological Survey
Control by USGS and USC&GS
Topography from aerial photographs by stereophotogrammetric
methods. Aerial photographs taken 1952. Field check 1954
Polyconic projection. 1927 North American datum
10,000-foot grid based on New York coordinate system,
east zone
Unchecked elevations are shown in brown

13°
TRUE NORTH
APPROXIMATE MEAN
DECLINATION, 1954



USGS
Historical File
Topographic Division

ROAD CLASSIFICATION
Heavy-duty _____ Light-duty _____
Medium-duty _____ Unimproved dirt _____
U.S. Route _____ State Route _____



ROUND LAKE, N. Y.
NE/4 SCHENECTADY 15' QUADRANGLE
N 4252.5 - W 7345/7.5
1954

THIS MAP COMPLIES WITH NATIONAL MAP ACCURACY STANDARDS
FOR SALE BY U. S. GEOLOGICAL SURVEY, WASHINGTON 25, D. C.
A FOLDER DESCRIBING TOPOGRAPHIC MAPS AND SYMBOLS IS AVAILABLE ON REQUEST

MAY 25 1956

3720