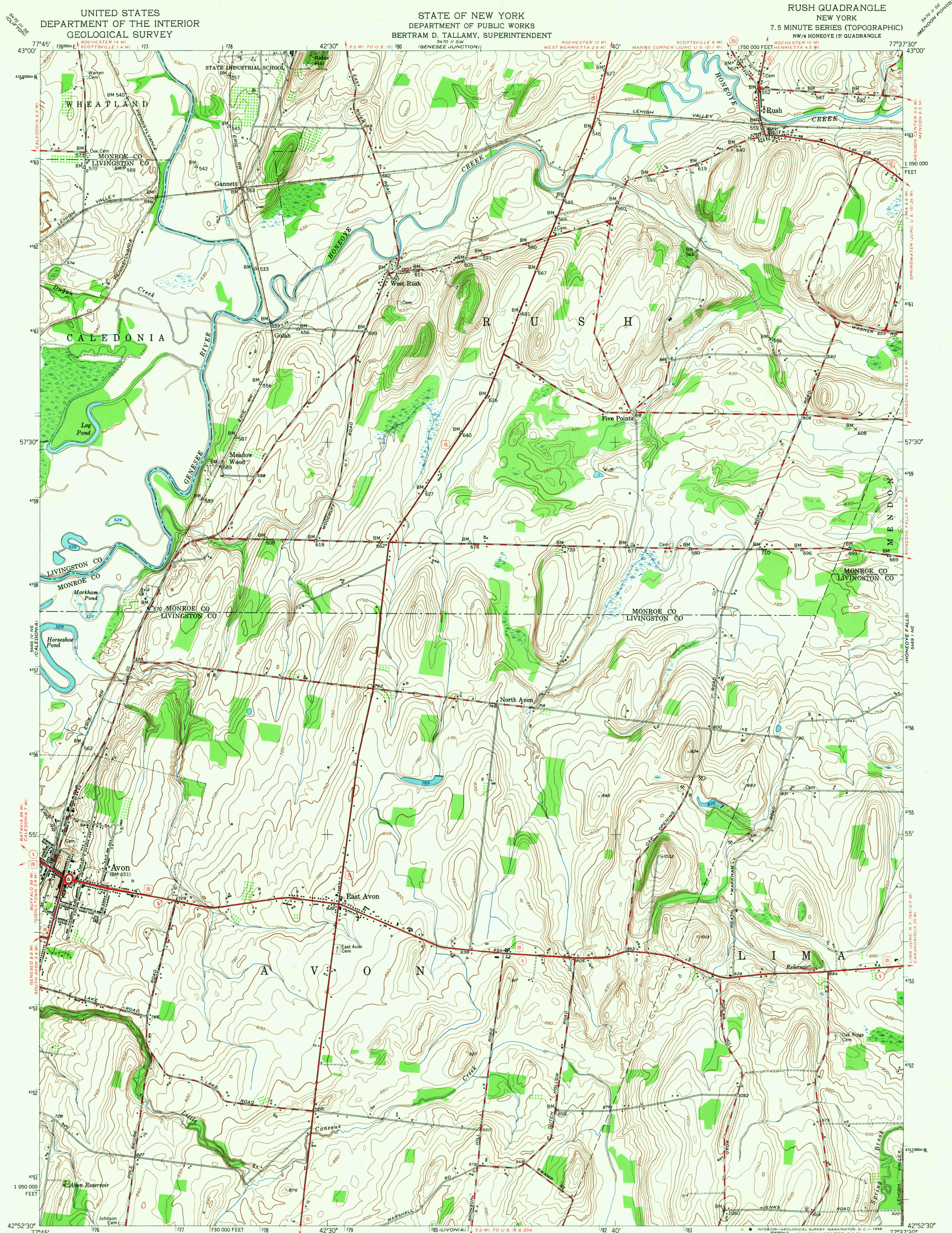


UNITED STATES  
DEPARTMENT OF THE INTERIOR  
GEOLOGICAL SURVEY

STATE OF NEW YORK  
DEPARTMENT OF PUBLIC WORKS  
BERTRAM D. TALLAMY, SUPERINTENDENT

RUSH QUADRANGLE  
NEW YORK  
7.5 MINUTE SERIES (TOPOGRAPHIC)  
NW/4 HONEOYE 15' QUADRANGLE



Mapped, edited, and published by the Geological Survey  
Control by USGS, USC&GS, and  
New York Geodetic Survey  
Culture and drainage in part compiled by Corps of Engineers,  
Dept. of the Army, from aerial photographs taken 1942  
Topography by plane-table methods 1951  
Contours in Monroe County surveyed in 1931. Revised 1951  
Polyconic projection, 1927 North American datum  
10,000-foot grid based on New York coordinate system,  
west zone  
1000-meter Universal Transverse Mercator grid ticks,  
zone 18, shown in blue

SCALE 1:24,000  
1 000 0 1000 2000 3000 4000 5000 6000 7000 FEET  
1 0 1 2 3 4 5 6 7 8 9 10 KILOMETER

CONTOUR INTERVAL 10 FEET  
DATUM IS MEAN SEA LEVEL

THIS MAP COMPLIES WITH NATIONAL MAP ACCURACY STANDARDS  
FOR SALE BY U.S. GEOLOGICAL SURVEY, WASHINGTON, D. C. 20242  
A FOLDER DESCRIBING TOPOGRAPHIC MAPS AND SYMBOLS IS AVAILABLE ON REQUEST

USGS  
Historical File  
Topographic Division

ROAD CLASSIFICATION  
Heavy-duty 4 LANE 16 LANE Light-duty  
Medium-duty 4 LANE 16 LANE Unimproved dirt  
U.S. Route State Route

U.S.G.S.  
FILE 1000  
TOPOGRAPHIC DIVISION

RUSH, N.Y.  
NW/4 HONEOYE 15' QUADRANGLE  
N4252.5-W7737.5/7.5  
1951  
AMS 5469 1 NW-SERIES V821

2165  
OCT 18 1955