

8670 1/2 SE
CLIFTON

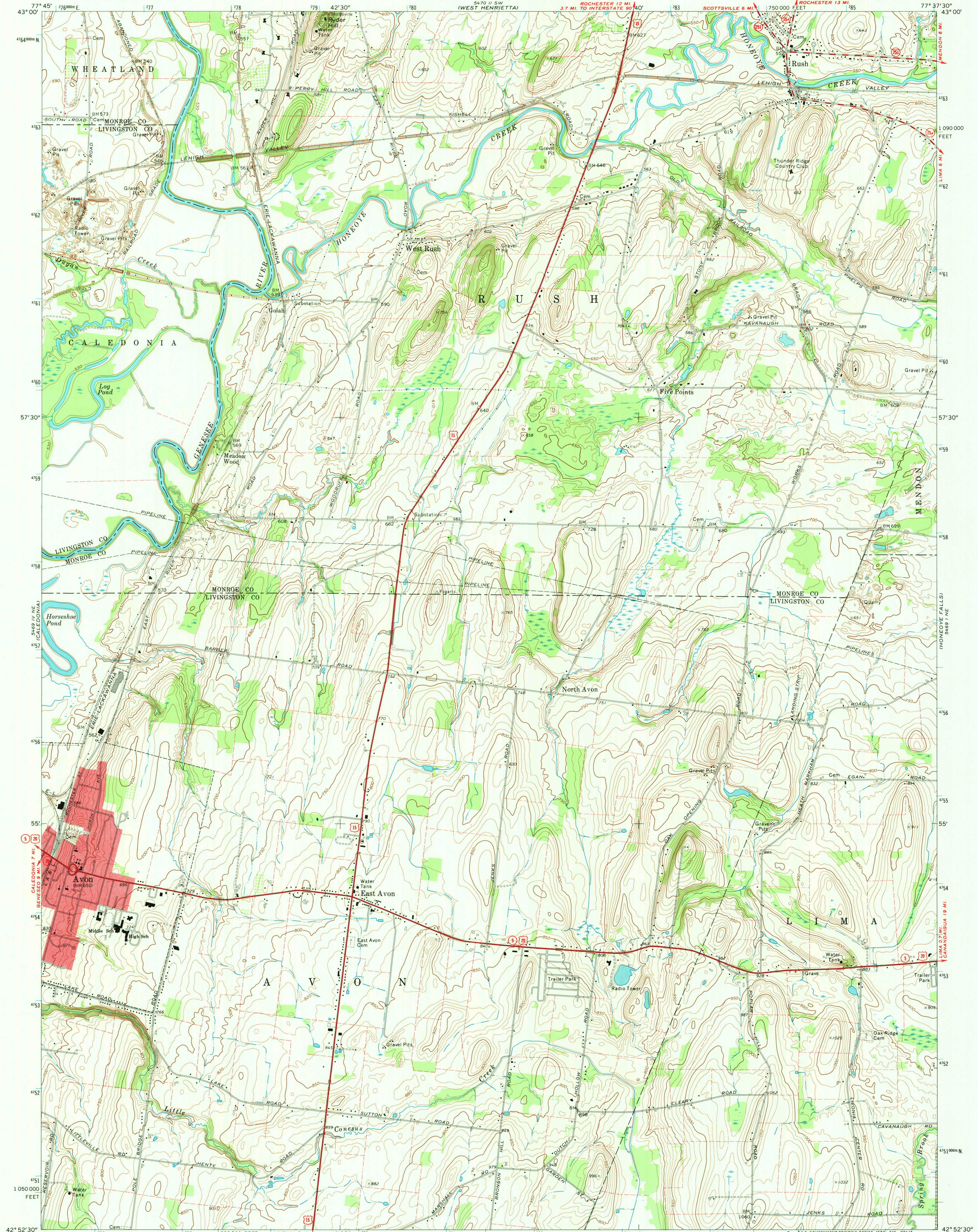
UNITED STATES
DEPARTMENT OF THE INTERIOR
GEOLOGICAL SURVEY

STATE OF NEW YORK
DEPARTMENT OF TRANSPORTATION

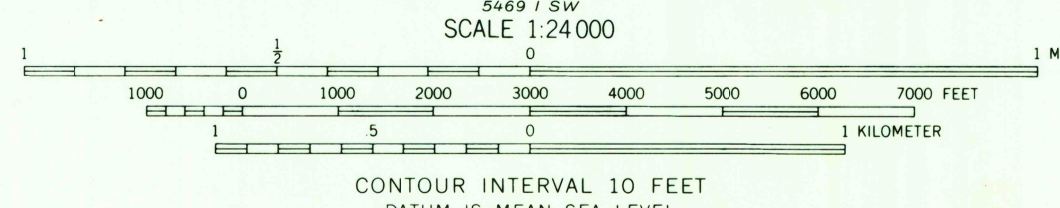
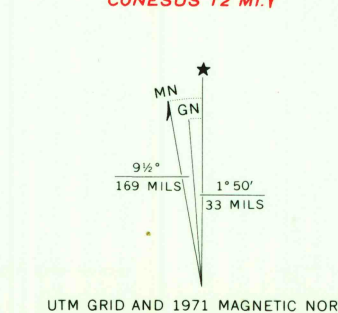
RUSH QUADRANGLE
NEW YORK

7.5 MINUTE SERIES (TOPOGRAPHIC)

8670 1/2 SE
PITTSFORD



Maped, edited, and published by the Geological Survey
Control by USGS, USC&GS, and New York Geodetic Survey
Topography by photogrammetric methods from aerial photographs
taken 1971. Field checked 1971
Supersedes map dated 1951
Projection and 10,000-foot grid ticks: New York coordinate
system, west zone (Transverse Mercator)
1000-meter Universal Transverse Mercator grid ticks, zone 18,
shown in blue. 1927 North American datum
Fine red dashed lines indicate selected fence and field lines where
generally visible on aerial photographs. This information is unchecked
Red tint indicates areas in which only landmark buildings are shown



ROAD CLASSIFICATION

Primary highway, hard surface	Light-duty road, hard or improved surface
Secondary highway, hard surface	Unimproved road

○ Interstate Route □ U. S. Route ○ State Route

U.S. Geological Survey
Topographic Division

JUL 30 1973
RUSH, N. Y.
N4252.5-W7737.5/7.5
1971
AMS 5469 1 NW-SERIES V821

THIS MAP COMPLIES WITH NATIONAL MAP ACCURACY STANDARDS
FOR SALE BY U. S. GEOLOGICAL SURVEY, WASHINGTON, D. C. 20242
A FOLDER DESCRIBING TOPOGRAPHIC MAPS AND SYMBOLS IS AVAILABLE ON REQUEST

Hoer
3500
50 plane