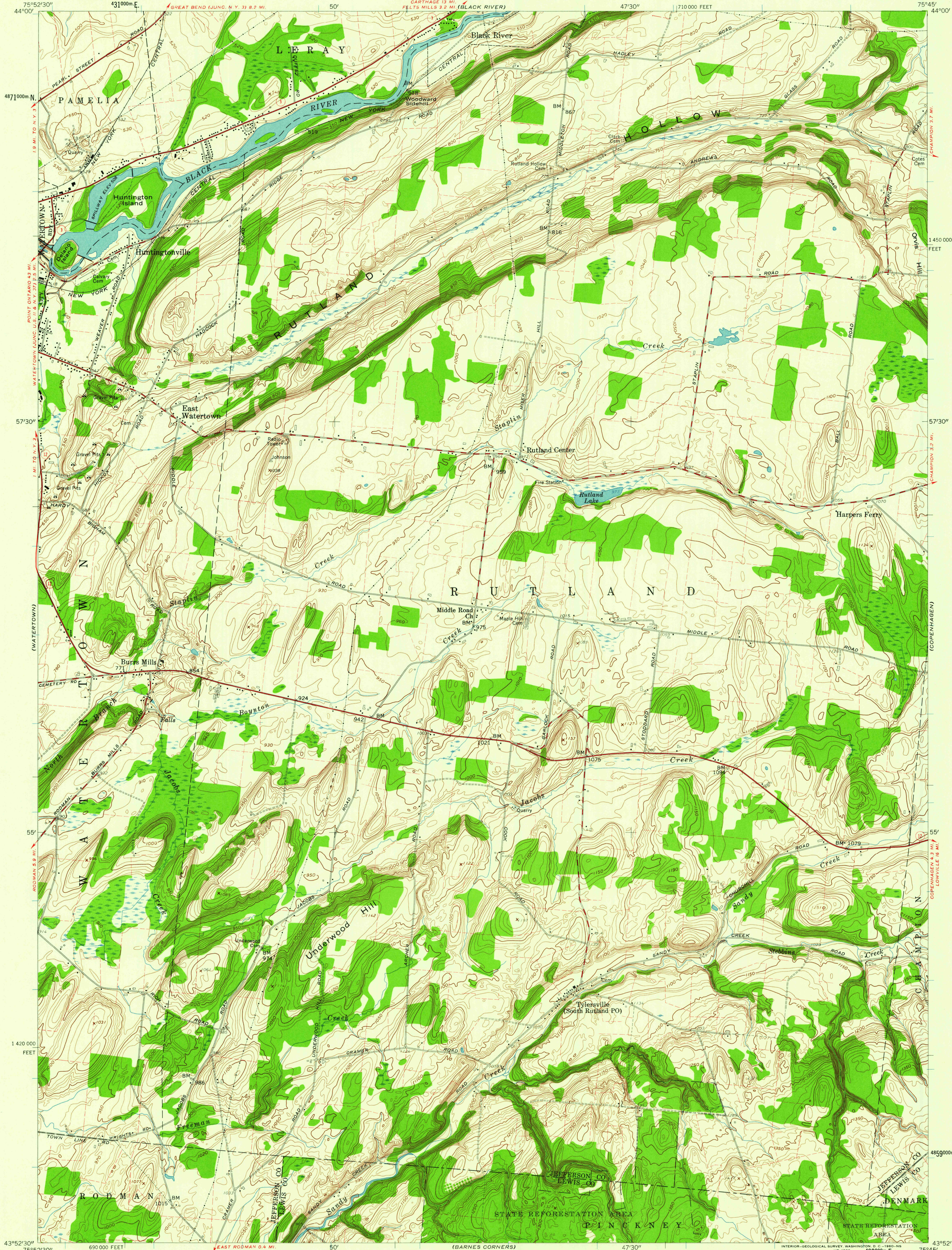


UNITED STATES
DEPARTMENT OF THE INTERIOR
GEOLOGICAL SURVEY

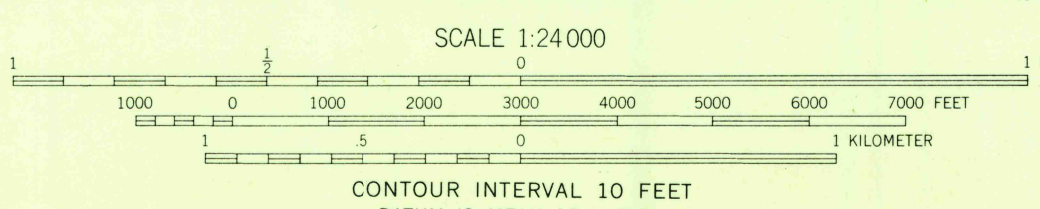
STATE OF NEW YORK
DEPARTMENT OF PUBLIC WORKS

RUTLAND CENTER QUADRANGLE
NEW YORK
7.5 MINUTE SERIES (TOPOGRAPHIC)
NE 1/4 WATERTOWN 15' QUADRANGLE



Mapped, edited, and published by the Geological Survey
Control by USGS, USC&GS, and TVA
Topography from aerial photographs by photogrammetric methods
Aerial photographs taken 1957 and 1958. Field check 1959
Polyconic projection. 1927 North American datum
10,000-foot grid based on New York coordinate system,
central zone
1000-meter Universal Transverse Mercator grid ticks,
zone 18, shown in blue
Fine red dashed lines indicate selected fence and field lines
visible on aerial photographs. This information is unchecked

APPROXIMATE MEAN
DECLINATION, 1959



USGS
Historical File
Topographic Division



ROAD CLASSIFICATION
Heavy-duty ——— Light-duty ———
Medium-duty ——— Unimproved dirt ———
○ State Route

RUTLAND CENTER, N. Y.
NE 1/4 WATERTOWN 15' QUADRANGLE
N4352.5—W7545/7.5

1959

USGS
FILE COP
TOPOGRAPHIC DIVISION

DEC 16 1960

2355