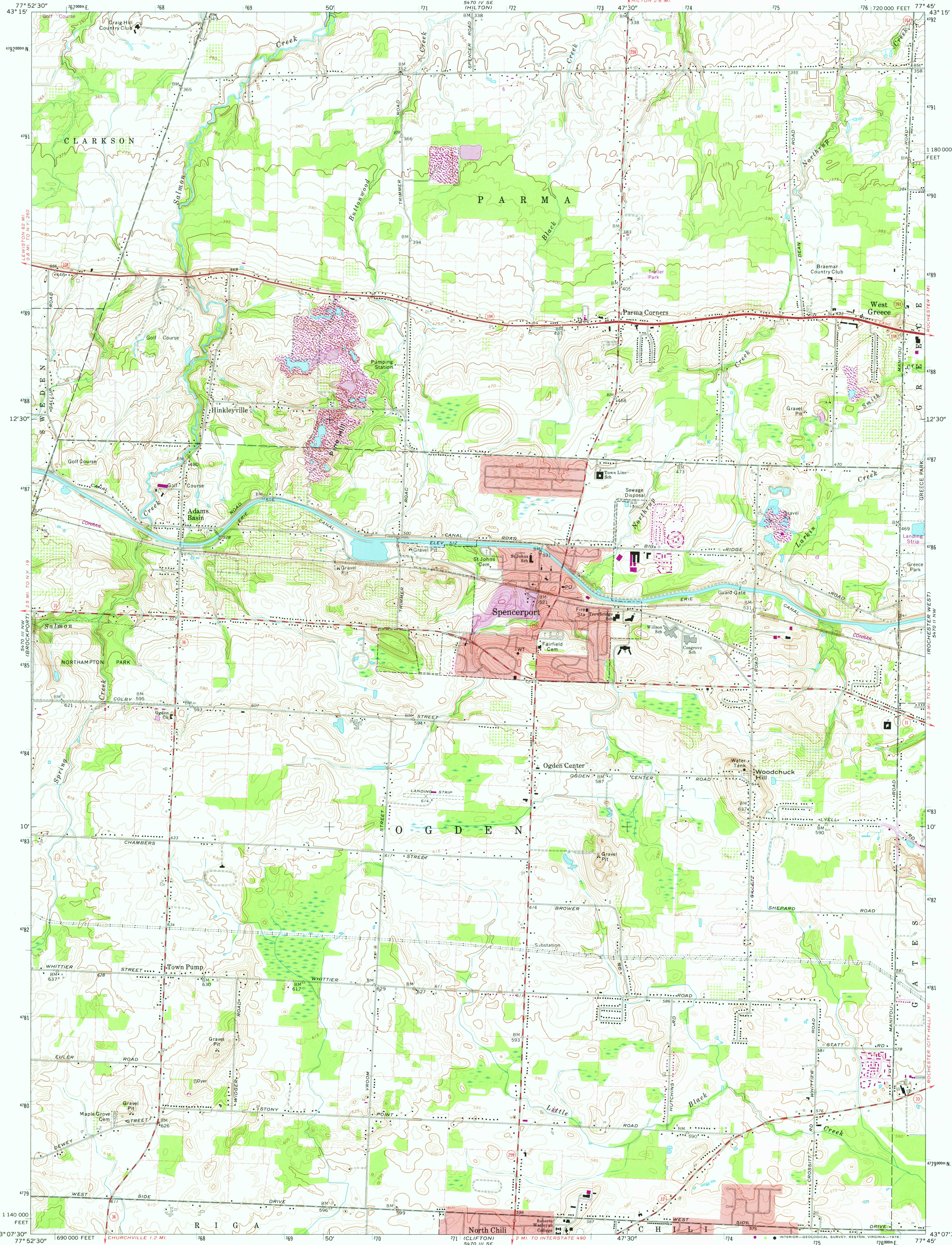


UNITED STATES
DEPARTMENT OF THE INTERIOR
GEOLOGICAL SURVEY

STATE OF NEW YORK
DEPARTMENT OF TRANSPORTATION

SPENCERPORT QUADRANGLE
NEW YORK-MONROE CO.
7.5 MINUTE SERIES (TOPOGRAPHIC)



Mapped, edited, and published by the Geological Survey

Control by USGS, USC&GS, and New York Geodetic Survey

Topography by photogrammetric methods from aerial

photographs taken 1971. Field checked 1971

Supersedes map dated 1952

Projection and 10,000-foot grid ticks: New York coordinate

system, west zone (transverse Mercator)

1000-meter Universal Transverse Mercator grid ticks,

zone 18, shown in blue. 1927 North American datum

Fine red dashed lines indicate selected fence and field lines where

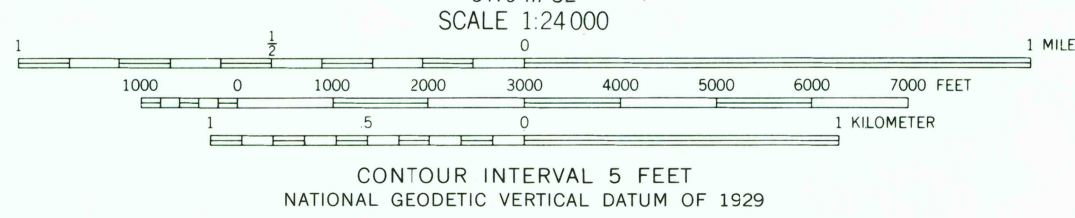
generally visible on aerial photographs. This information is unchecked

Red tint indicates areas in which only landmark buildings are shown

Revisions shown in purple compiled from aerial photographs taken 1976 and

other source data. This information not field checked. Map edited 1978

Purple tint indicates extension of urban areas



CONTOUR INTERVAL 5 FEET

NATIONAL GEODETIC VERTICAL DATUM OF 1929

THIS MAP COMPLIES WITH NATIONAL MAP ACCURACY STANDARDS
FOR SALE BY U.S. GEOLOGICAL SURVEY, RESTON, VIRGINIA 22092
A FOLDER DESCRIBING TOPOGRAPHIC MAPS AND SYMBOLS IS AVAILABLE ON REQUEST

ROAD CLASSIFICATION
Primary highway, hard surface
Secondary highway, hard surface
Unimproved road
Interstate Route
U.S. Route
State Route



QUADRANGLE LOCATION

USGS
Historical File
Topographic Division

SPENCERPORT, N.Y.
N4307.5-W7745.7.5

1971
PHOTOREVISED 1978
AMS 5470 III NE-SERIES 7821

MAR 14 1979