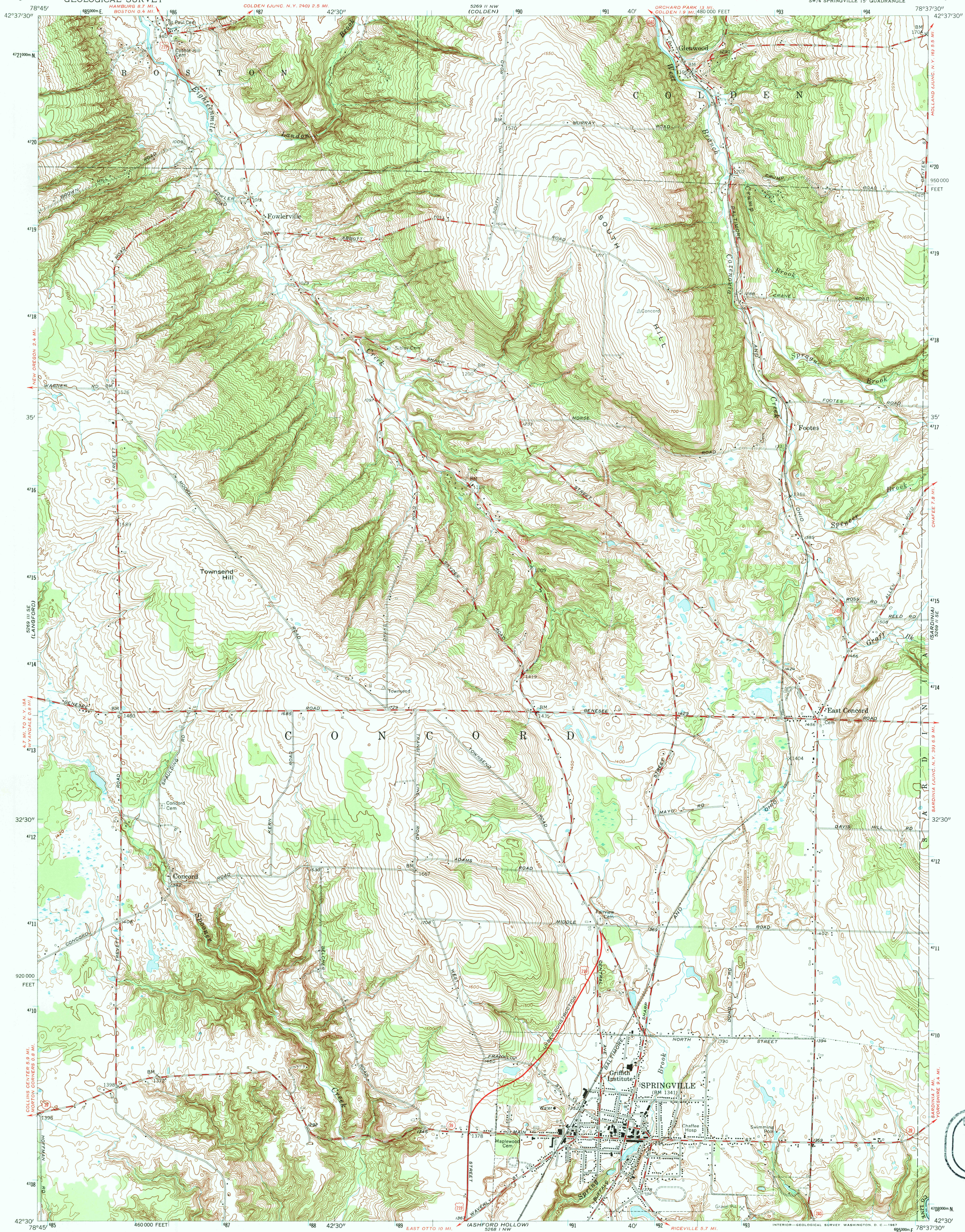
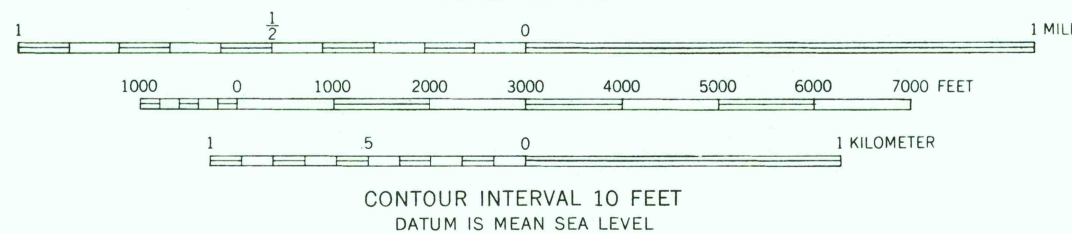
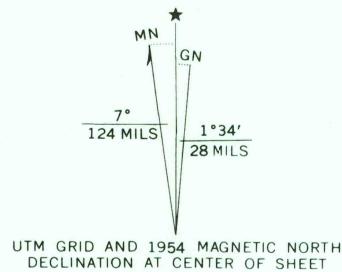


UNITED STATES  
DEPARTMENT OF THE INTERIOR  
GEOLOGICAL SURVEY

SPRINGVILLE QUADRANGLE  
NEW YORK-ERIE CO.  
7.5 MINUTE SERIES (TOPOGRAPHIC)  
SW/4 SPRINGVILLE 15' QUADRANGLE



Mapped, edited, and published by the Geological Survey  
Control by USGS and USC&GS  
Topography from aerial photographs by stereophotogrammetric  
methods. Aerial photographs taken 1952. Field check 1954  
Polyconic projection. 1927 North American datum  
10,000-foot grid based on New York coordinate system,  
west zone  
1000-meter Universal Transverse Mercator grid ticks,  
zone 17, shown in blue



ROAD CLASSIFICATION  
Heavy-duty ——— Light-duty ———  
Medium-duty ——— Unimproved dirt ———  
U. S. Route ——— State Route ———

SPRINGVILLE, N. Y.  
SW/4 SPRINGVILLE 15' QUADRANGLE  
N4230-W7837.5/7.5

1954

AMS 5269 II SW-SERIES V821

USGS HISTORICAL  
MAP ARCHIVES  
JAN 29 1996  
REC'D FILE COPY

