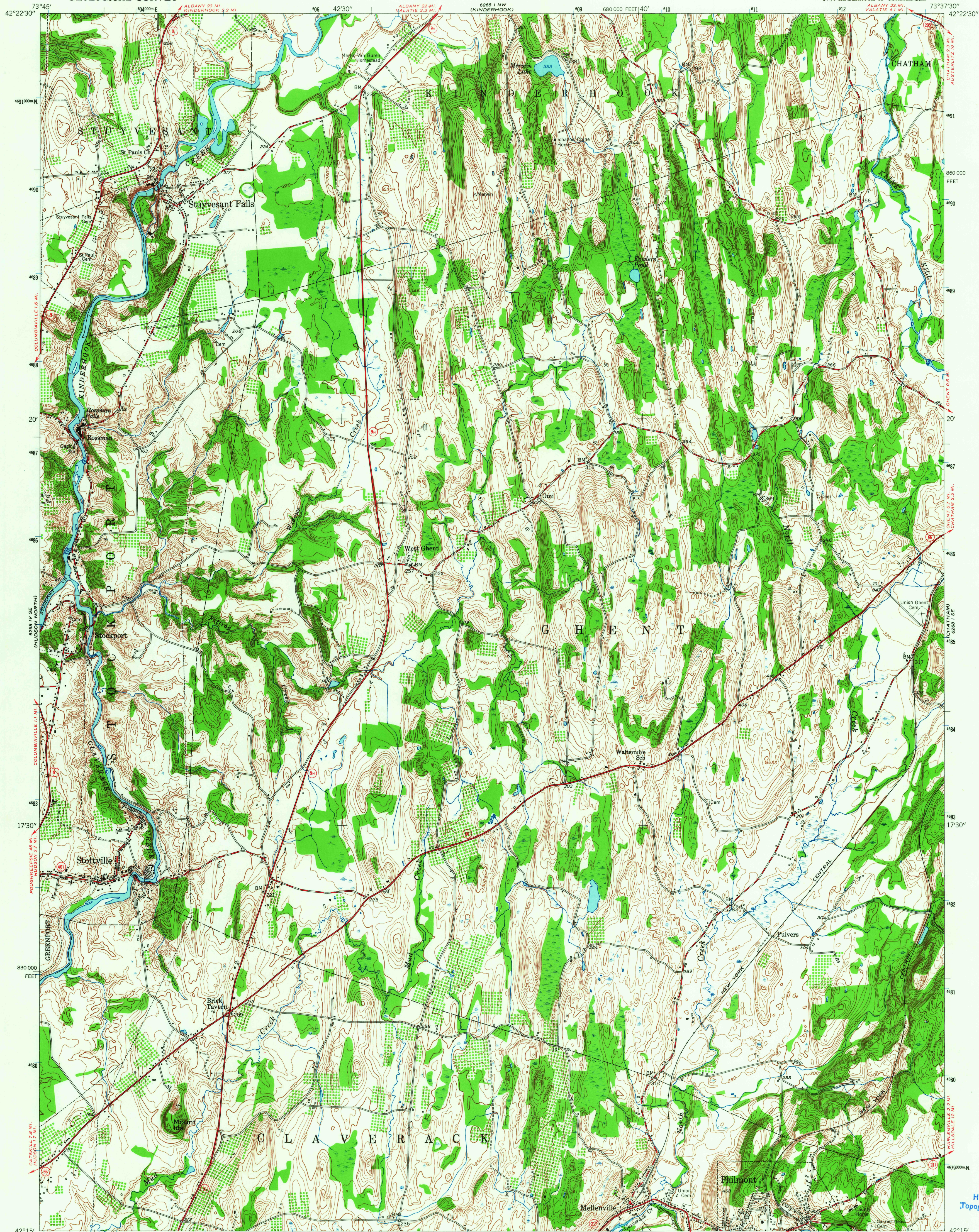
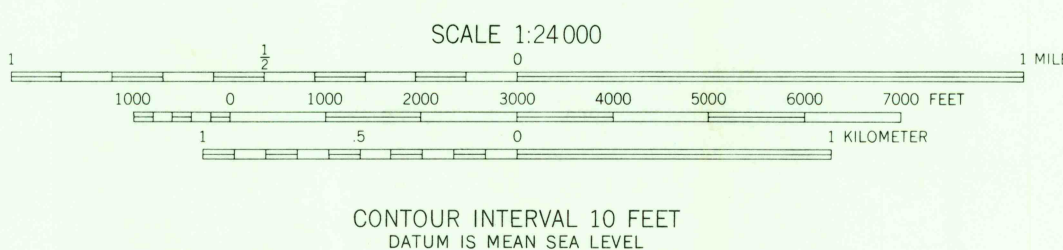
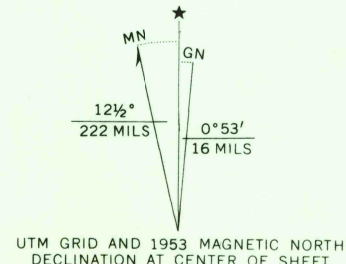


UNITED STATES  
DEPARTMENT OF THE INTERIOR  
GEOLOGICAL SURVEY

STOTTVILLE QUADRANGLE  
NEW YORK—COLUMBIA CO.  
7.5 MINUTE SERIES (TOPOGRAPHIC)  
SW/4 KINDERHOOK 15' QUADRANGLE



Mapped, edited, and published by the Geological Survey  
Control by USGS and USC&GS  
Topography from aerial photographs by Kelsh plotter  
Aerial photographs taken 1952. Field check 1953  
Polyconic projection. 1927 North American datum  
10,000-foot grid based on New York coordinate system,  
east zone  
1000-meter Universal Transverse Mercator grid ticks,  
zone 18, shown in blue



CONTOUR INTERVAL 10 FEET  
DATUM IS MEAN SEA LEVEL

THIS MAP COMPLIES WITH NATIONAL MAP ACCURACY STANDARDS  
FOR SALE BY U. S. GEOLOGICAL SURVEY, WASHINGTON, D. C. 20242  
A FOLDER DESCRIBING TOPOGRAPHIC MAPS AND SYMBOLS IS AVAILABLE ON REQUEST

ROAD CLASSIFICATION  
Heavy-duty 4 LANE 16 LANE Light-duty  
Medium-duty 4 LANE 16 LANE Unimproved dirt  
U.S. Route State Route



U.S.G.S.  
FILE COPY  
TOPOGRAPHIC DIVISION

STOTTVILLE, N.Y.  
SW/4 KINDERHOOK 15' QUADRANGLE  
N4215-W7337.5/7.5  
1953  
AMS 6268 1 SW—SERIES V821

USGS  
Historical File  
Topographic Division

2660  
MAY 26 1957