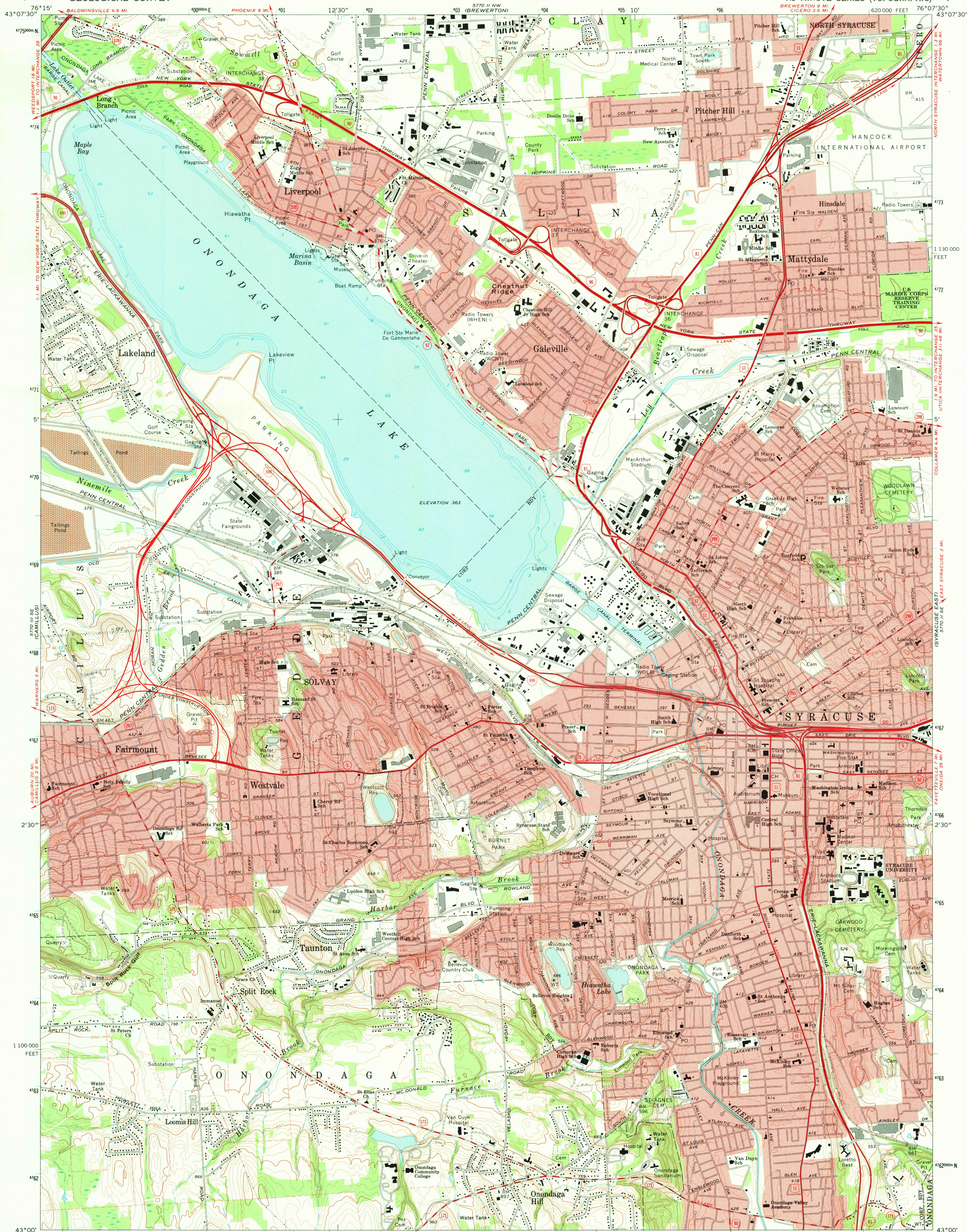


UNITED STATES  
DEPARTMENT OF THE INTERIOR  
GEOLOGICAL SURVEY

STATE OF NEW YORK  
DEPARTMENT OF TRANSPORTATION

SYRACUSE WEST QUADRANGLE  
NEW YORK—ONONDAGA CO.  
7.5 MINUTE SERIES (TOPOGRAPHIC)



Mapped, edited, and published by the Geological Survey  
Control by USGS and NOS/NOAA  
Topography by photogrammetric methods from aerial  
photographs taken 1972. Field checked 1973  
Supersedes map dated 1958  
Selected hydrographic data compiled from U. S. Lake Survey Chart  
180 (1969). This information is not intended for navigational purposes  
Projection and 10,000-foot grid ticks: New York coordinate  
system, central zone (transverse Mercator)  
1000-metre Universal Transverse Mercator grid ticks,  
zone 18, shown in blue. 1927 North American datum  
Fine red dashed lines indicate selected fence and field lines where  
generally visible on aerial photographs. This information is unchecked  
Red tint indicates areas in which only landmark buildings are shown



UTM GRID AND 1973 MAGNETIC NORTH  
DECLINATION AT CENTER OF SHEET

SCALE 1:24 000  
NATIONAL GEODETIC VERTICAL DATUM OF 1929  
DEPTH CURVES AND SOUNDINGS IN FEET—DATUM IS 363 FEET IN ONONDAGA LAKE  
CONTOUR INTERVAL 10 FEET  
1 000 000 FEET  
1 KILOMETRE



QUADRANGLE LOCATION

ROAD CLASSIFICATION  
Primary highway, hard surface  
Secondary highway, hard surface  
Light-duty road, hard or improved surface  
Unimproved road  
Interstate Route  
U. S. Route  
State Route

SYRACUSE WEST, N. Y.  
N4300-W7607.5/7.5

1973  
AMS 5770 II SW—SERIES B821