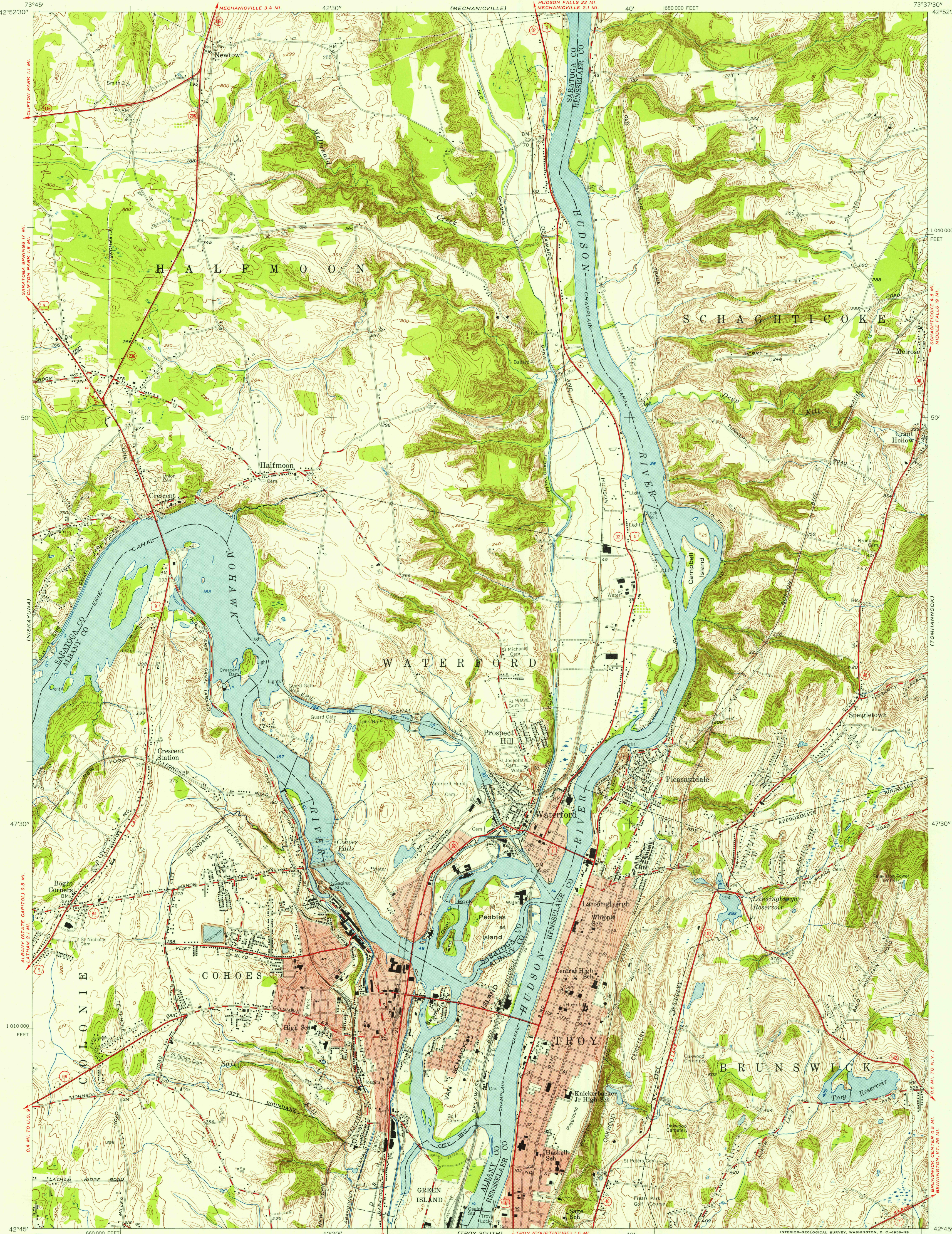


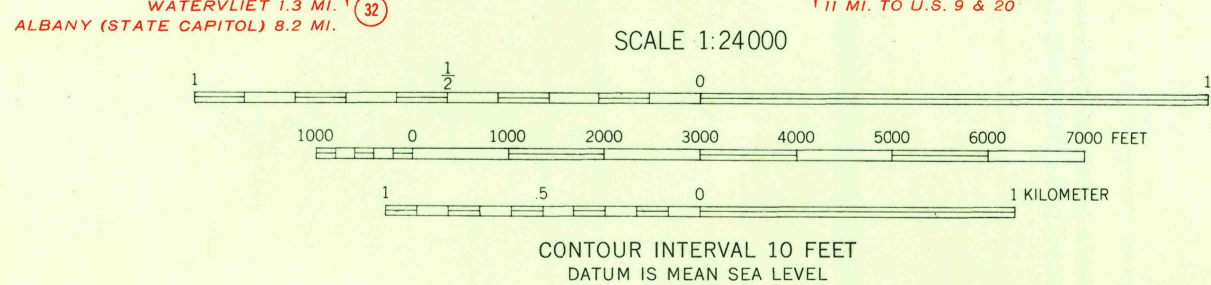
UNITED STATES
DEPARTMENT OF THE INTERIOR
GEOLOGICAL SURVEY

TROY NORTH QUADRANGLE
NEW YORK
7.5 MINUTE SERIES (TOPOGRAPHIC)
SW/4 COHOES 15' QUADRANGLE



U.S.G.S.
FILE COPY
TOPOGRAPHIC DIVISION

Mapped, edited, and published by the Geological Survey
Control by USGS and USCG&GS
Topography from aerial photographs by stereophotogrammetric
methods. Aerial photographs taken 1952. Field check 1954
Polyconic projection. 1927 North American datum
10,000-foot grid based on New York coordinate system,
east zone
Red tint indicates area in which only landmark buildings
are shown
Unchecked elevations are shown in brown



ROAD CLASSIFICATION
Heavy-duty ——— Light-duty ———
Medium-duty ——— Unimproved dirt ———
U. S. Route ——— State Route ———

TROY NORTH, N. Y.
SW/4 COHOES 15' QUADRANGLE
N 4245—W 7337.5/7.5

1954

U.S.G.S.
FILE COPY
TOPOGRAPHIC DIVISION

APR 11 1956

4195