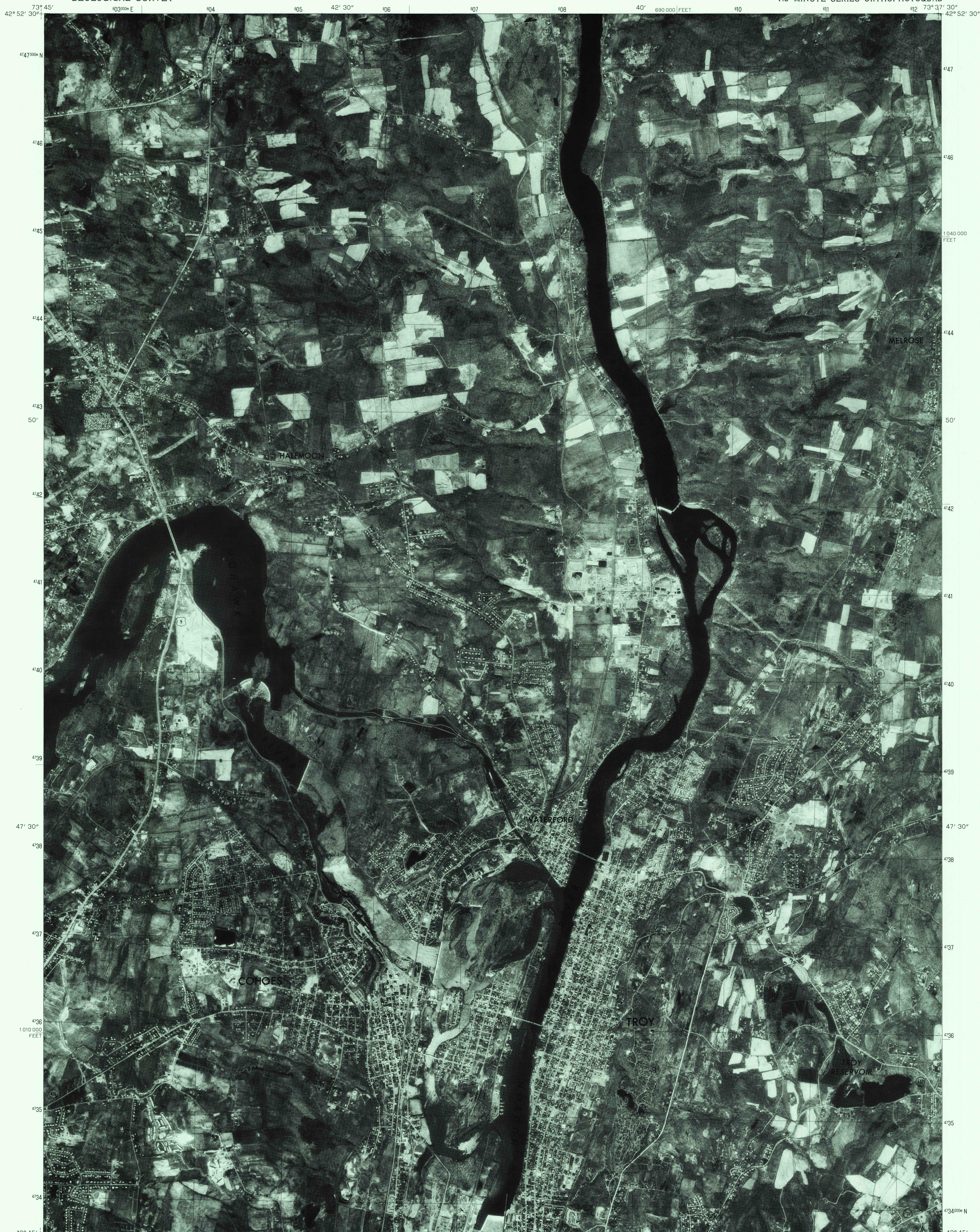
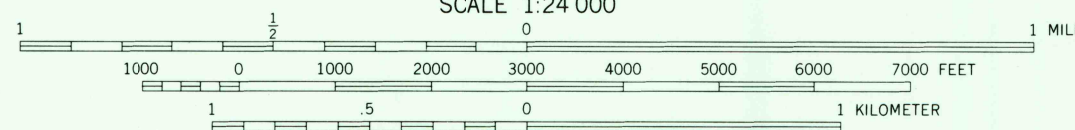
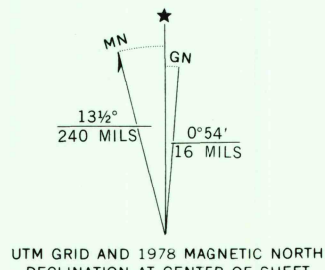


UNITED STATES
DEPARTMENT OF THE INTERIOR
GEOLOGICAL SURVEY

TROY NORTH QUADRANGLE
NEW YORK
7.5 MINUTE SERIES ORTHOPHOTOQUAD



Produced and published by the Geological Survey
in cooperation with the Soil Conservation Service
Orthophotograph prepared from 1:80,000-scale
aerial photograph taken May 11, 1978
Projection and 10,000-foot grid ticks: New York
coordinate system, east zone (transverse Mercator)
1000-meter Universal Transverse Mercator grid,
zone 18. 1927 North American Datum
To place on the predicted North American Datum 1983
move the projection lines 4 meters south and
35 meters west as shown by dashed corner ticks
Photomagey rectified by automatic correlation



PRINCIPAL NUMBERED HIGHWAYS
Interstate Route U. S. Route State Route

This quadrangle area also covered by
1:24,000-scale topographic map

TROY NORTH, N. Y.
N4245-W7337.5/7.5

1978

DMA 6269 1 SW-SERIES V021

JAN 10 1983
RETURN TO:
USGS AND HISTORICAL MAP ARCHIVES
300