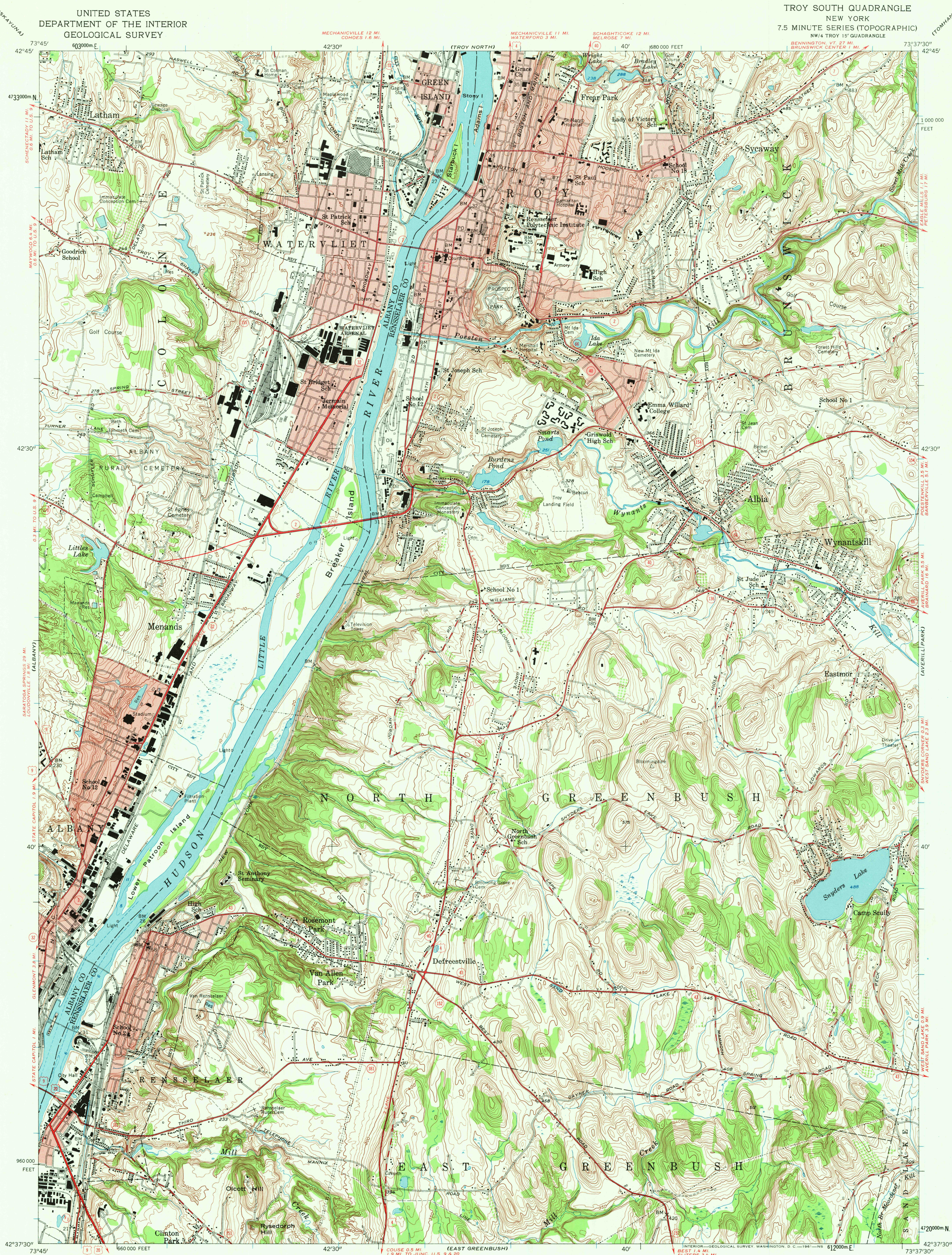
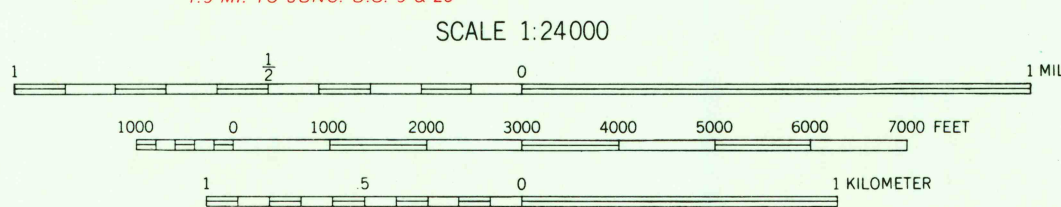


UNITED STATES
DEPARTMENT OF THE INTERIOR
GEOLOGICAL SURVEY

TROY SOUTH QUADRANGLE
NEW YORK
7.5 MINUTE SERIES (TOPOGRAPHIC)
NW 4 TROY 15' QUADRANGLE



Mapped, edited, and published by the Geological Survey
Control by USGS and USC&GS
Topography from aerial photographs by stereophotogrammetric methods. Aerial photographs taken 1952. Field check 1953
Hydrography from USC&GS chart 284, dated 1942
Polyconic projection. 1927 North American datum
10,000-foot grid based on New York coordinate system, east zone
Red tint indicates areas in which only landmark buildings are shown
Unchecked elevations are shown in brown
1000-meter Universal Transverse Mercator grid ticks, zone 18, shown in blue



ROAD CLASSIFICATION
Heavy-duty ——— Light-duty ———
Medium-duty ——— Unimproved dirt ———
U.S. Route ——— State Route ———
13 AUG 1973

TROY SOUTH, N. Y.
NW 4 TROY 15' QUADRANGLE
N 4237.5 — W 7337.5/7.5

1953

THIS MAP COMPLIES WITH NATIONAL MAP ACCURACY STANDARDS
FOR SALE BY U.S. GEOLOGICAL SURVEY, WASHINGTON 25, D. C.
A FOLDER DESCRIBING TOPOGRAPHIC MAPS AND SYMBOLS IS AVAILABLE ON REQUEST

T/0
5385