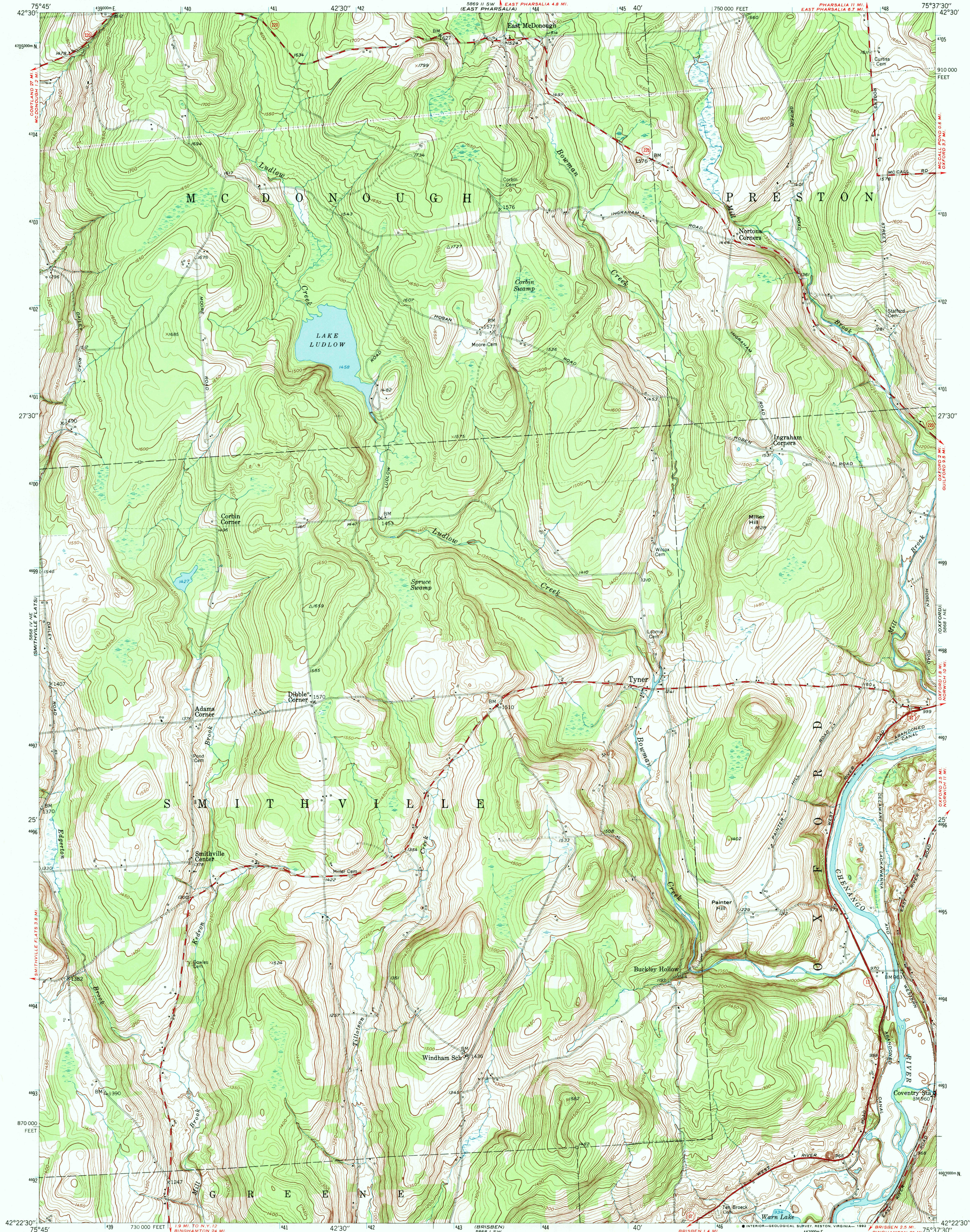


UNITED STATES
DEPARTMENT OF THE INTERIOR
GEOLOGICAL SURVEY

TYNER QUADRANGLE
NEW YORK-CHENANGO CO.
7.5 MINUTE SERIES (TOPOGRAPHIC)
NW/4 OXFORD 15' QUADRANGLE



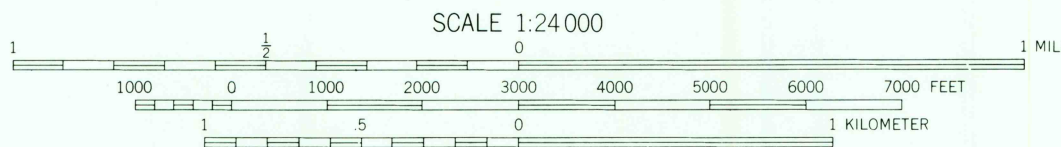
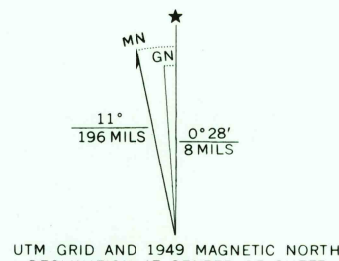
Mapped, edited, and published by the Geological Survey

Control by USGS and USC&GS
Topography from aerial photographs by multiplex methods
Aerial photographs taken 1944. Field check 1949

Polyconic projection. 1927 North American datum
10,000-foot grid based on New York coordinate system,
central zone

1000-meter Universal Transverse Mercator grid ticks,
zone 18, shown in blue

The difference between 1927 North American Datum and North
American Datum of 1983 (NAD 83) for 7.5-minute intersections
is given in USGS Bulletin 1875. The NAD 83 is shown by
dashed corner ticks



CONTOUR INTERVAL 10 FEET
NATIONAL GEODETIC VERTICAL DATUM OF 1929

THIS MAP COMPLIES WITH NATIONAL MAP ACCURACY STANDARDS
FOR SALE BY U.S. GEOLOGICAL SURVEY
DENVER, COLORADO 80225, OR RESTON, VIRGINIA 22092
A FOLDER DESCRIBING TOPOGRAPHIC MAPS AND SYMBOLS IS AVAILABLE ON REQUEST

Map photoinspected 1976
No major culture or drainage changes observed



ROAD CLASSIFICATION
Heavy-duty ——— Light-duty ———
Medium-duty ——— Unimproved dirt ———
State Route

TYNER, N. Y.
NW/4 OXFORD 15' QUADRANGLE
42075-D6-TF-024

1949
PHOTOINSPECTED 1976
DMA 5968 1 NW—SERIES V821

