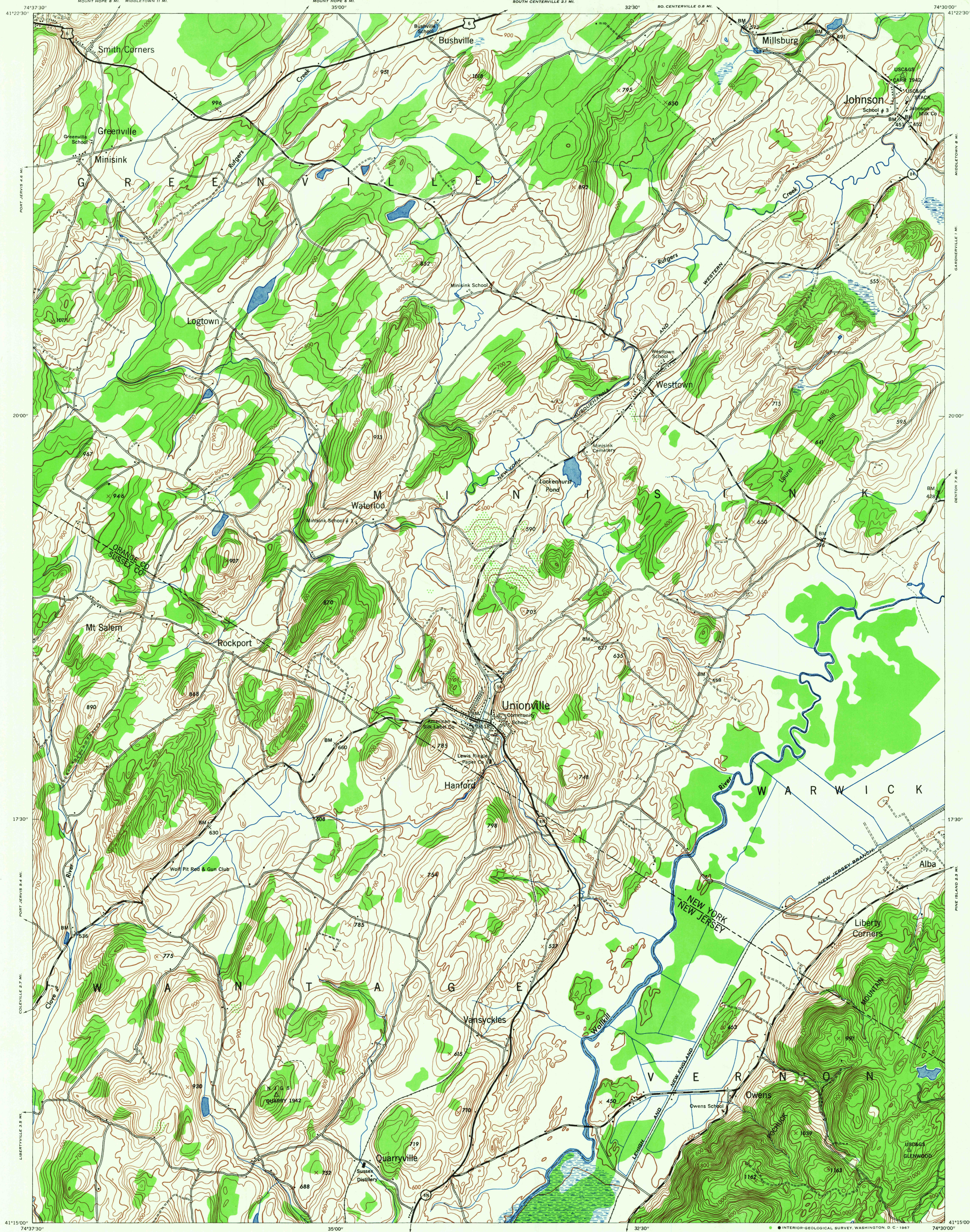


NEW YORK

UNIONVILLE



Prepared under the direction of the Chief of Engineers by the Army Map Service (AM), U. S. Army, Washington, D. C. Copied in 1946 from New York 1:31,680, AMS, Sheet 6065, 1 SE, 1943. Original map compiled from aerial photographs dated 1942 by stereophotogrammetric methods. Horizontal and vertical control by USCGS. Scale changed and marginal data revised, 1946. Aerial photography by Fairchild Aerial Surveys, 1942. This map complies with the national standard map accuracy requirements.

LEGEND

Hard surface, heavy duty road, more than two lanes wide	Loose surface, graded, dry-weather road
Hard surface, heavy duty road, two lanes wide; Federal route marker	Trail, dirt road
Secondary, hard surface, all-weather road, two lanes wide; State route marker	Railroad in street; Carline in street
RAILROADS	UNDER CONSTRUCTION
Standard gauge	Single track
Narrow gauge	Double track
Single track carline	ABANDONED
BOUNDARIES	Double track carline
International	Mine
State	Triangulation station
County (with monument)	Bench mark
County subdivision	Spot elevation
Reservation	Woods
Military reservation	Woods brushwood
School; Church	Brushwood
Cemetery	Orchard
Churchyard	Vineyard
	Intermittent lake
	Intermittent stream
	Dam
	Rapids; Falls
	Large rapids and falls
	Swamp, marsh
	Rocks, awash at low tide
	Wharf, pier
	Man-made shoreline

CONTOUR INTERVAL 20 FEET  
DATUM IS MEAN SEA LEVEL  
POLYCONIC PROJECTION  
1927 NORTH AMERICAN DATUM

REPRINTED FROM MILITARY EDITION FOR CIVIL USE  
FOR SALE BY U. S. GEOLOGICAL SURVEY, WASHINGTON, D. C. 20242  
A FOLDER DESCRIBING TOPOGRAPHIC MAPS AND SYMBOLS IS AVAILABLE ON REQUEST

USGS  
Historical File  
Topographic Division

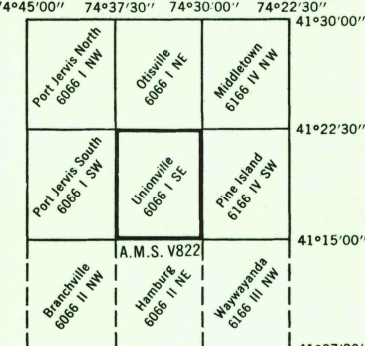
TRUE NORTH  
MAGNETIC NORTH  
APPROXIMATE MEAN DECLINATION, 1949

INDEX TO BOUNDARIES



New York  
1. Orange County  
2. Warren County  
3. Minerva  
4. Warren County  
5. Warren County  
6. Warren County

INDEX TO ADJOINING SHEETS



New York  
1. Orange County  
2. Warren County  
3. Minerva  
4. Warren County  
5. Warren County  
6. Warren County

U.S.G.S.  
FILE COPY  
TOPOGRAPHIC DIVISION

UNIONVILLE, N.Y., N.J.  
N4115-W7430/7.5

6090  
JUN 27 1957