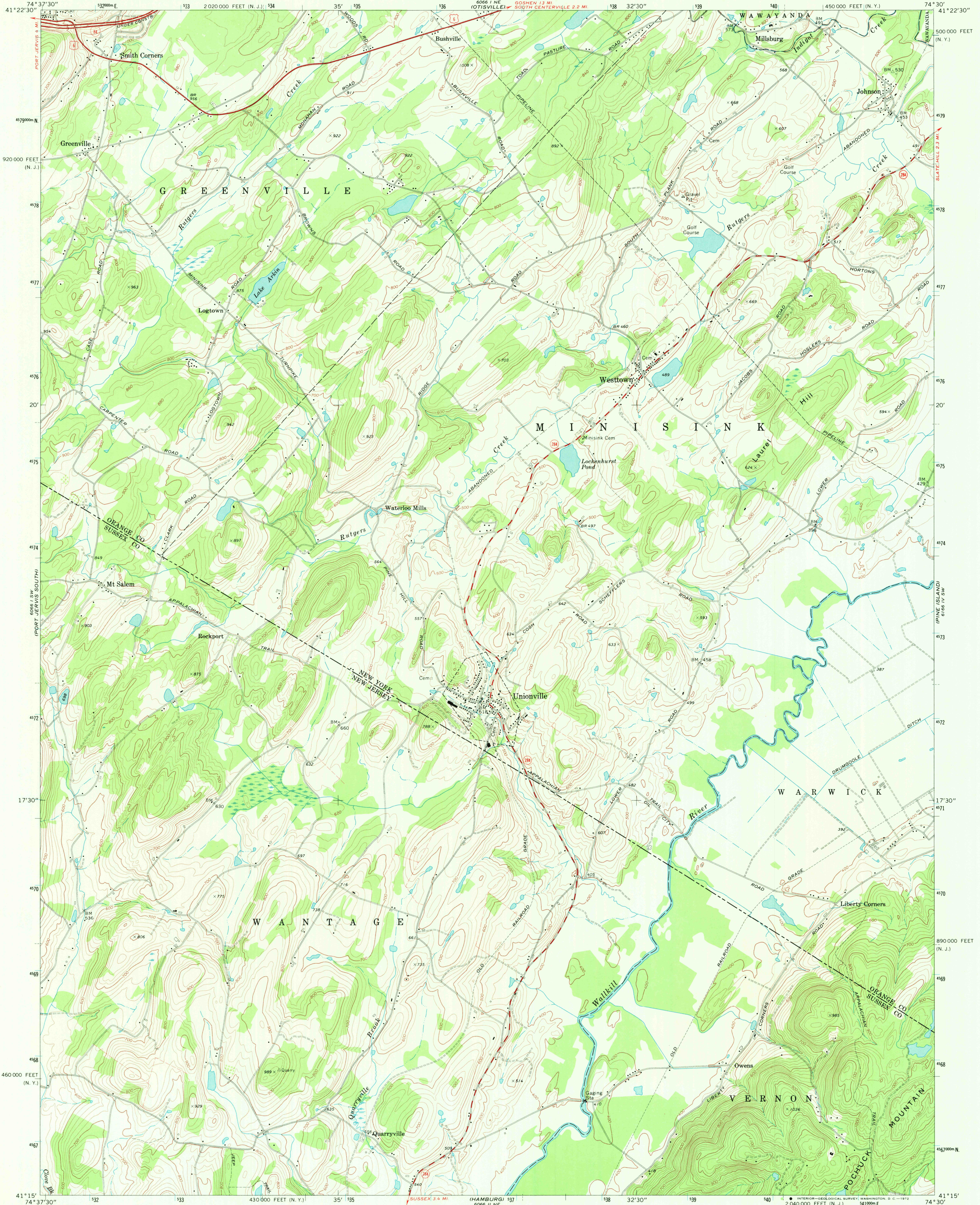


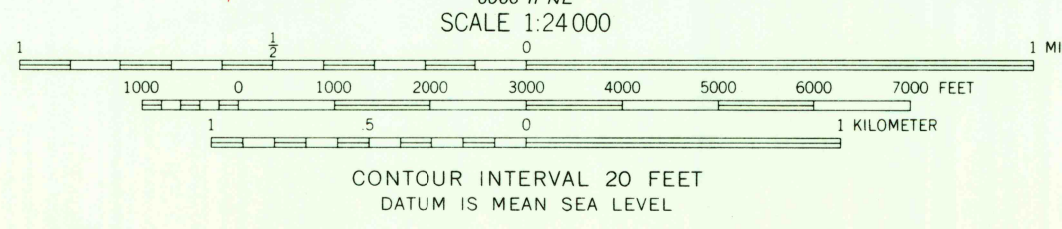
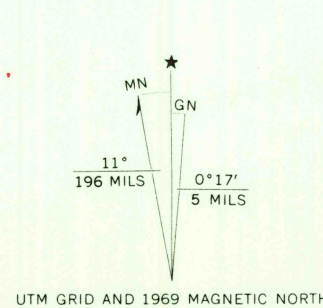
UNITED STATES  
DEPARTMENT OF THE INTERIOR  
GEOLOGICAL SURVEY

STATE OF NEW YORK  
DEPARTMENT OF TRANSPORTATION

UNIONVILLE QUADRANGLE  
NEW YORK-NEW JERSEY  
7.5 MINUTE SERIES (TOPOGRAPHIC)



Mapped, edited, and published by the Geological Survey  
Control by USGS and USC&GS  
Topography by photogrammetric methods from aerial  
photographs taken 1963. Field checked 1969  
Supersedes Army Map Service map dated 1943  
Polyconic projection. 1927 North American datum  
10,000-foot grids based on New York coordinate system,  
east zone, and New Jersey coordinate system  
1000-meter Universal Transverse Mercator grid ticks,  
zone 18, shown in blue  
Fine red dashed lines indicate selected fence and field lines where  
generally visible on aerial photographs. This information is unchecked



ROAD CLASSIFICATION  
Primary highway, hard surface  
Secondary highway, hard surface  
Light-duty road, hard or improved surface  
Unimproved road  
Interstate Route  
U. S. Route  
State Route

UNIONVILLE, N. Y. - N. J.  
N4115-W7430/7.5

1969  
AMS 6066 I SE-SERIES V821

USGS  
HISTORICAL FILE  
TOPOGRAPHIC DIVISION